



**Ventura Publisher  
Windows Edition 4.1**

---

**Installation & Configuration Guide**

---

# **VENTURA PUBLISHER Installation and Configuration Guide**

**Windows Edition 4.1**

Copyright protection claimed includes all forms and matters of copyrightable material and information now allowed by statutory or judicial law or hereinafter granted, including without limitation, material generated from the software programs which are displayed on the screen such as icons, screen display looks, etc.

Reproduction or disassembly of embedded computer programs or algorithms prohibited.

HP LaserJet™, LaserJet™ Plus, LaserJet Series II, LaserJet Series III, DeskJet™, PaintJet™, and Hewlett-Packard® are trademarks of Hewlett-Packard Corp.

IBM®, AT, XT, Proprinter®, Displaywrite®, and Personal System/2 are trademarks of International Business Machines Corp.

LaserWriter™ is a trademark of Apple Computer.

Linotype™ and Linotronic™ are trademarks of Allied Corp.

Microsoft®, Microsoft® Word, and Microsoft Windows™ are registered trademarks of Microsoft Corp.

PostScript™ and Sonata are trademarks of Adobe Systems Inc.

QMS® and Colorsript™ are registered trademarks of QMS, Inc.

Glypha, Helvetica, Melior, Optima, Palatino, Times, and Trump are registered trademarks of Allied Corporation.

ITC American Typewriter, ITC Avant Garde Gothic, ITC Benguiat, ITC Bookman, ITC Galliard, ITC Garamond, ITC Korinna, ITC Lubalin Graph, ITC Machine, ITC New Baskerville, ITC Souvenir, ITC Zapf Chancery, and ITC Zapf Dingbats are registered trademarks of International Typeface Corporation.

Copyright © Ventura Software, Inc. 1986 — 1992. All rights reserved.

All other product names or trademarks are property of their respective owners.

This manual was produced and printed using Ventura Publisher.

Information in this manual is subject to change without notice and does not represent a commitment on the part of the vendor. The software described in this manual is furnished under a license agreement and may be used or copied only in accordance with the terms of the agreement.

## **Documentation**

Kevin Keniston

## **Special Thanks**

Barbara Gill

This Installation and Configuration Guide is divided into four parts:

**System Requirements and Pre-Installation.** This section describes the hardware and software requirements required to run Ventura Publisher. This section also describes pre-installation considerations that need to be taken into account depending on your system configuration.

**Installation.** This section describes the steps necessary to install Ventura Publisher and its components onto your system.



It is very important that you read through the installation procedures carefully both *before* and *during* the installation process.

---

**Configuration.** This section describes how to register network seats using the SERNSTAL application, and how to customize the button bar using the button bar editor application.

**Utilities.** This section describes how to use the utility programs included with Ventura Publisher.

---

# System Requirements and Pre-Installation

This section describes the hardware and software requirements required to run Ventura Publisher.

This section also describes pre-installation considerations that need to be taken into account depending on your system configuration.

---

## Basic system requirements

---

Ventura Publisher for Windows requires an 80286, 80386, or 80486 IBM AT, PS/2, or compatible computer. Your computer must also contain the following or equivalent:

- **Minimum of 4 megabytes of RAM.** All RAM above the first megabyte *must* be configured as **extended** memory. It is recommended that 6 to 8MB (or more) system memory be installed for increased performance.



Device drivers, TSR (terminate and stay resident) programs, and print and disk caching programs loaded before Windows is run subtract from the total memory available to Windows and Ventura Publisher. Printer and disk caches may also allow you to specify an amount of memory to reserve for the cache. If you have device drivers, disk or print caches, or TSR programs loaded before Windows is run, sufficient memory for running Ventura Publisher may not be available. In this case you must decrease the memory used by the print or disk cache, remove the device drivers or TSR programs from memory before running Windows, or add additional system memory.

- 
- **DOS 3.3 or higher.**
  - **Microsoft Windows version 3.0 or higher** must be installed prior to installing Ventura Publisher. Windows version 3.1 or higher is recommended.
  - **A hard disk drive** with at least 5 megabytes of available hard disk space (after Windows is installed) for the minimal installation of the program file. A minimum of 6MB additional disk space should be available for temporary disk space (refer to the AUTOEXEC.BAT entry section below). Additional hard disk space is required as follows:
    - Example chapters, 500K bytes
    - Ventura Scan, 650K bytes
    - Ventura Separator, 400K bytes
    - Design Gallery (all categories), 3200K bytes



The capabilities of your display and printer, and the fonts available to Ventura Publisher depend entirely on the capabilities you have installed for Windows.

---

---

## AUTOEXEC.BAT and CONFIG.SYS entries

---

The following paragraphs describe the minimum entries that should appear in your AUTOEXEC.BAT and CONFIG.SYS files.

**AUTOEXEC.BAT** A temporary files storage location must be referenced in your AUTOEXEC.BAT file as follows:

```
SET TEMP=[drive:\path]
```

where [drive:\path] is replaced with the drive and complete path where you wish Windows to store the temporary files it creates (do not include the braces in your AUTOEXEC.BAT). The drive must be a valid drive with at least 6MB of available disk space, and the directory referenced must be an existing directory.



The drive referenced in the SET TEMP entry should not be a floppy drive or other removable media. Additionally, the directory referenced in the SET TEMP entry should not be the root directory of a hard drive (e.g., C:\).

Do not enter any spaces in the entry other than the space between SET and TEMP.

---

**CONFIG.SYS** The following values are recommended for the corresponding CONFIG.SYS entries.

```
BUFFERS=10 (If you have a disk cache such as SMARTDrive installed.)
```

*or*

```
BUFFERS=30 (If you don't have a disk cache program installed.)
```

```
FILES=40
```

```
DEVICE=[drive:\path]\SMARTDRV.SYS 1024 512
```

where [drive:\path] is replaced with the drive and complete path corresponding to the location of the SMARTDRV.SYS file (do not include the braces in your CONFIG.SYS).



If you use a disk caching utility other than SMARTDrive, replace [drive:\path]\SMARTDRV.SYS 1024 512 with the location and parameters for your specific disk caching utility.

---

## Network system requirements

---

### Stand-alone system accessing the network

---

In addition to the requirements listed previously, stand-alone systems accessing the network must also meet the following requirements:

- In order for the stand-alone system to access a non-Novell network using Ventura Publisher, full NetBIOS must be installed on the stand-alone system.
- Ventura Publisher does not require stand-alone systems accessing the network to be included in the registered workstation count (refer to the Workstation Registration section starting on page 17 for information on workstation registration). However, Ventura Publisher will check the serial number of all copies of the application accessing the network to ensure that no two copies of the application having the same serial number can be run.

### Network server and workstation requirements

---

In addition to the requirements listed previously, the network server and all workstations running Ventura Publisher Windows Edition from the server must meet the following requirements:

- On non-Novell networks, full NetBIOS must be installed on the server and all workstations running Ventura Publisher from the server.
- A separate Network Node Kit or full version of Ventura Publisher must be purchased for each workstation running Ventura Publisher from the server.
- The number of workstation users concurrently running Ventura Publisher from the server must be equal to, or less than the number of workstations registered in the registered workstation count (refer to the Workstation Registration section starting on page 17 for information on workstation registration).



---

## Pre-installation

---

### Backing-up the program floppy disks

---

Before you perform any installation procedures you should backup the original Ventura Publisher program floppy disks and use the backup copies for installation. This can be done using the Windows File Manager **Copy Diskette** option.

### Disabling DOS SHARE

---

If you are running the DOS SHARE program, you should disable it before installing Ventura Publisher. Share can be temporarily disabled as follows:

- Exit from Windows.
- Locate and rename SHARE.EXE to SHARE.BAK.
- Reboot your computer.
- Start Windows and perform the installation as described in this guide.
- After the installation is complete, exit from Windows, rename SHARE.BAK to SHARE.EXE, and reboot your computer.

### Installation of different Ventura Publisher Editions on the same drive

---

Each Ventura Publisher Edition is designed to coexist in the same VENTURA directory on a single drive. However, it is recommended that each Ventura Publisher Edition be installed on separate drives.

Installing different Ventura Publisher Editions on the same drive will make it difficult to isolate the program files for any specific Ventura Publisher Edition should you wish to delete them at a later time. Additionally, deleting the INF file for any Ventura Publisher Edition will cause that version to attempt to load the DEFAULT style sheet located in the TYPESET directory. If the DEFAULT style sheet is from a 4.0 or above version of Ventura Publisher, and you have deleted the INF file for a previous version (e.g., version 3.0) the previous version of Ventura Publisher will attempt to

---

load the later version format DEFAULT style sheet resulting in system hang-up.

If you install the example files from the Ventura Publisher Windows Edition 4.1 in the TYPESET directory, and example files from a different Ventura Publisher Edition are already installed in the TYPESET directory, the older files will be overwritten. The example files from Ventura Publisher 4.0 and above cannot be opened by a previous version of Ventura Publisher.

### Creating a SUBST drive for Ventura Publisher

If you do not have another drive available, you can create one using the DOS substitute (SUBST) command. This command will allow you to treat a subdirectory on your drive as another drive. To create a SUBST drive for Ventura Publisher:



The DOS substitute command should not be used on network systems.

---

- Ensure that the DOS file SUBST.EXE has been copied to your hard drive. This file can typically be found in the same location as your other DOS program files (e.g., the DOS directory).
- Create a directory on your hard disk called VPWIN41. To do this, first change to a drive that has at least 6MB of free space available. Then, at the DOS prompt enter:

```
MD \VPWIN41
```

- Using an ASCII text editor (Windows Notepad, Sysedit, etc.), enter the following line in your AUTOEXEC.BAT file

```
[drive1:\path]\SUBST [newdrive]: [drive2]:\VPWIN41
```

where [drive1:\path] is replaced with the complete drive and path location of the SUBST.EXE file. [newdrive] is replaced with the letter of the drive you are creating (typically the letter after the letter of your last drive. [drive2] is replaced with the letter of the drive on which the VPWIN41 directory was created.



Do not replace [newdrive] with the drive letter of an existing drive.

---

For example:

```
C:\DOS\SUBST E: D:\VPWIN41
```

In this example, SUBST.EXE is located in the DOS directory of drive C. The VPWIN41 directory, created on drive D, would be seen by DOS and

Windows as drive E. Additionally, any subdirectories in the VPWIN41 directory would be seen by DOS and Windows and subdirectories of drive E.

- Save the AUTOEXEC.BAT file and exit from the ASCII text editor program.
- If you are in Windows, exit from Windows.
- Reboot your computer for the changes to take affect.

During the Ventura Publisher installation process, you would simply select the drive created by SUBST (drive E in our example) as the drive on which to install Ventura Publisher Windows Edition. In this way, your previous version of Ventura Publisher would still be located in the \VENTURA directory. The Windows Edition would *appear* to DOS and Windows as being installed in the \VENTURA directory of the SUBST drive, but would actually be installed in a \VPWIN41\VENTURA directory.

## Upgrading from earlier versions

---

### Upgrading from DOS/GEM or OS/2 Editions

Ventura Publisher Windows Edition 4.1 can be installed in a VENTURA directory containing Ventura Publisher DOS/GEM and/or OS/2 Edition program files. If you intend to install Ventura Publisher Windows Edition in a directory containing other editions of Ventura Publisher, refer to the section on installing multiple editions on the same drive, starting on page 6, before installing Ventura Publisher Windows Edition 4.1.

If you no longer want to use the older DOS/GEM or OS/2 version, you should delete all of the program files in the \VENTURA directory and sub-directories prior to installing the Windows version of Ventura Publisher.



Do not delete any chapter data files in the VENTURA directory. The Ventura Publisher program files can be identified by the file extension. Refer to the *Reference Guide* for the edition you plan to delete for a listing of the program file and chapter data file extensions.

---

If you install the example files from the Ventura Publisher Windows Edition 4.1, these files will be installed in the TYPESET directory on the same drive on which the program files have been installed. If example files from a Ventura Publisher DOS/GEM or OS/2 Edition are already installed in the TYPESET directory, they will be overwritten. The example files from

---

Ventura Publisher Windows Edition 4.1 cannot be opened by Ventura Publisher DOS/GEM or OS/2 Editions.

Attempting to load the Ventura Publisher Windows Edition 4.1 example files in a DOS/GEM or OS/2 Edition of Ventura Publisher will cause unpredictable and undesirable results (e.g., system hang-up). If you have installed the example chapters from the Ventura Publisher DOS/GEM or OS/2 Editions, and wish to keep these files, you should multi-chapter the example files to another directory before installing Ventura Publisher Windows Edition 4.1 example files.

**Upgrading from a previous version of Windows Edition** If an older Windows version is already installed, this installation will overwrite the older application and application support files only. If you have stored chapter files in the VENTURA directory, this installation will not delete or modify these files in any way.

If the installation program locates a personal spelling dictionary file in the directory set as the preferences location, or a VPWIN.INI file in the user's Windows directory, the installation program will not overwrite them.

If you are upgrading from Ventura Publisher Windows Edition 4.0, you should make a backup of the user font index file (USER.WFT) found in the VENTURA directory in which the 4.0 program files are installed.

This section describes steps necessary to install Ventura Publisher and its components onto your system.

It is important that you read through the System Requirements and Pre-installation section starting on page 2 before installing Ventura Publisher Windows Edition 4.1.



After you have completed your installation, please start Ventura Publisher and refer to page 5-23 of the *Reference Guide* for information regarding renaming of the ENVIRON.WID width table file.

---

---

## Installing the program

---

The Ventura Publisher setup application allows you to install all of the components of Ventura Publisher 4.1, individual components, or install for a network workstation.



If you are upgrading or re-installing a network server installation of Ventura Publisher, ensure that all network users have exited from Ventura Publisher and that none are in the VENTURA directory.

If this is a first time installation of Ventura Publisher Windows Edition 4.1, you will be required to start the setup application from the Ventura Publisher APPLICATION floppy disk.

If Ventura Publisher Windows Edition 4.1 has previously been installed on your system, or on a system accessible via a network, the setup application can be run from the VENTURA directory containing the 4.1 program files.

To install Ventura Publisher Windows Edition 4.1

- Insert the Ventura Publisher APPLICATIONS disk in the appropriate floppy disk drive.
- With Windows 3.0 or above running, select the **Run** option from the Program Manager **File** menu.
- If you are running the setup application from the APPLICATION program disk, enter the following in the **Command Line** entry field.

```
[drive]:\SETUP
```

where [drive] is replaced with the letter of the floppy drive containing the APPLICATION program disk.

If you are running the setup application from the VENTURA directory containing previously installed 4.1 program files, enter the following in the **Command Line** entry field.

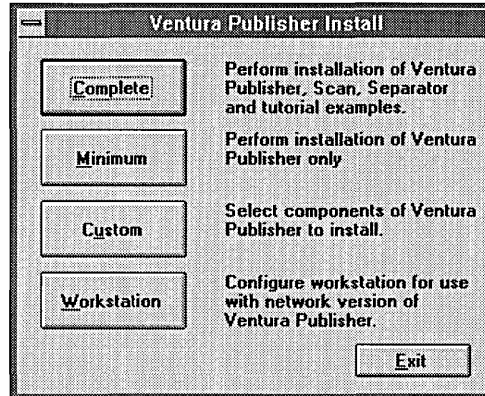
```
[drive]:\SETUP2
```

where [drive] is replaced with the letter of the hard drive containing the VENTURA directory on which Ventura Publisher Windows Edition 4.1 program files have been installed.



If Ventura Publisher Windows Edition has previously been installed on your system, open the Ventura Publisher group window. If a setup application icon is present in the window, you can double-click on this icon to start the setup application.

- When the Ventura Publisher setup application starts, the Ventura Publisher Install dialog box is displayed.



- Click on the desired installation option button. The following pages describe the components installed, and the option settings associated with each installation option.
- After the desired installation options have been selected, click on the **Continue** button to begin installing the selected components. Insert the required disks when prompted by the setup application.



The number of disks required for the installation is dependent on the installation option selected. You may not be required to use all of the program disks during the installation process.

## Complete

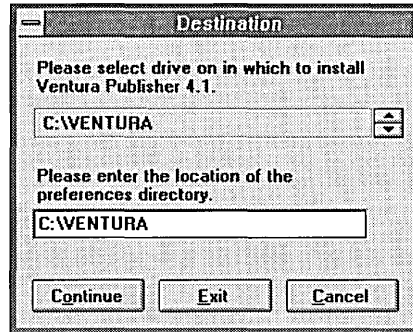
The **Complete** installation option will install the Ventura Publisher application files, the Ventura Scan and Ventura Separator application files, and the example chapters.



The Design Gallery chapters will not be installed using the **Complete** installation option. To install Design Gallery chapters, use the **Custom** installation option.

---

When the **Complete** installation option is selected, the Destination dialog box is displayed.



- Use the drive select buttons to select the drive on which Ventura Publisher is to be installed. Ventura Separator and Ventura Scan will be installed in the VENTURA directory on the selected drive. The example chapters will be installed in the TYPESET directory on the selected drive.



The dialog box will display the amount of disk space required to install the program files as well as the amount of disk space available on the selected drive. If the required disk space is greater than the available disk space, an alert box will be displayed when the setup application exhausts the available disk space. However, if you are installing over a previous installation of Ventura Publisher Windows Edition, the amount of disk space used by these files is not added to the available space shown. In this situation, there may be sufficient space available for the installation even though the space required is greater than the available disk space shown.

---

- Enter the complete drive and path for the preferences location. This is the directory in which the personal spelling dictionary (SPLDICT.PD) and the personal configuration file (VPWIN.INF) is stored. If the directory specified does not exist, it will be created.

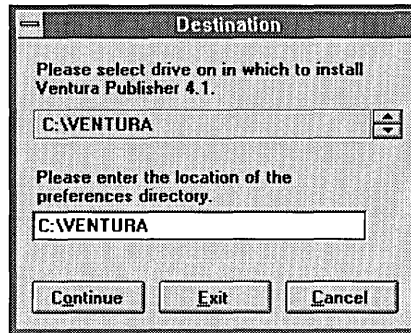


---

## Minimum

---

The **Minimum** install option will install only the Ventura Publisher application files. When the **Minimum** installation option is selected, the Destination dialog box is displayed.



- Use the drive select buttons to select the network server drive on which Ventura Publisher is installed.



The dialog box will display the amount of disk space required to install the program files as well as the amount of disk space available on the selected drive. If the required disk space is greater than the available disk space, an alert box will be displayed when the setup application exhausts the available disk space. However, if you are installing over a previous installation of Ventura Publisher Windows Edition, the amount of disk space used by these files is not added to the available space shown. In this situation, there may be sufficient space available for the installation even though the space required is greater than the available disk space shown.

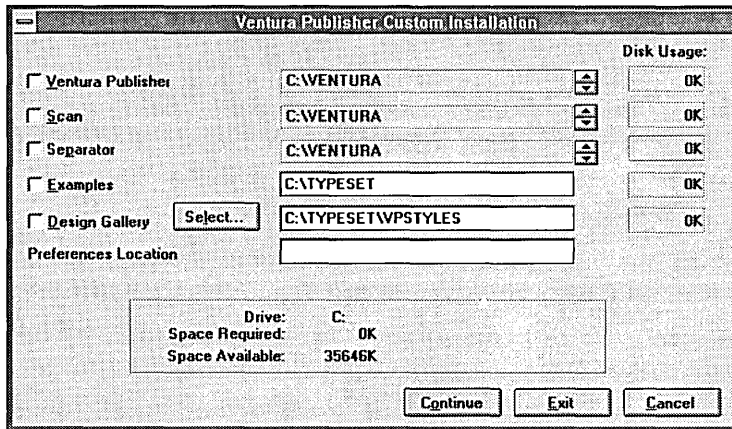
- Enter the complete drive and path for the preferences location. This is the directory in which the personal spelling dictionary (SPLDICT.PD) and the personal configuration file (VPWIN.INF) is stored. If the directory specified does not exist, it will be created.

---

## Custom

---

The **Custom** installation option allows you to specify the components you wish to installed. When the **Custom** installation option is selected, the Ventura Publisher Custom Installation dialog box is displayed.



The disk space required for each component selected for installation will be displayed next to the destination entry field for the selected component. Additionally, the total space required and space available for each drive selected as a destination drive (as set in the destination entry fields) will be displayed at the bottom of the screen.



If the required disk space is greater than the available disk space, an alert box will be displayed when the setup application exhausts the available disk space. However, if you are installing the Ventura Publisher components over previous installations of the components, the amount of disk space used by these components is not added to the available space shown. In this situation, there may be sufficient space available for the installation even though the space required is greater than the available disk space shown.

➤ Check the check boxes for the components you wish to install.

### Ventura Publisher

➤ If the **Ventura Publisher** component check box is checked, use the drive selection buttons next to the **Ventura Publisher** destination field to select the drive on which Ventura Publisher is to be installed. Only the destination drive can be modified. The destination directory must be VENTURA, and cannot be modified.

➤ If desired, modify the **Preferences Location** entry field to store the personal dictionary file (SPLDICT.PD) and the personal configuration file (VPWIN.INF) on a drive or in a directory other than the VENTURA directory in which the Ventura Publisher application files are to be installed. If the directory specified does not exist, it will be created.

---

**Ventura Scan/Ventura Separator**

If either or both the **Ventura Scan** and **Ventura Separator** component check boxes are checked, the destination fields for these options will automatically be set to that of the Ventura Publisher destination field if the Ventura Publisher component check box is checked. The drive selection button for the Ventura Scan and Ventura Separator components will be inactive.

---



If Ventura Publisher Windows Edition 4.1 is not already installed, you must check the **Ventura Publisher** component check box when installing the **Ventura Scan** and **Ventura Separator** components. Ventura Scan and Ventura Separator must be installed in the same directory in which the Ventura Publisher Windows Edition 4.1 application files are installed.

---

If the **Ventura Publisher** component check box is cleared, the drive selection buttons for the **Ventura Scan** and **Ventura Separator** components will be active if the corresponding check box is checked. Use the drive selection buttons to select the destination drive for the component. If both check boxes are checked, changing the destination drive for one of the components will change the destination drive for the other.

**Examples**

If the **Examples** component check box is checked, modify the destination drive and path if desired.

**Design Gallery**

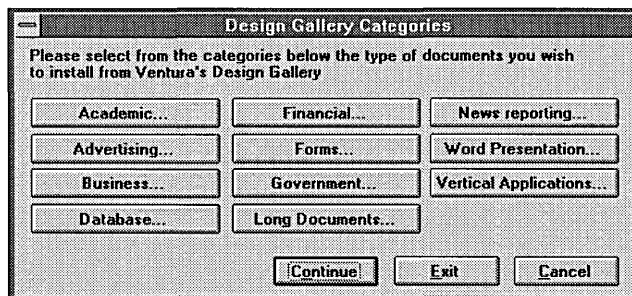
To specify Design Gallery categories or documents for installation, click on the **Select** button. When you click on the **Select** button, the Design Gallery Categories dialog box is displayed.

---



Simply checking the Design Gallery check box will not select any of the Design Gallery documents for installation. You must click on the **Select** button and the desired category button to select the documents for installation.

---



The dialog box displays buttons for each of the Design Gallery *categories* available. Each of the Design Gallery categories contain a number of in-

---

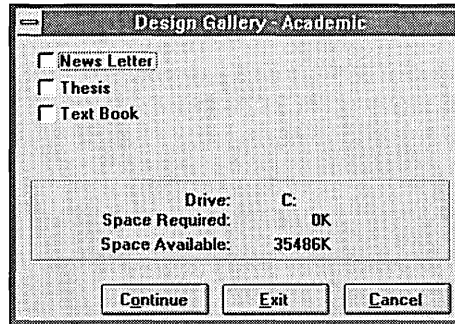
dividual documents. Clicking on any of the Design Gallery category buttons displays a dialog box similar to the following.

---



By default, the document check boxes for each of the categories is cleared. To install a document for any category, you must select the category button and check the check box for all documents you want to install.

---



This dialog box allows you to select individual Design Gallery documents for installation. When a check box for a document is cleared, that document will not be installed.

- Check or clear the document check boxes as desired.
- Click on the **Continue** button to accept your choices and return to the Design Gallery Category dialog box.
- Select other Design Gallery categories and documents in the same manner.
- When you are satisfied with your Design Gallery selections, click on the **Continue** button in the Design Gallery dialog box to return to the Ventura Publisher Custom Installation dialog box.

## Workstation

---

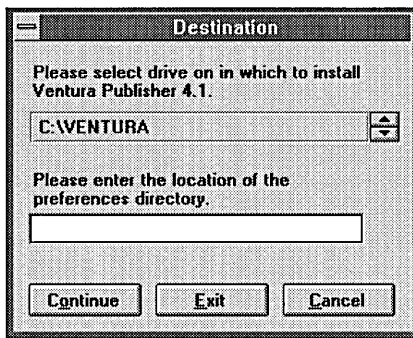
The **Workstation** installation option will not install any program files. This option is used to install a Ventura Publisher icon, and set the preferences location for workstations running Ventura Publisher from the network server.



Ventura Publisher must already be installed on the network server system before installing for a workstation.

---

When the **Workstation** installation option is selected, the Destination dialog box is displayed.



- Use the drive select buttons to select the network server drive on which Ventura Publisher is installed.
- Enter the complete drive and path for the preferences location. This is the directory in which the personal spelling dictionary (SPLDICT.PD) and the personal configuration file (VPWIN.INF) is stored. The preferences directory should *not* be the VENTURA directory. The preferences directory should be a unique directory for each workstation user (e.g., the user's HOME directory). If the directory specified does not exist, it will be created.

This section describes how to use the SERNSTAL application to register network workstations so that they can run Ventura Publisher from the program files installed on the network server.

This section also describes how to use the button bar editor application to customize the Ventura Publisher button bar.

---

## Registering workstations

---

In order for multiple workstations to run Ventura Publisher from the program files installed on the server, you must register the workstations by installing additional Ventura Publisher nodes. Ventura Publisher must be installed on the server prior to installing the nodes.



If you are upgrading from a previous version of Ventura Publisher for which you have registered network seats, you must also obtain and install Network Node Kit upgrades.

---

The original Ventura Publisher APPLICATION disk used to install Ventura Publisher on the server contains a single node that can be registered. Additional nodes can be added by purchasing Network Node Kits or complete Ventura Publisher software packages.

---



The installation of nodes can be performed from any workstation having complete access rights to the VENTURA directory.

---

Installing additional nodes permits multiple users to run Ventura Publisher from a single copy installed on the server. Installing an additional node increments the number of users able to run Ventura Publisher from the copy installed on the server, but does not assign that node to any particular workstation. If you have a total of five nodes installed on the network, a maximum of five users can run Ventura Publisher installed on the server from any five workstations having access to the program.

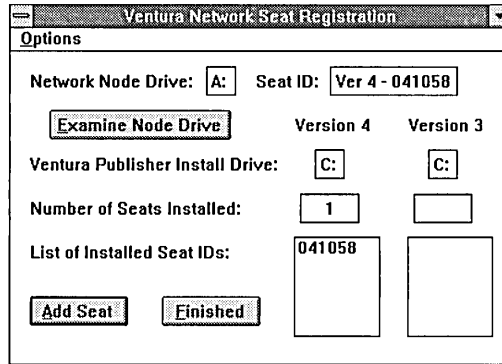
To install additional nodes:

- Purchase a separate Network Node Kit for each node that is to have access to Ventura Publisher on the network.
- With Windows version 3.0 or above running, insert the UTILITIES disk into appropriate floppy disk drive.
- Select the **File** menu from the Program Manager **File** menu.
- In the **Command Line** entry field, type:

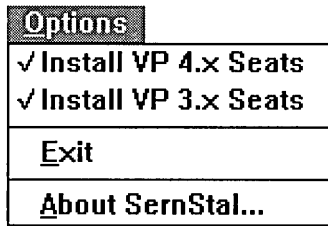
```
[drive]:\UTILITY\SERNSTAL
```

where [drive] is replaced with the letter of the floppy disk drive containing the UTILITIES disk.

- Press the **Enter** key or click on the **OK** button. The Ventura Network Seat Registration dialog box appears.



- If you intend to install Version 3.0 Network Node Kits, you will need to enable the version 3.0 installation function. This can be done by selecting the **Install VP 3.x Seats** option from the **Options** menu as shown below. A check mark next to the option means that the installation option is enabled. If you are installing Network Nodes Kits for only one version, it is recommended that you disable the install option for the other version.



- Insert the Network Node Kit disk in the appropriate floppy drive. Remove the Ventura Publisher Utilities disk if necessary.



The Ventura Publisher Application disk contains a network node serial number that may be registered.

- In the **Network Node Drive** entry field, enter the floppy drive letter in which the Network Node Kit disk is inserted.
- In the **Ventura Publisher Install Drive** entry field for the appropriate version, enter the network drive letter on which that version of Ventura Publisher is installed.
- If you are installing several Network Node Kits, you may wish to view the serial number on the floppy disk currently in the disk drive to ensure



---

it contains a valid serial number and is not a duplicate of one already registered. To view a serial number on the floppy disk, click on the **Examine Node Disk** button.

*The serial number and serial number version of the Network Node Kit disk is displayed in the **Seat ID** field. This number can be compared with the serial numbers in the **List of Installed Seat IDs** to ensure that the number has not been previously registered.*

- ▶ To register the network node serial number, click on the **Add Seat** button. The network node serial number will be registered. The **Number of Seats Installed** field will be updated to reflect the addition of a new network seat, and the newly registered serial number will appear in the **List of Installed Seat IDs**.
- ▶ Remove the Network Node Kit disk from the disk drive and repeat the previous five steps for each Network Node Kit you wish to register.
- ▶ When all network seats have been registered, exit the program by selecting **Exit** from the **Options** menu, or by clicking on the **Finished** button.

## **SERNSTAL specific error messages**

---

The following is a description of additional messages that may appear while using SERNSTAL.

**This disk contains a previously installed serial number** This message appears if the serial number on the Network Node Kit or Ventura Publisher Application currently in the floppy drive has already been registered. Insert a different network node disk, or Ventura Publisher APPLICATION disk, and try again.

**This disk does not contain a serial number** This message occurs if the disk currently in the floppy disk does not contain a serial number. Ensure that either a Network Node Kit or a Ventura Publisher Application floppy disk is inserted in the floppy drive before attempting to register a seat.

**This disk contains an invalid serial number** This message occurs when the serial number file on the Network Node Kit or Ventura Publisher Application floppy disk is from a sales demo package, is corrupt, or has been altered.

---

## Customizing the button bar

---

The button bar in Ventura Publisher can be customized using the Button Configuration application that was installed with Ventura Publisher.

Ventura Publisher allows three different button configurations. Each configuration corresponds to a different video resolution as determined by the resolution of the video driver installed in Windows. The three configuration resolutions are:

- VGA – 640 x 480 resolution
- Super VGA – 800 x 600 resolution
- Extended VGA – 1024 x 768 resolution and above

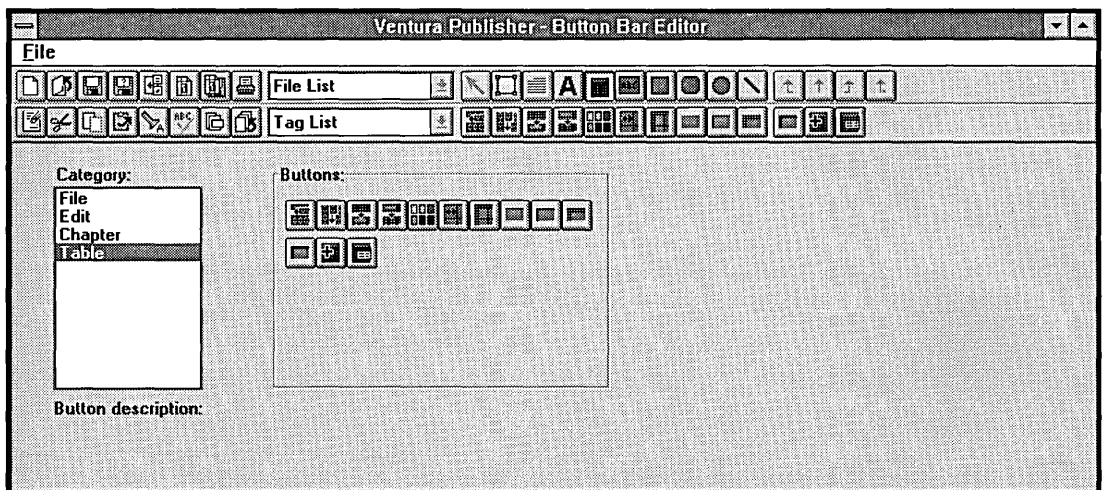
The button configuration is stored in the VPWIN.INI file located in the directory in which Windows is installed. This INI file should not be edited using an application other than the button configuration application.

---

### Description

---

- Open Ventura Publisher window in the Windows Program Manager and double-click on the Button Configuration icon. The Button Bar Editor is displayed.



---

**Button bar** The button bar displayed is a representation of the Ventura Publisher button bar configuration for the current video resolution. The tool buttons cannot be changed or replaced, nor can any option or function buttons be added to that row of the button bar. Clicking on a button in the button bar will display a description of that button in the button description area.

Each of the tool buttons, when selected, display a set of option buttons. The following is a list of the tool buttons and the option buttons available for editing when the tool button is selected.

**Selector tool** – Not available for selection.

**Add Frame tool** – Displays the option buttons available when the Selector tool is used to select a frame.

**Paragraph tool** – Displays the option buttons available when a paragraph is selected using either the Paragraph tool or the Text tool. The option button configuration is the same for both.

**Text tool** – Displays the options available when a selected range of text is highlighted using the Text tool.

**Graphic tools** – Displays the options available when the Selector tool is used to select a Ventura Publisher graphic. Each of the graphic buttons display the same set of option buttons.

**Category list box** The options in the **Category** list box control which buttons are displayed in the **Buttons** box. A category option will only be available if the option buttons for that category can be used with the currently selected tool button (e.g., the **Frame**, **Paragraph**, **Text**, and **Graphic** category options will not be available if the Table tool button is selected in the button bar).



The **File**, **Edit**, and **Chapter** categories will always be available regardless of the tool selected. The buttons for these categories correspond to the buttons used in the function button area of the button bar. The buttons for these category options cannot be used as tool option buttons.

Additionally, tool option buttons cannot be used in the function button area of the button bar.

---

**Buttons box** The **Buttons** box displays all of the buttons that can be placed in the button bar for the currently selected category. Clicking on a button in the button box will display a description of that button in the button description area.

## Editing the button bar

---

Using the mouse, you can interactively customize the button bar as follows:

- If you wish to edit the tool option buttons, click on the desired tool button in the button bar. When you click on one of the tool buttons, the option buttons change to represent the options most commonly used with that tool button.
- Selected the desired **Category** list box option.
- To delete a button from the button bar, simply drag the button off of the button bar.
- To insert a button between two buttons in the button bar, drag the desired button from the **Button** box and place it between the two buttons in the button bar.

You can continue to add buttons to the button bar as long as space is available in the button bar for more buttons. If the space for buttons is filled, and you insert a new button, the button on the right end of the row will be automatically deleted.

**Saving the configuration** To save the button bar configuration, select the **Save** option from the **File** menu. To quit without saving the configuration, select the **Exit** option from the **File** menu and then click on the **No** button when the alert box is displayed.

Ventura Publisher Windows Edition 4.1 includes a number of utilities. A description of these utilities and their use are described in this section. These utilities are:

**VP43.EXE** – Utility for converting chapter files saved in version 4.0 and above to 2.0/3.0 format.

**FIXCHP.EXE** – Utility for updating chapter file pointers after chapter files have been copied using Windows File Manager or DOS Copy:

---

## VP43.EXE

---

This utility allows you to convert chapters files saved in version 4.0 and above to 2.0/3.0 format.



The conversion utility will generate a backup of the original chapter and style sheet files. The extensions for these files will be &HP for chapters files, and &TY for style sheet files. The backup files will be 4.1 version files.

---

To use the VP43.EXE utility:

- Copy the VP43.EXE file from the UTILITY directory on the Ventura Publisher Windows Edition 4.1 UTILITIES disk to the directory containing the chapter and style sheet files you wish to convert, or to a directory listed in the PATH statement of your AUTOEXEC.BAT file.
- Change to the drive and directory containing the chapter and style sheet files you wish to convert.
- At the DOS prompt, type:

```
VP43 [filename] C2 C3 C4 C5 C6 C7
```

where [filename] is replaced with the name of the chapter you wish to convert to 2.0/3.0 format. The chapter name and extension cannot contain any DOS wildcard characters. C2 through C7 are replaced with the version 4.1 style sheet color numbers you wish to be saved in the version 2.0/3.0 style sheet.

For example:

```
VP43 SCOOP.CHP 17 4 5 6 21 22
```

would convert the 4.1 format chapter and associated style sheet to 2.0/3.0 format. Color numbers 17, 4, 5, 6, 21, and 22 in the 4.1 format style sheet would become colors 2, 3, 4, 5, 6, and 7 in the 2.0/3.0 format style sheet.



If you do not specify any color numbers on the command line, VP43 will save the eight default colors (numbers 0 through 7) from the 4.1 format style sheet to the 2.0/3.0 format style sheet.

---

---

## Determining 4.1 style sheet color numbers

---

To determine the color numbers of the color saved in a 4.1 format style sheet:

- ▶ With Ventura Publisher 4.1 running, load the style sheet you wish to convert to 2.0/3.0 format.
- ▶ Click on the Paragraph tool button and click on the **Update Tag List** option button. The Update Tag List dialog box is displayed.
- ▶ Click on the **Print Stylesheet** button.
- ▶ Ventura Publisher will prompt you for file name under which to save a text file containing the settings (including the color numbers) for the loaded style sheet. Enter a path and file name for the file, and then click on the **OK** button.

The text file will be saved as a generated (GEN) file. This file can be loaded into Ventura Publisher and formatted using the STYLELOG.STY style sheet included with the Ventura Publisher examples. You can then print the chapter to obtain a listing of all color numbers for the colors saved in the style sheet.

---

## Limitations

---

The Ventura Publisher style sheet format for versions prior to 4.0 allows only eight colors to be defined (two of which, white and black, cannot be changed). When converting a style sheet from 4.1 format to 2.0/3.0 format, you are allowed to save only six of the colors defined in the 4.1 style sheet.

Colors applied to paragraph tags and frames that are not saved in the 2.0/3.0 format style sheet will be converted to black (color number 1).

You may notice differences in the color settings when a color is converted to 2.0/3.0 format. This happens when a color is defined in a 4.1 format style sheet in a color model other than CMYK. The differences occur as a normal part of translating the color from one color model to CMYK. These differences will be minimal.

Ventura Publisher graphics (stored in the VGR file), text files, and caption text (stored in the CAP file) such as headers and footers are unaffected by VP43. Consequently, colors assigned to Ventura Publisher graphics and caption text will not be converted, and will have to be changed manually.

Additionally, text assigned color either by selecting a range of text using the text tool and applying a color, or entering color codes in the text file, will not be converted and will have to be converted manually.

Text and image/line art file formats are also unaffected by the converter. If the file format of a text or image/line art file is not supported in the earlier version, you will receive an error message stating that one or more of the files are not in the proper format, or cannot be converted when you attempt to open the chapter. These files should be converted to a format supported in the earlier version before the chapter is converted.



References to files saved in a format not supported by the version of Ventura Publisher in which the chapter is opened, will be removed from the chapter if saved in that version of Ventura Publisher.

---



The chapter (CHP) file lists the name and location of all of the files associated with the chapter. If you use the Windows File Manager or the DOS COPY command to copy chapter files, the file location pointers listed in the CHP file do not change and will probably be wrong.

This utility will update the pointers in the chapter file that refer to the various components of a chapter (e.g., text files, image files) after the files have been copied using the Windows File Manager, or the DOS COPY command.

FIXCHP will also update the width table entry of the style sheet used in the chapter.



All of the files associated with the chapter (including the width table) must be copied to the same directory. FIXCHP will only work with CHP files, not publication (PUB) files. Publications will have to be reconstructed from the updated chapter files.

---

To use FIXCHP:

- Copy the FIXCHP.EXE file from the UTILITY directory on the Ventura Publisher Windows Edition 4.1 UTILITIES disk to the directory containing the chapter files, or to a directory listed in the PATH statement of your AUTOEXEC.BAT file.
- Change to the drive and directory containing the chapter and associated files.
- At the DOS prompt, type:

```
FIXCHP [CHP name]
```

where [CHP name] is replaced with the name (including file extension) of the chapter you want updated. The chapter name and extension can contain any valid DOS wildcard characters.

**Ventura Software Inc.**  
**15175 Innovation Drive**  
**San Diego, CA 92128**

**Part No. 610S55128**