

Bay Networks

The Merged Company of SynOptics and Wellfleet

Customizing AppleTalk Services

Part No. 110046 A

Customizing AppleTalk Services

Router Software Version 8.10
Site Manager Software Version 2.10

Part No. 110046 Rev. A
February 1995



Bay Networks

The Merged Company of SynOptics and Wellfleet

Copyright © 1995 Bay Networks, Inc.

All rights reserved. Printed in USA. February 1995.

The information in this document is subject to change without notice. This information is proprietary to Bay Networks, Inc.

The software described in this document is furnished under a license agreement or nondisclosure agreement and may only be used in accordance with the terms of that license. The terms of the Software License are provided with the documentation.

Restricted Rights Legend

Use, duplication, or disclosure by the government is subject to restrictions as set forth in subparagraph (c)(1)(ii) of the Rights in Technical Data and Computer Software clause at DFARS 252.227-7013.

Notice for All Other Executive Agencies

Notwithstanding any other license agreement that may pertain to, or accompany the delivery of, this computer software, the rights of the Government regarding its use, reproduction, and disclosure are as set forth in the Commercial Computer Software-Restricted Rights clause at FAR 52.227-19.

Trademarks of Bay Networks, Inc.

ACE, BLN, BN, and Wellfleet are registered trademarks and AFN, AN, ASN, BCN, BCNX, BLNX, BNX, CN, FN, FRE, LN, PPX, Bay Networks, and the Bay Networks logo are trademarks of Bay Networks, Inc.

Third-Party Trademarks

3Com is a registered trademark of 3Com Corporation.

AIX, NetView, and IBM are registered trademarks of International Business Machines Corporation.

AppleTalk, EtherTalk, LaserWriter, and TokenTalk are registered trademarks of Apple Computer, Inc.

AT&T and ST are registered trademarks of American Telephone and Telegraph Company.

DEC, DECnet, VAX, and VT100 are trademarks of Digital Equipment Corporation.

Distinct is a registered trademark and Distinct TCP/IP is a trademark of Distinct Corporation.

Fastmac and MADGE are trademarks of Madge Networks, Ltd.

Hayes is a registered trademark of Hayes Microcomputer Products, Inc.

HP is a registered trademark of Hewlett-Packard Company.

Intel is a registered trademark of Intel Corporation.

IPX, NetWare, and Novell are registered trademarks of Novell, Inc.

MCI is a registered trademark of MCI Communications Corporation.

Microsoft, MS, and MS-DOS are registered trademarks and Windows is a trademark of Microsoft Corporation.

Motif and OSF/Motif are registered trademarks of Open Software Foundation, Inc.

Motorola is a registered trademark of Motorola, Inc.

NetBIOS is a trademark of Micro Computer Systems, Inc.

Open Look and UNIX are registered trademarks of UNIX System Laboratories, Inc.

Sun and Solaris are registered trademarks and SPARCstation is a trademark of Sun Microsystems, Inc.

VINES is a registered trademark of Banyan Systems Incorporated.

X Window System is a trademark of the Massachusetts Institute of Technology.

Xerox is a registered trademark and XNS is a trademark of Xerox Corporation.

All other trademarks and registered trademarks are the property of their respective owners.

Bay Networks Software License

This Software License shall govern the licensing of all software provided to licensee by Bay Networks (“Software”). Bay Networks will provide licensee with Software in machine-readable form and related documentation (“Documentation”). The Software provided under this license is proprietary to Bay Networks and to third parties from whom Bay Networks has acquired license rights. Bay Networks will not grant any Software license whatsoever, either explicitly or implicitly, except by acceptance of an order for either Software or for a Bay Networks product (“Equipment”) that is packaged with Software. Each such license is subject to the following restrictions:

1. Upon delivery of the Software, Bay Networks grants to licensee a personal, nontransferable, nonexclusive license to use the Software with the Equipment with which or for which it was originally acquired, including use at any of licensee’s facilities to which the Equipment may be transferred, for the useful life of the Equipment unless earlier terminated by default or cancellation. Use of the Software shall be limited to such Equipment and to such facility. Software which is licensed for use on hardware not offered by Bay Networks is not subject to restricted use on any Equipment, however, unless otherwise specified on the Documentation, each licensed copy of such Software may only be installed on one hardware item at any time.
2. Licensee may use the Software with backup Equipment only if the Equipment with which or for which it was acquired is inoperative.
3. Licensee may make a single copy of the Software (but not firmware) for safekeeping (archives) or backup purposes.
4. Licensee may modify Software (but not firmware), or combine it with other software, subject to the provision that those portions of the resulting software which incorporate Software are subject to the restrictions of this license. Licensee shall not make the resulting software available for use by any third party.
5. Neither title nor ownership to Software passes to licensee.
6. Licensee shall not provide, or otherwise make available, any Software, in whole or in part, in any form, to any third party. Third parties do not include consultants, subcontractors, or agents of licensee who have licensee’s permission to use the Software at licensee’s facility, and who have agreed in writing to use the Software only in accordance with the restrictions of this license.

-
7. Third-party owners from whom Bay Networks has acquired license rights to software that is incorporated into Bay Networks products shall have the right to enforce the provisions of this license against licensee.
 8. Licensee shall not remove or obscure any copyright, patent, trademark, trade secret, or similar intellectual property or restricted rights notice within or affixed to any Software and shall reproduce and affix such notice on any backup copy of Software or copies of software resulting from modification or combination performed by licensee as permitted by this license.
 9. Licensee shall not reverse assemble, reverse compile, or in any way reverse engineer the Software. [Note: For licensees in the European Community, the Software Directive dated 14 May 1991 (as may be amended from time to time) shall apply for interoperability purposes. Licensee must notify Bay Networks in writing of any such intended examination of the Software and Bay Networks may provide review and assistance.]
 10. Notwithstanding any foregoing terms to the contrary, if licensee licenses the Bay Networks product "Site Manager," licensee may duplicate and install the Site Manager product as specified in the Documentation. This right is granted solely as necessary for use of Site Manager on hardware installed with licensee's network.
 11. This license will automatically terminate upon improper handling of Software, such as by disclosure, or Bay Networks may terminate this license by written notice to licensee if licensee fails to comply with any of the material provisions of this license and fails to cure such failure within thirty (30) days after the receipt of written notice from Bay Networks. Upon termination of this license, licensee shall discontinue all use of the Software and return the Software and Documentation, including all copies, to Bay Networks.
 12. Licensee's obligations under this license shall survive expiration or termination of this license.

Contents

Chapter 1

AppleTalk Overview

AppleTalk Networking	1-1
AppleTalk Addresses	1-2
AppleTalk Zones	1-4
Seed Routers and Nonseed Routers	1-4
How the Wellfleet AppleTalk Router Works	1-4
AppleTalk Link Access Protocols (TLAP and ELAP)	1-5
AppleTalk Address Resolution Protocol (AARP)	1-5
Datagram Delivery Protocol (DDP)	1-8
Routing Table Maintenance Protocol (RTMP)	1-10
Zone Information Protocol (ZIP)	1-11
Name Binding Protocol (NBP)	1-13
AppleTalk Echo Protocol (AEP)	1-14
AppleTalk Update-based Routing Protocol (AURP)	1-14
AURP Tunneling	1-15
Update-Based Routing Table Maintenance	1-19
Hop Count Reduction	1-19
For More Information	1-20

Chapter 2

Implementing AppleTalk Services

AppleTalk Interfaces over WAN Media	2-2
AppleTalk Running on Frame Relay or SMDS	2-2
Configuring AppleTalk as a Nonextended Network over PPP	2-2
Configuring AppleTalk as an Extended Network over PPP	2-4
Seed Router Interfaces	2-6
Interface Costs	2-7
AppleTalk Routing and Bridging on the Same Interface	2-9
AppleTalk Zone Information	2-9
Adding or Removing AppleTalk Zones	2-9
Using AppleTalk Zone Filters	2-11
How Zone Filters Work	2-12
Zone Filter Rules	2-16
AppleTalk Network Topology Information	2-29
Configuring the AppleTalk Router to Source Route over Token Ring Networks	2-29
Configuring the AppleTalk Router in a Non-Fully Meshed Frame Relay Topology	2-30
How Can I Reduce Excess Routing Traffic on a Large AppleTalk Network?	2-31
Can I Add My Wellfleet AppleTalk Router to a Transitional Network?	2-32
AURP Information	2-32
When Should I Use AURP?	2-33
Setting the Update Rate	2-33
Setting the Last Heard From Timeout	2-34
Setting the Hop Count Reduction	2-35
Setting the Command Timeout and Command Retries	2-35

Setting Zone Filters	2-36
Setting the Interface Cost	2-36
AppleTalk Dial-on-Demand Routing	2-36

Chapter 3

Editing AppleTalk Parameters

Accessing AppleTalk Parameters	3-2
Editing the AppleTalk Global Parameter	3-3
Editing AppleTalk Interface Parameters	3-4
Configuring AppleTalk Zone Lists	3-12
Adding Zones to a Zone List	3-13
Deleting Zones from the Zone List	3-15
Changing the AppleTalk Default Zone	3-16
Configuring AppleTalk Zone Filters	3-17
Adding Zones to the Zone Filter List	3-17
Editing the Zone Filter List	3-19
Deleting Zones from the Zone Filter List	3-21
Selecting the Name Binding Protocol Interface	3-22
Globally Deleting AppleTalk	3-23
Editing AURP Parameters	3-23
Editing AURP Global Parameters	3-24
Editing AURP Interface Parameters	3-25
Editing the AURP Zone Filter List	3-30

Index

Figures

Figure 1-1.	AppleTalk Address with 24 Bits	1-2
Figure 1-2.	Extended and Nonextended AppleTalk Network	1-3
Figure 1-3.	AARP Packets	1-7
Figure 1-4.	DDP Packet	1-9
Figure 1-5.	RTMP Data Packet	1-10
Figure 1-6.	ZIP Response Packets	1-11
Figure 1-7.	ZIP GetNetInfo Packets	1-12
Figure 1-8.	NBP Packets	1-13
Figure 1-9.	AURP Tunneling across an IP Internet	1-15
Figure 1-10.	Fully Connected Tunnel	1-16
Figure 1-11.	Partially Connected Tunnel	1-17
Figure 1-12.	AppleTalk Data Packet Forwarded across an AURP Tunnel	1-18
Figure 2-1.	AppleTalk Nonextended Configuration over PPP	2-4
Figure 2-2.	AppleTalk Extended Configuration over PPP	2-6
Figure 2-3.	Assigning Circuit Costs to AppleTalk Interfaces	2-8
Figure 2-4.	Updating an AppleTalk Router's Zone List	2-11
Figure 2-5.	Configuring Zone Filters with the Exclude Option	2-13
Figure 2-6.	Configuring Zone Filters with the 5.X Exclude Option	2-15
Figure 2-7.	AppleTalk Zone Filters with the Exclude Option: Rule 1	2-16
Figure 2-8.	AppleTalk Zone Filters with the Exclude Option: Rule 2	2-17
Figure 2-9.	AppleTalk Zone Filters with the Exclude Option: Rule 3	2-18
Figure 2-10.	AppleTalk Zone Filters with the Exclude Option: Rule 4	2-19
Figure 2-11.	AppleTalk Zone Filters with the Include Option: Rule 1	2-20
Figure 2-12.	AppleTalk Zone Filters with the Include Option: Rule 2	2-21
Figure 2-13.	AppleTalk Zone Filters with the Include Option: Rule 3	2-22

Figure 2-14. AppleTalk Zone Filters with the 5.X Exclude Option: Rule 1	2-23
Figure 2-15. AppleTalk Zone Filters with the 5.X Exclude Option: Rule 2	2-24
Figure 2-16. AppleTalk Zone Filters with the 5.X Exclude Option: Rule 3	2-25
Figure 2-17. AppleTalk Zone Filters with the 5.X Include Option: Rule 1	2-26
Figure 2-18. AppleTalk Zone Filters with the 5.X Include Option: Rule 2	2-27
Figure 2-19. AppleTalk Zone Filters with the 5.X Include Option: Rule 3	2-28
Figure 2-20. AppleTalk Routers Source Routing across a Token Ring Network	2-29
Figure 2-21. AppleTalk Routers in a Non-Fully Meshed Frame Relay Topology	2-31
Figure 2-22. Network Loop	2-35
Figure 3-1. Configuration Manager Window	3-2
Figure 3-2. AppleTalk Global Parameters Window	3-3
Figure 3-3. AppleTalk Interface Configuration Window	3-5
Figure 3-4. AppleTalk Zone Configuration Window	3-13
Figure 3-5. AppleTalk Zone Filter Configuration Window	3-18
Figure 3-6. AppleTalk Zone Filter Autoconfiguration Window	3-19
Figure 3-7. AppleTalk Interfaces Window	3-22
Figure 3-8. AURP Global Parameters Window	3-24
Figure 3-9. AURP Interface Configuration Window	3-26



About This Guide

If you are responsible for configuring and managing Wellfleet[®] routers, you need to read this guide, which describes how to customize Wellfleet router software for AppleTalk[®] services.

Refer to this guide for

- An overview of the AppleTalk routing protocol and a description of Wellfleet routing services (see the “AppleTalk Overview” chapter)
- Implementation notes that may affect how you configure AppleTalk routing services (see the “Implementing AppleTalk Services” chapter)
- Instructions on editing AppleTalk global and interface parameters and configuring AppleTalk services (see the “Editing AppleTalk Parameters” chapter)

For information and instructions about the following topics, see *Configuring Wellfleet Routers*.

- Initially configuring and saving an AppleTalk interface
- Retrieving a configuration file
- Rebooting the router with a configuration file

Before You Begin

Before using this guide, you must complete the following procedures:

- Create and save a configuration file that contains at least one AppleTalk interface.
- Retrieve the configuration file in local, remote, or dynamic mode.

Refer to *Configuring Wellfleet Routers* for instructions.

How to Get Help

For additional information or advice, contact the Bay Networks Help Desk in your area:

United States	1-800-2LAN-WAN
Valbonne, France	(33) 92-966-968
Sydney, Australia	(61) 2-903-5800
Tokyo, Japan	(81) 3-328-0052

Conventions

angle brackets (< >)	Indicate that you choose the text to enter based on the description inside the brackets. Do not type the brackets when entering the command. Example: if command syntax is ping <ip_address>, you enter ping 192.32.10.12
arrow character (→)	Separates menu and option names in instructions. Example: Protocols→AppleTalk identifies the AppleTalk option in the Protocols menu.
brackets ([])	Indicate optional elements. You can choose none, one, or all of the options.
user entry text	Denotes text that you need to enter. Example: Start up the Windows environment by entering the following after the prompt: win
command text	Denotes command names in text. Example: Use the xmodem command.

<i>italic text</i>	Indicates variable values in command syntax descriptions, new terms, file and directory names, and book titles.
screen text	Indicates data that appears on the screen. Example: Set Trap Monitor Filters
ellipsis points	Horizontal (. . .) and vertical (:) ellipsis points indicate omitted information.
quotation marks (“ ”)	Indicate the title of a chapter or section within a book.
vertical line ()	Indicates that you enter only one of the parts of the command. The vertical line separates choices. Do not type the vertical line when entering the command. Example: If the command syntax is show at routes nets , you enter either show at routes or show at nets , but not both.

Acronyms

AARP	AppleTalk Address Resolution Protocol
AEP	AppleTalk Echo Protocol
AMT	Address Mapping Table
ATCP	AppleTalk Control Protocol
AURP	AppleTalk Update-based Routing Protocol
DDP	Datagram Delivery Protocol
DI	Domain Identifier
DLCI	Data Link Connection Identifier
FDDI	Fiber Distributed Data Interface
ELAP	EtherTalk Link Access Protocol
IP	Internet Protocol
LAN	Local Area Network
NBP	Name Binding Protocol
PPP	Point-to-Point Protocol
RFC	Request For Comments
RTMP	Routing Table Maintenance Protocol
SMDS	Switched Multimegabit Data Services

Acronyms

SNAP	Subnetwork Access Protocol
SNMP	Simple Network Management Protocol
TLAP	TokenTalk Link Access Protocol
UDP	User Datagram Protocol
WAN	Wide Area Network
ZIP	Zone Information Protocol

Chapter 1

AppleTalk Overview

This chapter provides an AppleTalk overview and describes how Wellfleet AppleTalk routing services work. It includes information on the following topics:

- ❑ AppleTalk network organization, addresses, and zones
- ❑ Seed routers and nonseed routers
- ❑ Wellfleet's implementation of AppleTalk routing protocols
- ❑ Initialization of Wellfleet AppleTalk interfaces
- ❑ Wellfleet's implementation of AURP
- ❑ More information about AppleTalk

AppleTalk Networking

The AppleTalk network system was developed by Apple[®] Computer Inc. to allow users of Apple and non-Apple computers on a network to communicate and share resources (such as printers or file servers).

AppleTalk's dynamic addressing scheme allows a user to plug a computer into an AppleTalk network and gain access to the network immediately, without first performing any complicated configuration procedures.

An AppleTalk internet is physically divided into distinct networks consisting of AppleTalk end nodes connected by routers. AppleTalk end nodes send and receive messages. Routers (like the Wellfleet AppleTalk

router) send and receive messages, and route messages throughout the AppleTalk network in datagram format.

AppleTalk Addresses

There are two types of AppleTalk networks: *extended* and *nonextended*. An extended network theoretically supports up to 16 million nodes and has the following characteristics:

- The network is assigned a *range* of 16-bit network numbers.
- Each node within the network is dynamically assigned a 24-bit AppleTalk address (Figure 1-1) that consists of a network number chosen from within the range assigned combined with an 8-bit node number. The values 0, \$FF, and \$FE are reserved for future use.

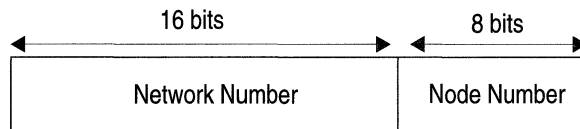


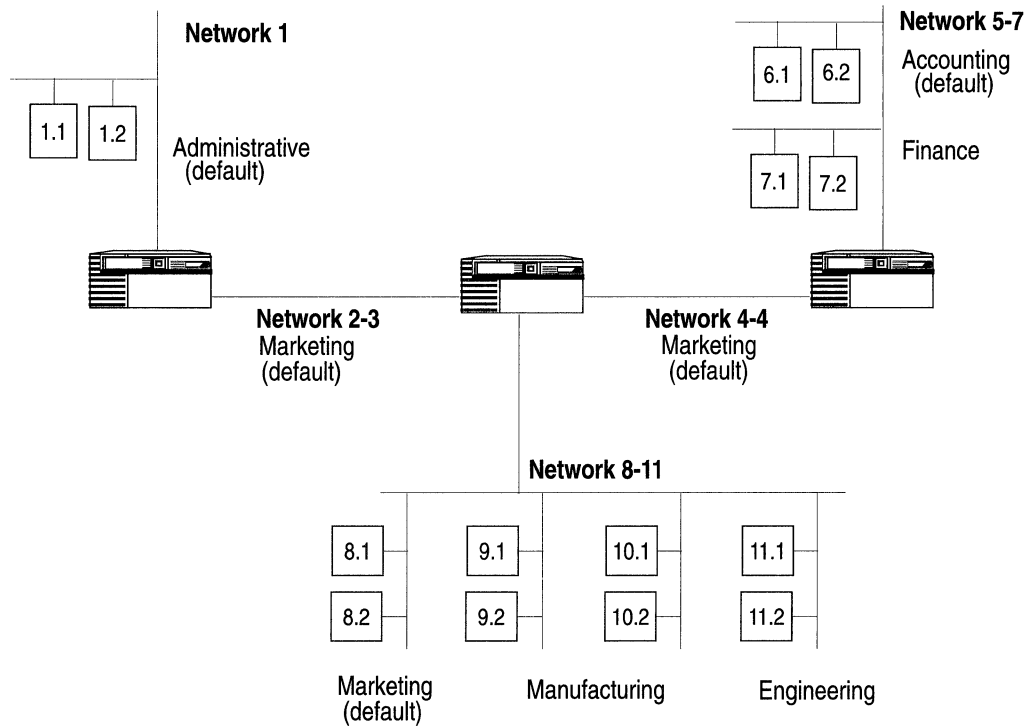
Figure 1-1. AppleTalk Address with 24 Bits

For example, in Figure 1-2, Networks 2-3, 4-4, 5-7, and 8-11 are extended networks.

A nonextended network supports up to 254 nodes and has the following characteristics:

- The entire network is assigned a *single* 16-bit network number.
- Each node within the network is dynamically assigned a 24-bit AppleTalk address that consists of the assigned network number combined with a unique, 8-bit node number.

For example, in Figure 1-2, Network 1 is a nonextended network.



Network Number Range	Network Type	Default Zone	Zone List
1	Nonextended	Administrative	Administrative
2-3	Extended	Marketing	Marketing
4-4	Extended	Marketing	Marketing
5-7	Extended	Accounting	Accounting Finance
8-11	Extended	Marketing	Marketing Manufacturing Engineering

Figure 1-2. Extended and Nonextended AppleTalk Network

AppleTalk Zones

Each AppleTalk network is logically divided into *zones*. Zones help you identify the location of a network entity or service. Similar network services are usually assigned to the same zone.

A network's *zone list* contains all the zones assigned to the network. A nonextended network consists of only a single zone. You can divide an extended network up into 255 zones, with one zone designated as the *default zone*. The same zone can be part of many different networks. When a new node first starts up on the network, it is assigned to the default zone. Later, you can reassign it to any valid zone on the zone list.

Seed Routers and Nonseed Routers

Each AppleTalk network must have at least one router designated as the *seed* router, which is a router configured with the following network information:

- Network number start range
- Network number end range
- Default zone name
- Zone list for the network

Seed routers provide this network information to all other nonseed routers on the network. Multiple seed routers can reside on the same network; however, they all must be configured with the same network ranges, default zone name, and zone list.

How the Wellfleet AppleTalk Router Works

This section describes the following AppleTalk protocols and notes any Wellfleet divergence from these standards:

- TokenTalk[®] Link Access Protocol (TLAP)
- EtherTalk[®] Link Access Protocol (ELAP)

- ❑ AppleTalk Address Resolution Protocol (AARP)
- ❑ Datagram Delivery Protocol (DDP)
- ❑ Routing Table Maintenance Protocol (RTMP)
- ❑ Zone Information Protocol (ZIP)
- ❑ Name Binding Protocol (NBP)
- ❑ AppleTalk Echo Protocol (AEP)
- ❑ AppleTalk Update-based Routing Protocol (AURP)

This section also describes how a Wellfleet AppleTalk interface initializes on the network.

AppleTalk Link Access Protocols (TLAP and ELAP)

The Wellfleet AppleTalk router uses AppleTalk link access protocols to transmit packets between nodes on the *same* physical network. (TokenTalk controls data transmission on Token Ring networks; EtherTalk controls data transmission on Ethernet networks.) The router also supports Fiber Distributed Data Interface (FDDI) and Wellfleet-proprietary synchronous encapsulation.

Note: The Wellfleet AppleTalk router does not support LocalTalk or AppleTalk Phase 1 routing. Thus, the Wellfleet AppleTalk router cannot directly attach to nonextended networks.

AppleTalk Address Resolution Protocol (AARP)

For a Wellfleet AppleTalk router to forward a packet to a directly connected AppleTalk node, the router needs to know both the packet's AppleTalk address and the corresponding hardware address of the node on which the AppleTalk address is found.

The router uses the AppleTalk Address Resolution Protocol (AARP) to map AppleTalk addresses to their equivalent hardware addresses. The router saves this information in its Address Mapping Table (AMT), which lists all known AppleTalk addresses, corresponding hardware

addresses, and the circuit/port on which the address resolution is in effect.

The router updates and maintains its AMT by broadcasting and receiving AARP packets (Figure 1-3). When the router needs to send a packet to a given AppleTalk address, it scans its AMT to find the address. If the address is not found, the router broadcasts a single *Request* packet to find out which node is using the address.

If the address exists, the node whose address matches that specified in the Request packet sends back a *Response*, which identifies the hardware address that maps to the AppleTalk address. The router then updates its AMT with this new information. The router waits 2 seconds for a response.

AARP is also responsible for generating a unique AppleTalk address for each of the router's AppleTalk interfaces that have not been explicitly assigned. This process is called *probing*. The Wellfleet AppleTalk router implements this by first generating a tentative AppleTalk address for the interface in the format

<start_network_number>.<start_node_number>

where

- *<start_network_number>* is the lowest end of the network number range assigned to the network to which this interface connects.
- *<start_node_number>* is a randomly selected node number that could be assigned to this interface.

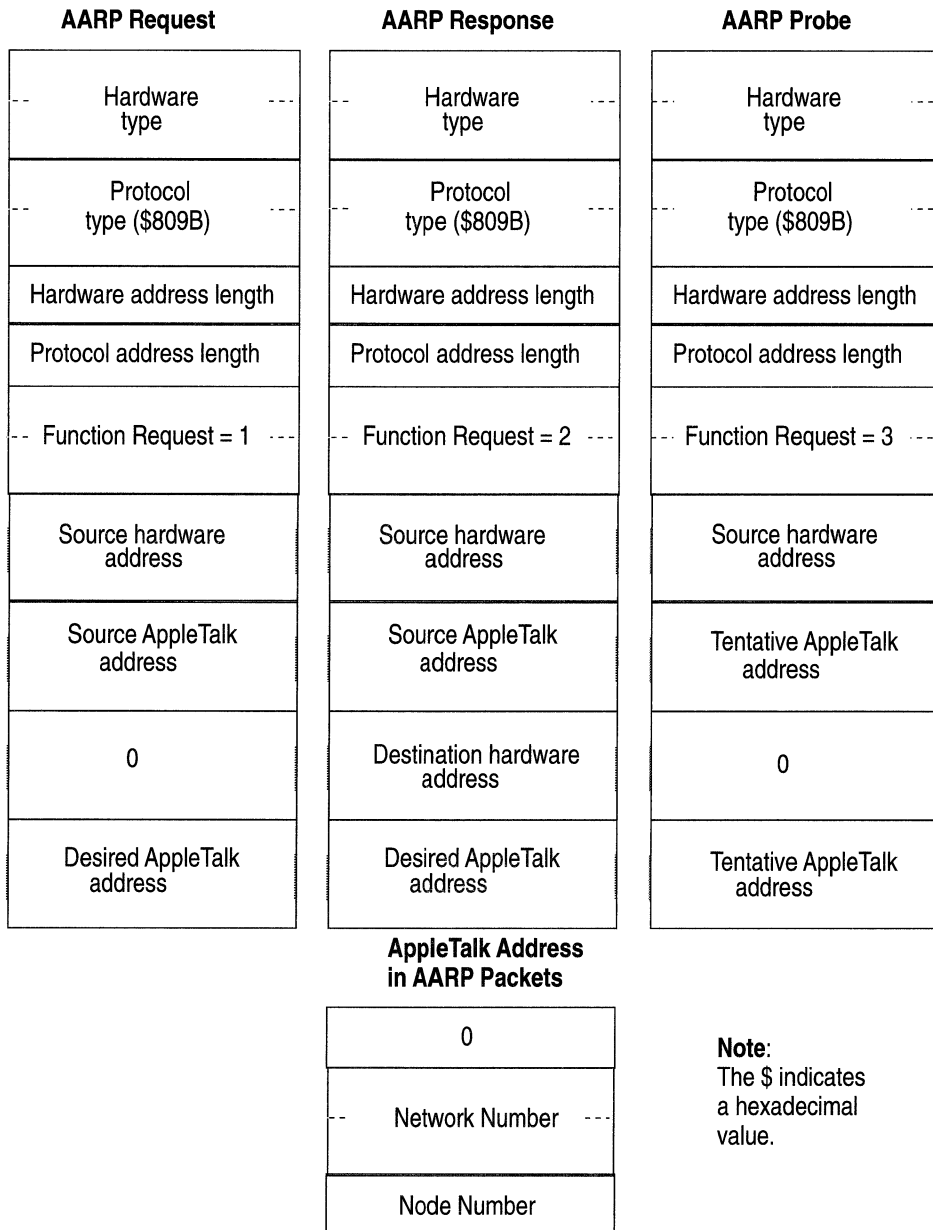


Figure 1-3. AARP Packets

Next, the router checks the validity of the address by broadcasting 10 AARP probe packets containing this address at 0.2-second intervals. (For WAN interfaces, the frequency is five AARP packets at 1.0-second intervals.) AARP probe packets inquire if any other node on the network is already using this address. If the router does not receive a response, then it knows that the address is unique on the network and assigns the address to the interface. If the router receives a response (or a probe for the same address), it knows the address is already in use. So, the router increments the node number by 1, then sends out 10 more probes. It repeats this process until it does not receive a response, or runs out of all possible node numbers.

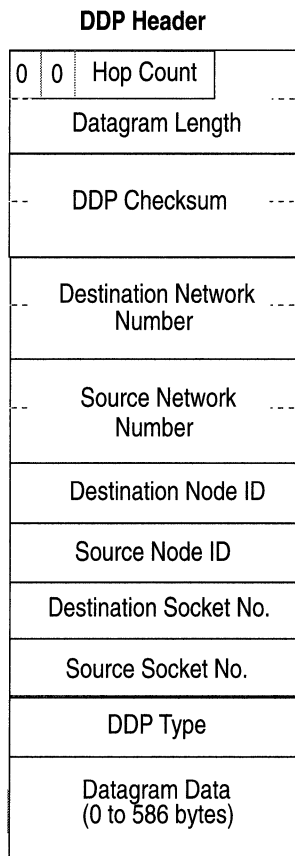
If the router runs out of possible node numbers, it increments the *start_network_number* by 1 and repeats the entire probe process. Finally, if the router is still unable to generate a unique address, it logs the error and shuts down the interface.

Note: If you statically configure the AppleTalk interface's address (setting the network ID and node ID to a nonzero value) and another AppleTalk device has already acquired this address, the router logs a message indicating that the address is already in use. The router cannot bring up such an interface.

Datagram Delivery Protocol (DDP)

The Wellfleet AppleTalk router uses the Datagram Delivery Protocol (DDP) to transmit packets between nodes on the network. The Datagram Delivery Protocol is an unreliable network layer protocol.

An AppleTalk datagram consists of the DDP header, immediately followed by the data. The Wellfleet router encapsulates all packets in an extended 13-byte DDP header (Figure 1-4). The source node sets the hop count field to zero before sending a packet out onto the network. Each router that receives the packet increments the hop count by one until it either reaches the destination end node, or reaches the maximum hop count (15), in which case it is discarded.

**Sockets**

0 = Invalid
 1 = RTMP
 2 = NIS
 4 = AEP
 6 = ZIS
 3, 5, \$07 - \$3F reserved
 \$40 - \$7F experimental
 \$80 - \$FE dynamic

DDP Types

0 = Invalid
 1 = RTMP
 2 = NBP
 3 = ATP
 4 = AEP
 5 = RTMP Req
 6 = ZIP
 7 = ADSP
 \$08 - \$0F reserved

Special Addresses

0000.FF = network-wide broadcast
nnnn.FF = broadcast to net *nnnn*
nnnn.00 = any router on net *nnnn*
nnnn.FE = reserved
 net FF00 - FFFE = startup range

Figure 1-4. DDP Packet

When the Wellfleet AppleTalk router receives a packet, it checks to see if the packet's destination network number is the local network. If it is, the router passes it down to the data link layer that forwards the packet toward the destination node. If the destination network number is a different network, the router refers to its routing tables to determine the next hop on the shortest path toward the destination.

Finally, the router increments the hop count by one, and forwards the packet toward the next hop. The router's routing tables are maintained using the Routing Table Maintenance Protocol.

Routing Table Maintenance Protocol (RTMP)

The Wellfleet AppleTalk router uses the Routing Table Maintenance Protocol (RTMP) to create and maintain the routing information DDP uses to transmit packets across an internet. Routing information is contained in the AppleTalk routing table.

Each table entry includes a destination network range, the AppleTalk protocol address (network number and node number) through which the destination is reached, the number of router hops to the destination, and the route status.

Routers create and update their routing tables by periodically constructing and broadcasting RTMP data packets to all other routers on directly connected links. An RTMP data packet contains the source address and the information stored in the originating router's routing table. All routers receiving the data packet use this information to update their own routing tables (Figure 1-5).

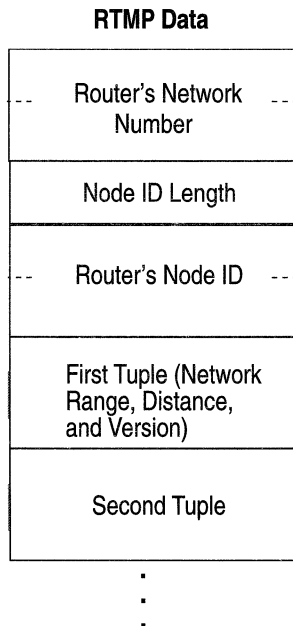


Figure 1-5. RTMP Data Packet

Zone Information Protocol (ZIP)

The Wellfleet AppleTalk router uses the Zone Information Protocol (ZIP) to map networks to zone names on the internet. The router stores this information in its zone information table, also called a *zone list*. The zone information table contains one entry for each network on the internet. The entry is in the format

<network_start, zone list>

The zone list field consists of a number of text strings that identify the zone names that are specified for that network. The router maintains and updates the zone list by broadcasting ZIP *Query* packets for zone list information to all other routers in the network. Other routers respond with ZIP response packets that have the zone lists (Figure 1-6).

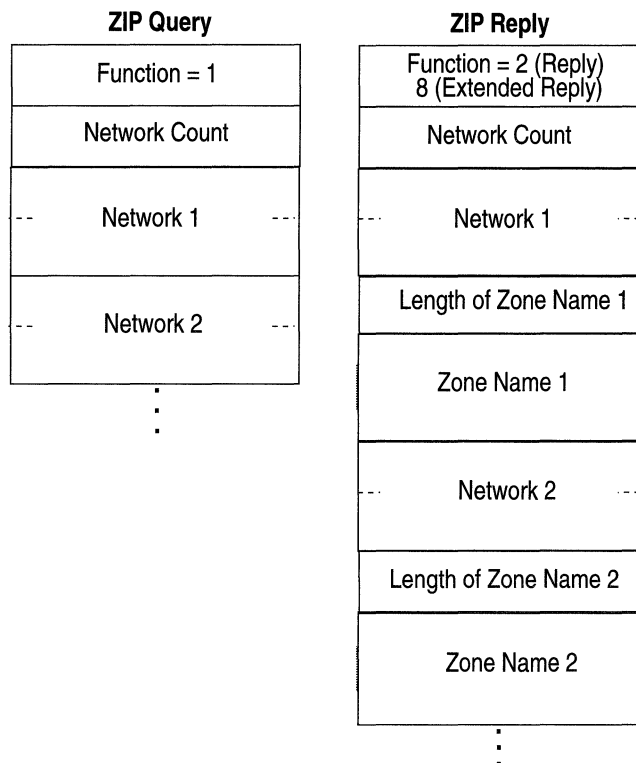


Figure 1-6. ZIP Response Packets

When an AppleTalk node starts up on the network, it requests zone and network information from all routers on the circuit by broadcasting ZIP GetNetInfo request packets (Figure 1-7). Upon receiving a GetNetInfo request, the router replies with a GetNetInfo response packet that confirms or denies the validity of the zone name and supplies the correct network range. If the stored zone name is invalid, the node uses the default zone name that is configured for the network instead.

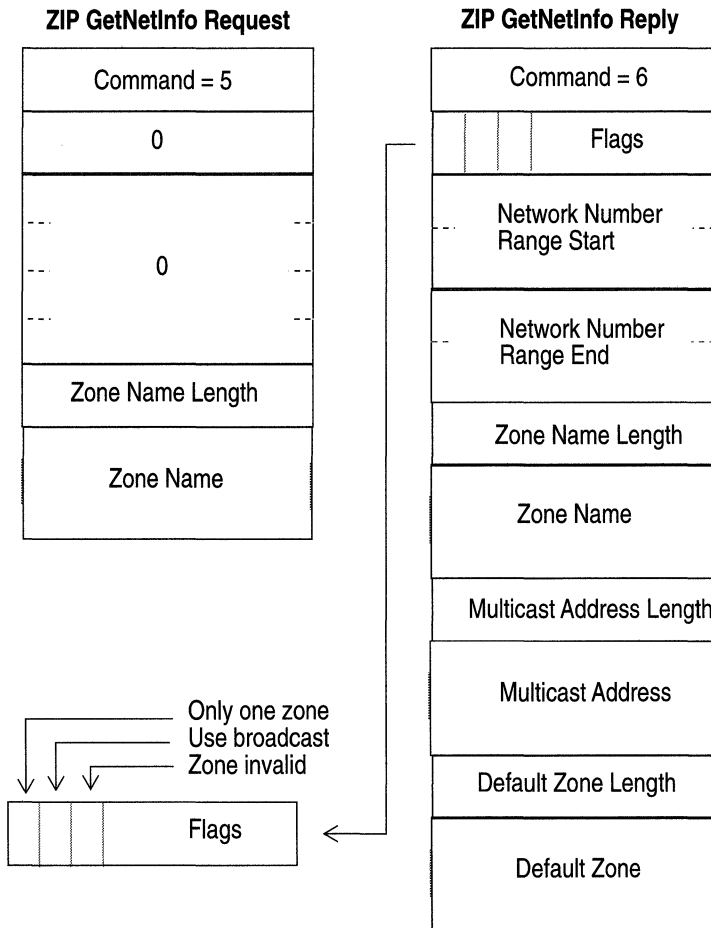


Figure 1-7. ZIP GetNetInfo Packets

Name Binding Protocol (NBP)

Macintosh® users on an AppleTalk network refer to services by name, rather than by physical location. For example, if you want to locate a printer, select the Chooser and then pick the printer by name, rather than by its AppleTalk address.

The Wellfleet AppleTalk router uses the Name Binding Protocol (NBP) and the Zone Information Protocol to map names of services to AppleTalk addresses.

When the router receives an NBP broadcast request packet for a named entity from an AppleTalk node, it refers to its zone list to see in which network the requested entity's zone is located. If the zone is on the local network, it broadcasts an NBP lookup request packet. If the zone is located on a different network, it sends out an NBP forward request packet toward the router connected to the network with the destination zone. Upon receiving a forward request, that router then broadcasts an NBP lookup request (Figure 1-8).

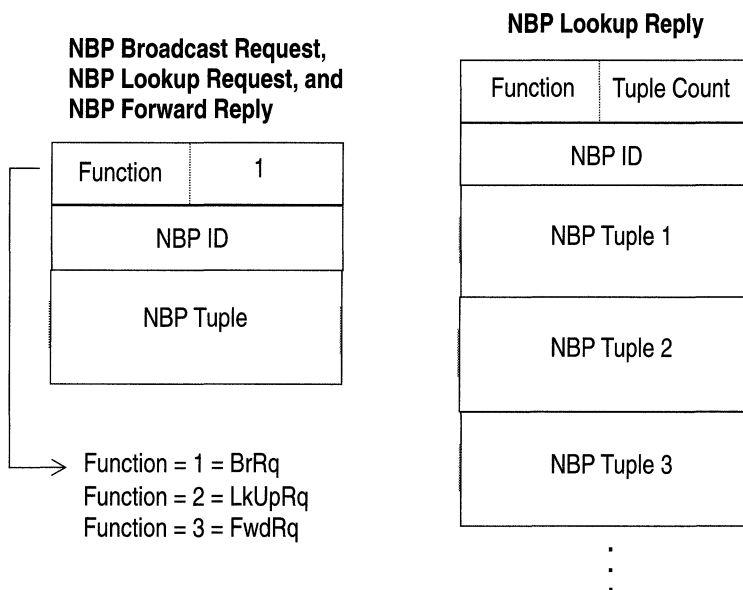


Figure 1-8. NBP Packets

An NBP named entity consists of the name, type, and zone name, where

- ❑ *Name* is the name assigned to the device that identifies it on the network.
- ❑ *Type* specifies the device type; for example, the type specified for a laser printer is identified by the type LaserWriter®.
- ❑ *Zone name* specifies the AppleTalk zone in which the device resides.

AppleTalk Echo Protocol (AEP)

The Wellfleet AppleTalk router supports the AppleTalk Echo Protocol (AEP), which allows the router to respond to echo packets sent to it by other nodes on the network.

AppleTalk Update-based Routing Protocol (AURP)

To address limitations restricting AppleTalk's use as an effective enterprise network solution, Apple Computer recently introduced the AppleTalk Update-based Routing Protocol (AURP). The Wellfleet AppleTalk router supports AURP.

AURP provides an optional set of features that you can use with an AppleTalk Phase 2 network. AURP provides more efficient use of network bandwidth, increased network security, and enables AppleTalk networks to exchange data through a *tunnel*.

Wellfleet supports three main AURP features:

- ❑ *AURP tunneling* to allow AppleTalk communications over existing wide-area Internet Protocol (IP) backbones
- ❑ *Update-based routing table maintenance* to reduce bandwidth use over a tunnel
- ❑ *Hop-count reduction* to extend the current AppleTalk 15-hop limit

The following sections provide a brief overview of the AURP features supported by Wellfleet router software.

AURP Tunneling

AURP tunneling allows you to connect two or more previously unconnected AppleTalk internets over an IP internet (Figure 1-9). The sending router encapsulates each AppleTalk data packet in IP and delivers it to the router on the other side of the tunnel. The router receiving the encapsulated packet removes the IP header and forwards the packet to the appropriate destination using standard AppleTalk delivery mechanisms.

AppleTalk routers that connect to an AURP tunnel are *exterior routers*. Exterior routers function as AppleTalk routers within the AppleTalk internet, and as end nodes within the IP internet. Exterior routers assign unique *domain identifiers* (DI) to AppleTalk internets to distinguish between multiple AppleTalk internets connected to the same tunnel.

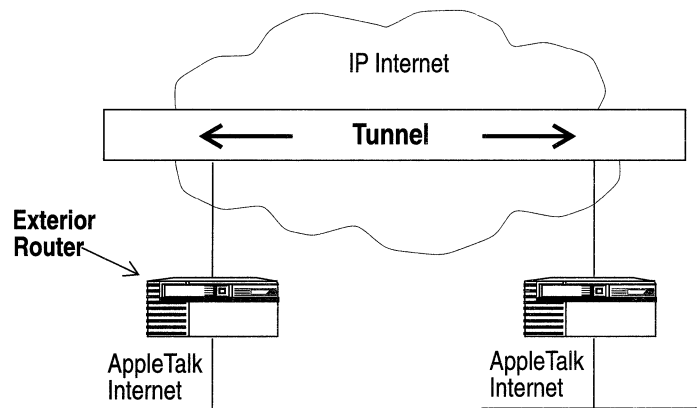


Figure 1-9. AURP Tunneling across an IP Internet

A Wellfleet AppleTalk router supports one fully connected or partially connected tunnel with multiple connections. In a fully connected tunnel, all exterior routers have connections to all other exterior routers in the tunnel and, as a result, have full access to all resources provided by these routers (Figure 1-10).

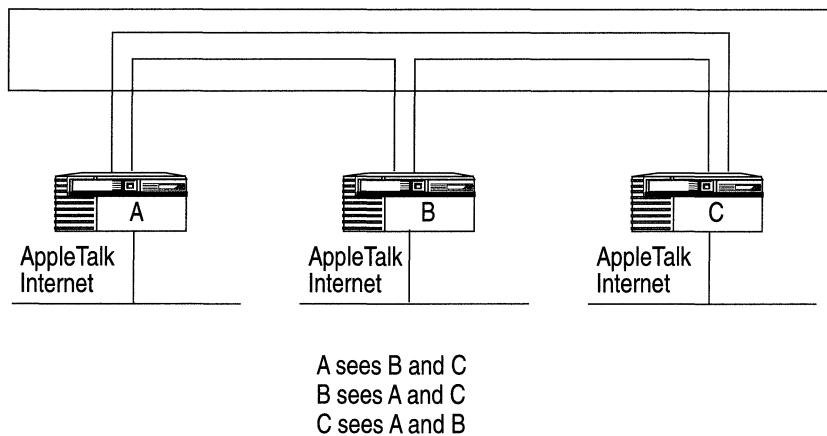


Figure 1-10. Fully Connected Tunnel

In a partially connected tunnel, two or more exterior routers do not have a connection. In such a tunnel, routers without an explicit connection cannot see each other's networks. This enables network administrators to control the view and access that users have to the resources on various protected networks. An exterior router in a partially connected tunnel advertises only its local internet. It does not advertise network information learned through a different connection on the tunnel (Figure 1-11).

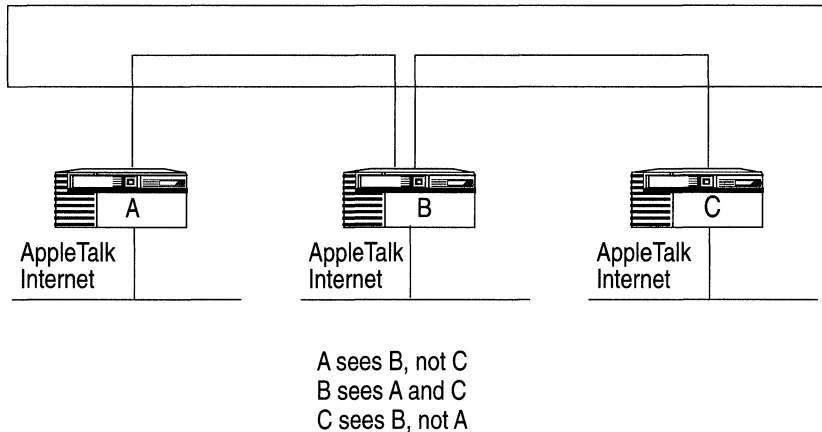


Figure 1-11. Partially Connected Tunnel

Tickle Request and *Tickle Acknowledgment* packets maintain the connection between two exterior routers. When an exterior router receives an AppleTalk data packet destined for an end system located across the IP internet, the router encapsulates the packet with the following headers before forwarding the packet onto the IP internet:

- ❑ *Data Link Header*, which specifies the data link frame information
- ❑ *IP Header*, which specifies the source and destination IP address
- ❑ *UDP Header*, which specifies the destination User Datagram Protocol (UDP) port
- ❑ *Domain Header*, which specifies the source and destination AppleTalk domain identifiers (DI); for AURP tunneling, DIs are derived from IP addresses

A Domain Header consists of the following fields:

- ❑ *Destination DI*, which contains the DI of the exterior router to which a packet is forwarded
- ❑ *Source DI*, which contains the DI of the exterior router that is forwarding a packet
- ❑ *Version Number*, which contains the value 0001

- ❑ *Reserved*, which is reserved for future use and contains the value 0000
- ❑ *Packet Type*, which contains the value 0002 to identify the data that follows as AppleTalk data, distinguishing it from other data, such as routing data (value 0003)

The receiving exterior router decapsulates the datagram, then forwards it to the destination AppleTalk end system. Figure 1-12 shows the format of an AppleTalk data packet forwarded across an AURP tunnel.

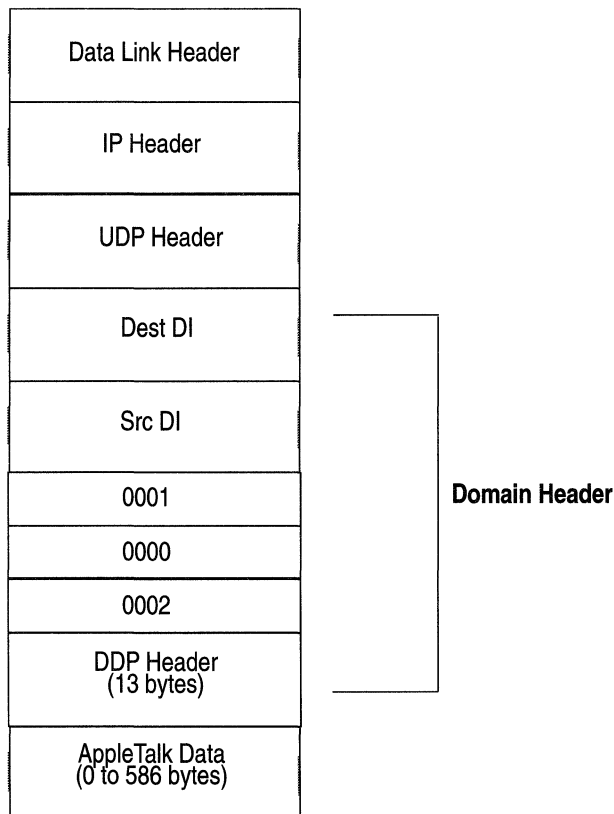


Figure 1-12. AppleTalk Data Packet Forwarded across an AURP Tunnel

Update-Based Routing Table Maintenance

Exterior routers connected to a tunnel use AURP to exchange routing information with other exterior routers connected to the same tunnel.

Note: Within its local AppleTalk internet, an exterior router uses Routing Table Maintenance Protocol (RTMP) to maintain current routing information.

When two exterior routers establish a connection via an AURP tunnel, they exchange complete routing information. Once the initial routing exchange takes place, there are no more complete routing table exchanges.

Instead, an exterior router only generates routing updates when an event occurs that changes its routing information, thus reducing the amount of routing protocol traffic on the network. In addition, the exterior router *buffers* updates until the next update interval occurs for the AURP connection.

Hop Count Reduction

When two AppleTalk networks communicate via a tunnel, the distance one of their packets must go to reach its destination can easily exceed the AppleTalk 15-hop limit. To ensure full access to resources beyond 15 hops, AURP provides a mechanism that enables you to reduce the hop count within the DDP header of an AppleTalk packet. With Hop Count Reduction enabled, all nodes across the network appear reachable within the AppleTalk 15-hop limit.

AURP routers receiving AppleTalk packets through a tunnel configured with Hop Count Reduction examine the routing table entry for that packet's destination network. If the destination network's distance plus the packet's hop count are greater than 15 hops, the AURP router reduces the hop count value of the packet to ensure delivery of the packet to its destination.

For example, an AppleTalk router with AURP configured receives an IP-encapsulated packet with a DDP header hop count field containing a value of 7. Prior to sending the packet to its final destination, the router checks the appropriate distance metric in its RTMP table and determines that the packet must travel another 10 hops to reach its final destination. The AppleTalk router then resets the hop count field of the DDP header to a value of 5, allowing the packet to reach its destination with the AppleTalk router's local network.

When using Hop Count Reduction on a tunneling port, an exterior router must represent all networks in its local internet as being only one hop away. Hop count reduction allows the router to send and maintain routing information about networks beyond the 15-hop limit, thus ensuring full connectivity.

For More Information

The following documents provide technical detail on AppleTalk protocol implementation.

Sidhu, G., R. Andrews, and A. Oppenheimer. *Inside AppleTalk*. 2nd edition. Reading, Massachusetts: Addison-Wesley Publishing Company, 1990.

Apple Computer. *AppleTalk Update-Based Routing Protocol*. Cupertino, California: Apple Computer, 1993.

Apple Computer. *The Design and Planning of Enterprise-Wide AppleTalk Internetworks*. San Francisco, California: AppleTalk Networking Forum, 1993.

Chapter 2

Implementing AppleTalk Services

This chapter contains Wellfleet specific implementation notes that you should keep in mind when you configure AppleTalk services. It describes what you need to know if you want to

- ❑ Configure AppleTalk interfaces on WAN media
- ❑ Configure seed router interfaces
- ❑ Specify interface costs
- ❑ Specify zone information for interfaces (add or remove zones, edit network and zone list information, configure zone filters)
- ❑ Configure AppleTalk interfaces in a non-fully meshed Frame Relay topology
- ❑ Configure AppleTalk interfaces in a Token Ring network
- ❑ Enable both AppleTalk routing and bridging on the same interface
- ❑ Reduce excess routing traffic on a large AppleTalk network
- ❑ Add AppleTalk routers to a transition network
- ❑ Configure AURP connections

AppleTalk Interfaces over WAN Media

The Wellfleet AppleTalk implementation includes Frame Relay, Switched Multimegabit Data Services (SMDS), and Point-to-Point Protocol (PPP) support that conforms to the following standards:

- RFC 1378: The PPP AppleTalk Control Protocol (ATCP).
- RFC 1294: Multiprotocol Interconnect over Frame Relay.
- Oppenheimer, Alan. "SMDSTalk: AppleTalk over SMDS." Apple Computer, August 17, 1992.

AppleTalk Running on Frame Relay or SMDS

When you enable AppleTalk on a Frame Relay or SMDS circuit, you can specify a MAC address and a broadcast address for the circuit using the WAN MAC Address and WAN Broadcast Address parameters. See the section "Editing AppleTalk Interface Parameters" in Chapter 3 for instructions. If you do not specify these values, then

- For Frame Relay circuits, the router broadcasts to all DLCIs
- For SMDS circuits, the router uses the addresses specified at the SMDS circuit level

Configuring AppleTalk as a Nonextended Network over PPP

To enable the Wellfleet AppleTalk software service to interoperate with router software that uses nonextended network configurations over PPP (RFC 1378 compliant), you must configure the AppleTalk interface as a seed router for a nonextended network. (For more information about seed routers, see "Seed Router Interfaces" later in this chapter.)

For instructions on how to initially configure an AppleTalk interface on a PPP circuit, see *Configuring Wellfleet Routers*. To edit an AppleTalk interface you have already configured, refer to the section "Editing AppleTalk Interface Parameters" in Chapter 3.

Make sure you configure the AppleTalk parameters as follows:

- ❑ Set the Network Start parameter to the desired value.
- ❑ Set the Network End parameter to 0, which indicates that the network is nonextended.
- ❑ Set the Default Zone parameter for the interface. The network can have only one zone, the Default Zone.
- ❑ Set the Network ID and the Node ID for the interface.

Figure 2-1 shows a sample AppleTalk Interface Configuration window for a nonextended configuration.

Note: If two routers are running Wellfleet Version 7.70 router software or later, and you configure an interface on each router for AppleTalk over PPP, the interfaces must be configured the same (that is, both interfaces must be configured for an extended network, or both interfaces must be configured for a nonextended network).

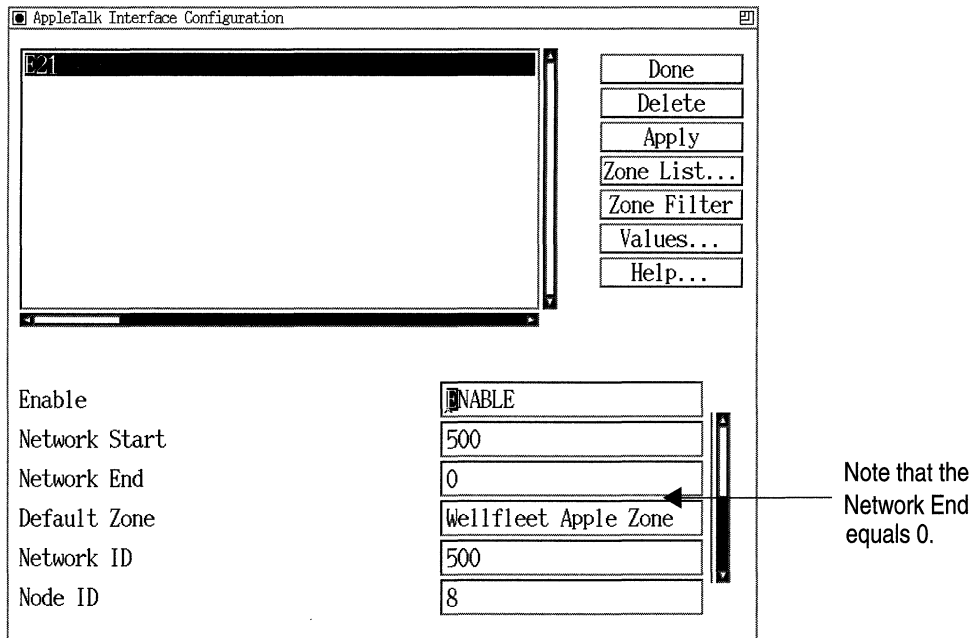


Figure 2-1. AppleTalk Nonextended Configuration over PPP

Configuring AppleTalk as an Extended Network over PPP

If you want to configure AppleTalk over PPP for an interface that is connected to a router running Wellfleet 5.70 or later router software or Wellfleet 7.60 or later router software, you must configure the AppleTalk interface as a seed router for an extended network. (For more information about seed routers, see “Seed Router Interfaces” later in this chapter.)

For instructions on how to initially configure an AppleTalk interface on a PPP circuit, see *Configuring Wellfleet Routers*. To edit an AppleTalk interface you have already configured, see “Editing AppleTalk Interface Parameters” in Chapter 3.

Make sure you configure the AppleTalk parameters as follows:

- ❑ Set the Network Start and Network End parameters. The network must have a range of one (for example, 4-4 or 10-10).
- ❑ Set the Default Zone. The network can have only one zone, the Default Zone.
- ❑ Set the Network ID and Node ID for the interface.

Figure 2-2 shows a sample AppleTalk Interface Configuration window for an extended configuration.

Note: If two routers are running Wellfleet Version 7.70 router software or later, and you configure an interface on each router for AppleTalk over PPP, the interfaces must be configured the same (that is, both interfaces must be configured for an extended network, or both interfaces must be configured for a nonextended network).

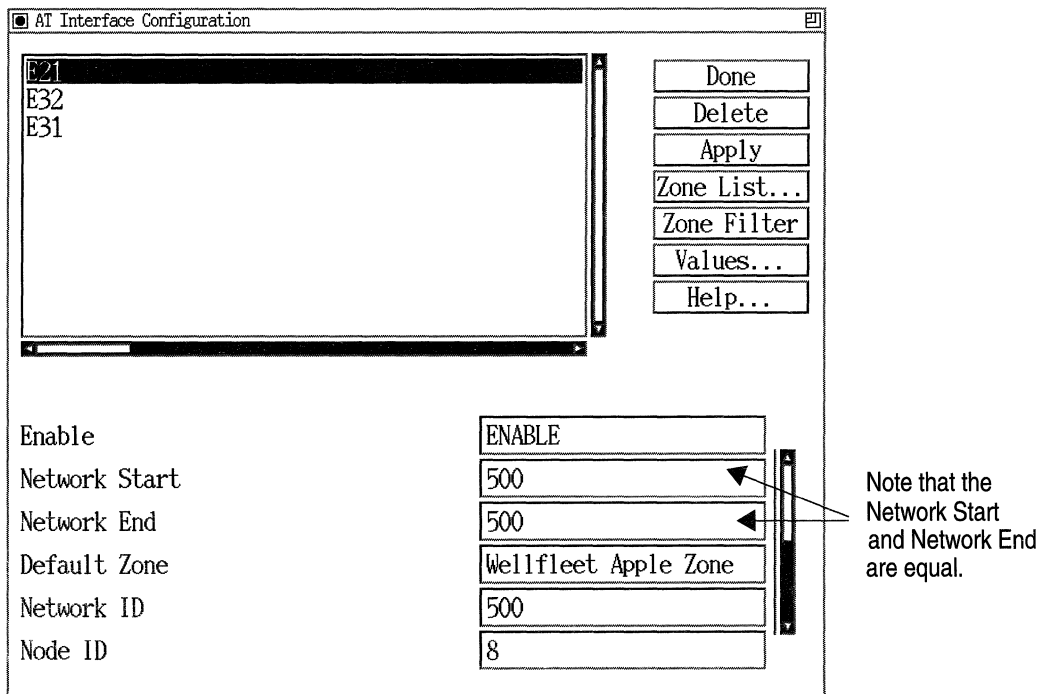


Figure 2-2. AppleTalk Extended Configuration over PPP

Seed Router Interfaces

If you specify a value for the Network Start parameter when enabling an AppleTalk interface, then the interface functions as a seed router. (If you do not set the Network Start parameter, then the interface is nonseed by default.)

In addition, a seed router interface requires you to

- ❑ Specify the Network End parameter.
- ❑ Specify the Default Zone parameter.
- ❑ Define a zone list.

If there are multiple seed routers on the network, all must be configured with the same values.

You *must* configure the interface as a seed router interface if it is the only AppleTalk router on the network. If a seed router already is configured on this network, you can configure this interface to be a nonseed router.

For instructions on editing an AppleTalk interface you have already configured, see “Editing AppleTalk Interface Parameters” in Chapter 3.

Interface Costs

AppleTalk allows you to assign a relative cost value to AppleTalk interfaces. When you specify a cost for an interface, the router adds the cost to the actual hop count advertised in the interface’s RTMP data packets. That is

Total hop count advertised by RTMP packets = Actual hop count to destination network + Interface Cost

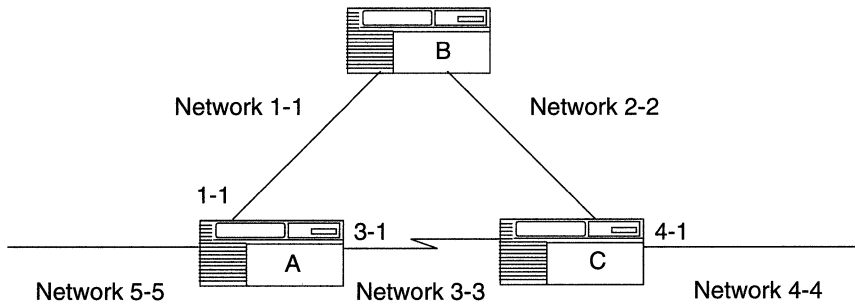
Since the AppleTalk router always chooses the least cost (most direct) path to a destination, you can limit the use of an interface by assigning it a high cost. Figure 2-3 demonstrates how interface cost affects the router’s decision-making process.

In Example 1, when no cost values are assigned to any of the AppleTalk interfaces, Router A always reaches Network 4-4 directly through Router C (because it advertises the least costly route).

As shown in Example 2, if an interface cost of 5 is assigned to Interface 3.1 (which increases the advertised hop count by 5), Router A now reaches Network 4-4 through Router B, because it advertises a lower cost route.

Note: The AppleTalk router does not route to networks that are more than 15 network hops away. Thus, when you assign an interface cost, make certain that the actual hop count plus the interface cost does not exceed the 15-hop restriction.

For instructions on how to set the Cost parameter for an interface, see the section “Editing AppleTalk Interface Parameters” in Chapter 3.



Interface	Cost	Actual Hops to Network 4-4	Hop Count Learned by Interface
1.1	0	2	2
3.1	0	1	1

Example 1. Router A's preferred path to Network 4-4 = 3.1.

Interface	Cost	Actual Hops to Network 4-4	Hop Count Learned by Interface
1.1	0	2	2
3.1	2	1	3

Example 2. Router A's preferred path to Network 4-4 = 1.1.

Figure 2-3. Assigning Circuit Costs to AppleTalk Interfaces

AppleTalk Routing and Bridging on the Same Interface

If you enable both AppleTalk routing and bridging on the same interface, configure a bridge filter on the interface to drop all AppleTalk Phase 2 AARP and DDP packets.

If you do not configure a filter, you may experience problems when you reboot the router. (This is because the bridge enables before the AppleTalk router, causing packets to be bridged before AppleTalk routing starts.)

We suggest creating a filter that specifies a drop (with no log) action on all SNAP packets with Ethertype ranges of 0x809B to 0x809B and 0x80F3 to 0x80F3. The hierarchical menu for the field is as follows:

Data link - 802.2 SNAP - 802.2 SNAP Ethertype

See *Configuring Filter Options for Wellfleet Routers* for more information about how to construct filters for the bridge.

AppleTalk Zone Information

This section describes information specific to configuring AppleTalk zone information.

Adding or Removing AppleTalk Zones

When a router initially learns about a new network, it sends out query packets requesting the network's zone information. The router uses this information to update its zone table. However, because routers query for this information only the first time they learn about a network, any changes later made to the network's zone list do not propagate to other routers on the internet.

To add, remove, or change an AppleTalk zone from an AppleTalk interface's zone list or default zone, follow this procedure:

1. Disable all AppleTalk router interfaces (both Wellfleet and non-Wellfleet) that connect to the network for which the zone name change is being applied.

For example, in Figure 2-4, to add the new zone name Blue to the zone list for Network 1-3, AppleTalk Interfaces 1.1, 1.2, and 1.3 are disabled.

2. Edit the interface's zone list.

Make certain that you change the zone list for any other seed routers on the affected network as well.

3. Wait approximately 10 minutes.

This allows all routers on the AppleTalk internet to time out the network and zone information for the network from their zone lists.

Note: To expedite the aging of a network in an internet containing AURP tunnels, you may need to manually reset AURP connections that have large update intervals.

4. Re-enable the router interfaces that connect to the network.

See "Configuring AppleTalk Zone Lists" in Chapter 3 for instructions.

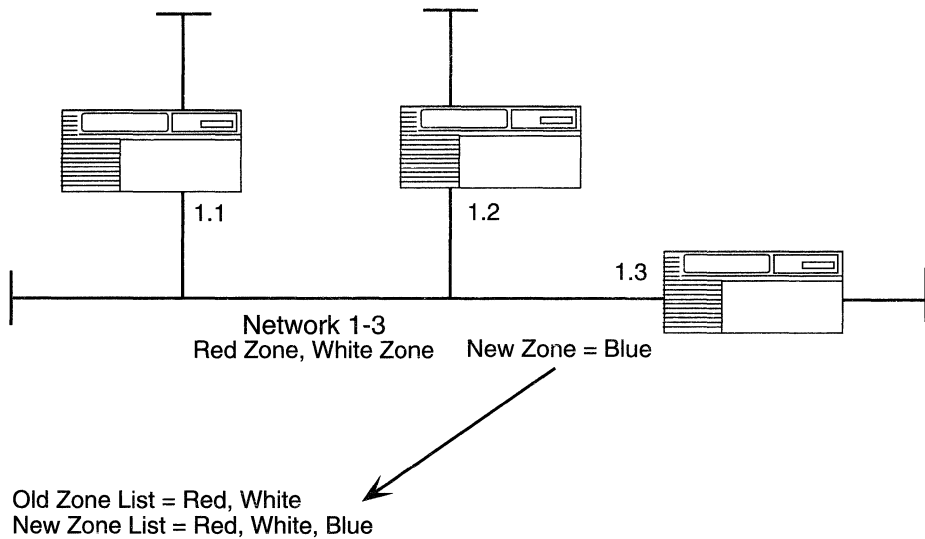


Figure 2-4. Updating an AppleTalk Router's Zone List

Using AppleTalk Zone Filters

Wellfleet AppleTalk zone filters allow network administrators to control the zone information distributed by Wellfleet routers, providing a level of security unavailable through the standard AppleTalk protocol.

The Wellfleet AppleTalk implementation allows you to configure zone filters on a per-interface basis. Zone filters are used to

- Impose network security.

Zone filters can impose security measures by controlling which AppleTalk zones and networks are accessible to end stations on the network.

- Simplify a user's network access.

Zone filters can filter out unwanted zones and reduce the number of zones on a user's Chooser.

You configure zone filters by constructing an Include, Exclude, 5.X Include, or 5.X Exclude zone filter list for an interface.

- ❑ When you configure an Include zone filter list, the interface advertises that it can reach only those zones specified on the list. This type of filter is useful if you want to filter out most of the zones that the router knows about.
- ❑ When you configure an Exclude zone filter list, the interface advertises that it can reach all zones except those specified on the list. This type of filter is useful if you want to filter out only a few of the zones that the router knows about.
- ❑ When you configure a 5.X Include or 5.X Exclude zone filter list, the interface advertises that it can reach only those zones allowed or denied on the list. However, the interface will advertise all networks, regardless of the zones in its zone filter list.

For instructions on configuring zone filters, see “Configuring AppleTalk Zone Filters” in Chapter 3.

How Zone Filters Work

When you configure zone filters on an interface using the Exclude or Include options, the interface no longer sends out zone or network information about the filtered zones.

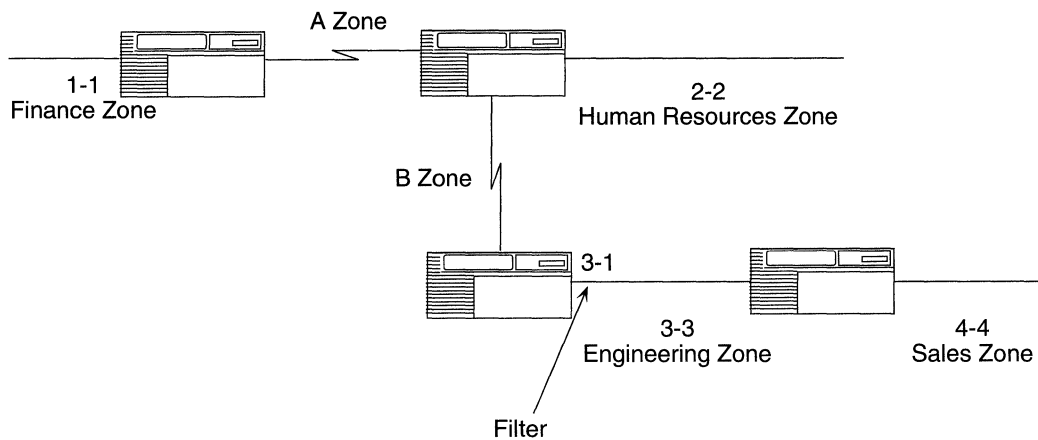
- ❑ RTMP packets generated by the interface do not contain the networks mapped to the filtered zones.
- ❑ ZIP GetZoneList response packets sent out by the interface do not contain the filtered zones.
- ❑ NBP BroadcastRequest packets received by the interface for the filtered zones are not propagated as Forward Request packets or Lookup packets by the interface.
- ❑ NBP Response packets are not routed if the source network number is from a network with a zone that is filtered.

When you are using the Exclude or Include options, be aware that if part of a network’s zone list is filtered on a port, then the entire network is filtered on that port. Within an AppleTalk network, a router

must communicate all zone information about a network if it knows the network's associated zone list.

Note: Communicating a partial zone list for a given network violates the AppleTalk specification and can result in *ZIP storms*. ZIP storms occur when a router continuously broadcasts ZIP requests onto locally attached network segments when it receives conflicting ZIP information from different sources.

For example, the network administrator for the network shown in Figure 2-5 wants to impose a security filter that restricts all AppleTalk users, except those in the Human Resources zone, from accessing the Finance zone. To accomplish this, the administrator adds the Finance zone to the exclude zone filter list for Interface 3.1.



Exclude Zone Filter List	Networks Filtered
Finance	1-1

Figure 2-5. Configuring Zone Filters with the Exclude Option

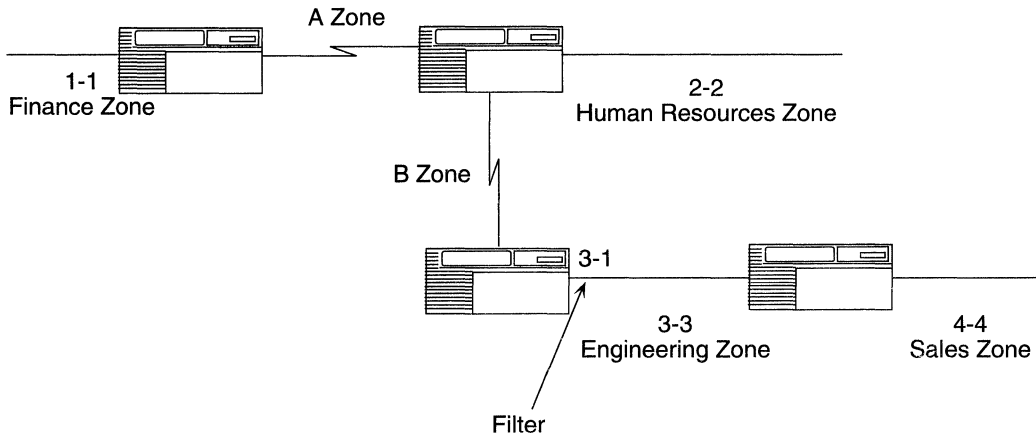
With the filter in place, the RTMP and ZIP packets generated by Interface 3.1 no longer advertise the Finance zone as being reachable. Any NBP BroadcastRequest packets received by the interface for the Finance zone are not propagated as Forward Request packets or Lookup packets. As a result, the services of the Finance zone are no longer visible to end users in the Engineering zone and Sales zone.

When you configure zone filters on an interface using the 5.X Exclude or 5.X Include options, the interface no longer sends out zone information about the filtered zones.

- The interface sends out ZIP Reply packets that do not contain the filtered zones. If all the zones for a network are filtered, then the default zone of the filtering interface represents the network. However, if the network being queried is learned on the receiving interface of the ZIP Request packet, then the ZIP Reply packet must contain the correct zone for that network.
- The interface sends out ZIP GetZoneList Response packets that do not contain the filtered zones.
- The interface does not propagate NBP Broadcast Request packets for the filtered zones as Forward Request packets or Lookup packets.

Note: When you are using the 5.X Exclude or 5.X Include option, the interface advertises all networks. The interface may not advertise the network with the complete zone list because some of the zones are filtered. To avoid different sources advertising conflicting ZIP information, the 5.X Exclude and 5.X Include options do not support loop topologies.

For example, the network administrator for the network shown in Figure 2-6 wants to impose a security filter that restricts all AppleTalk users, except those in the Human Resources zone, from accessing the Finance zone. To accomplish this, the administrator adds the Finance zone to the 5.X Exclude zone filter list for Interface 3.1.



5.X Exclude Zone Filter List	Networks Associated with Zones in the Zone Filter List	Zones Advertised for the Network for ZIP Reply
Finance	1-1	Engineering (Default Zone of Interface 3.1)

Figure 2-6. Configuring Zone Filters with the 5.X Exclude Option

With the filter in place, the ZIP packets generated by Interface 3.1 no longer advertise the Finance zone as being reachable. Any NBP BroadcastRequest packets received by the interface for the Finance zone are not propagated as Forward Request packets or Lookup packets. As a result, the services of the Finance zone are no longer visible to end users in the Engineering zone and Sales zone.

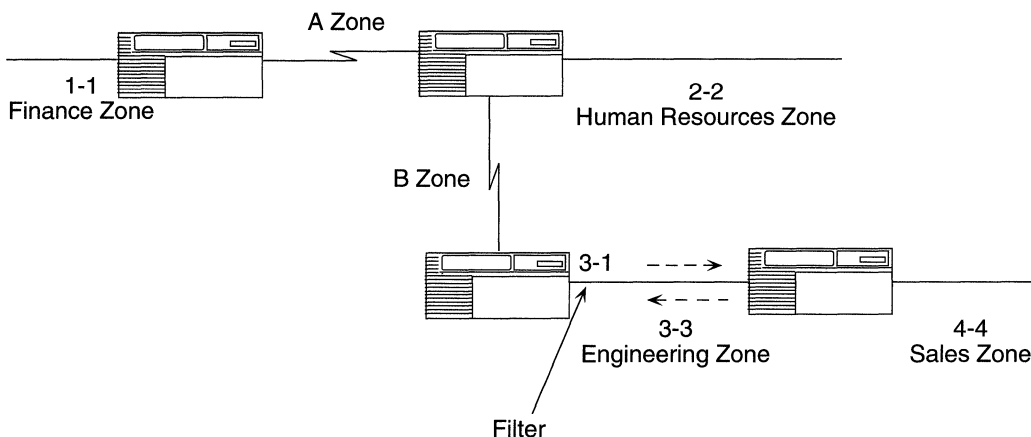
Zone Filter Rules

AppleTalk has several basic filtering rules, or conditions that govern how zone filtering works, depending on whether you use the Exclude, Include, 5.X Exclude, or 5.X Include options, as explained in the following sections.

Zone Filter Rules for the Exclude Option

Rule 1. The AppleTalk router always advertises its own network information.

For example, if the zone filter list shown in Figure 2-7 for Interface 3.1 is expanded to include the Engineering zone, the router would still advertise zone and network information about Network 3-3 through Interface 3.1 in response to a GetZoneList or GetLocalZones command.

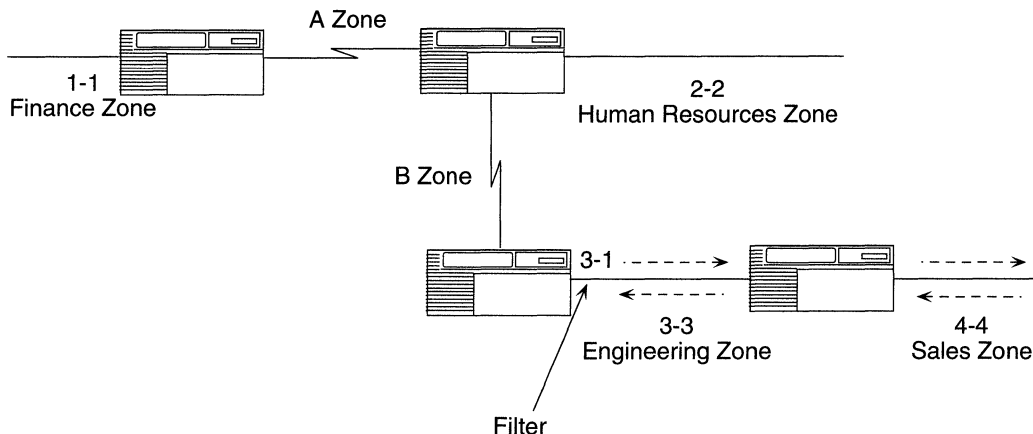


Exclude Zone Filter List	Networks Filtered	Networks not Filtered
Finance	1-1	3-3, due to Rule 1

Figure 2-7. AppleTalk Zone Filters with the Exclude Option: Rule 1

Rule 2. The AppleTalk router always advertises the network information it learns on an interface back out that interface. The AppleTalk router advertises all zone information in response to a GetLocalZones Reply request. The router applies zone filters to corresponding network information in RTMP data packets, ZIP replies, GetZoneList replies, and NBP forward requests.

For example, if the zone filter list shown in Figure 2-8 for Interface 3.1 were expanded to include the Sales zone, the router would still advertise Network 4-4 because it was learned about on Interface 3.1.

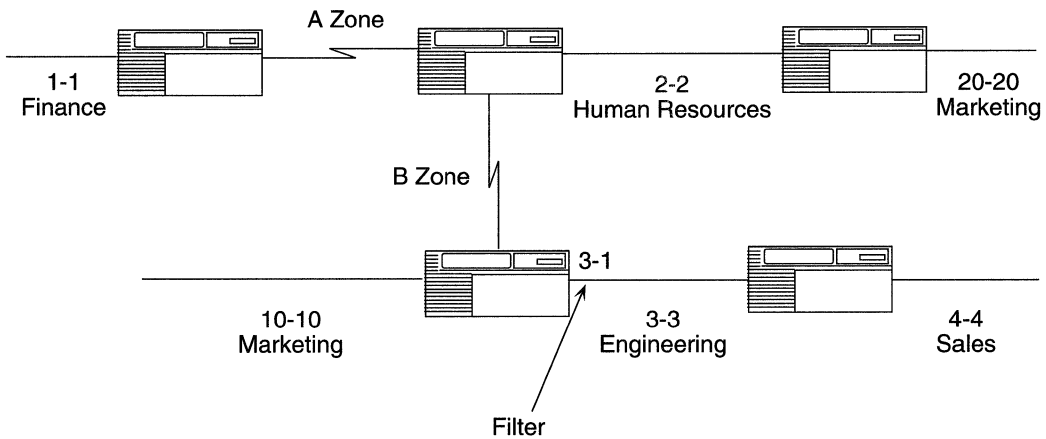


Exclude Zone Filter List	Networks Filtered	Networks not Filtered
Finance, Engineering, Sales	1-1	3-3, due to Rule 1, 4-4 due to Rule 2

Figure 2-8. AppleTalk Zone Filters with the Exclude Option: Rule 2

Rule 3. The AppleTalk router filters out all networks that reside in the filtered zones.

For example, Networks 10-10 and 20-20 shown in Figure 2-9 are both assigned to the Marketing zone. If you add the Marketing zone to the zone filter list for Interface 3.1, then both Network 10-10 and Network 20-20 are filtered out.



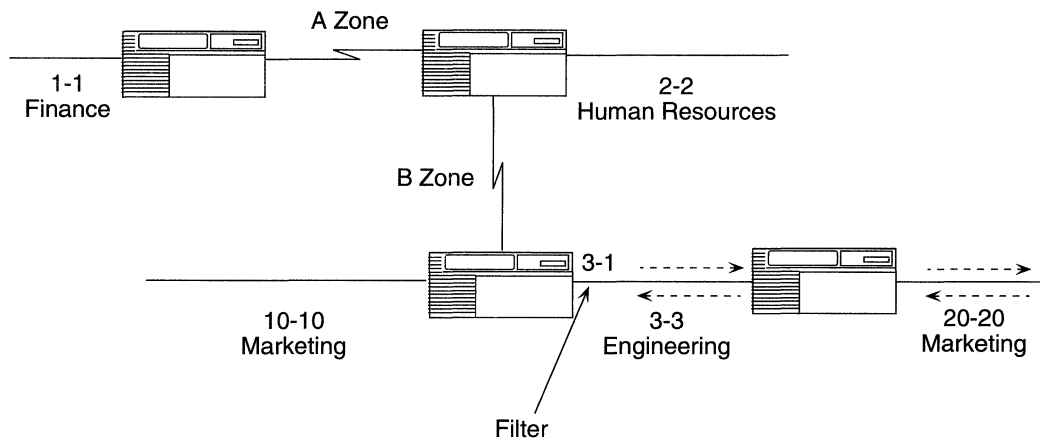
Exclude Zone Filter List	Networks Filtered
Marketing	10-10, 20-20

Figure 2-9. AppleTalk Zone Filters with the Exclude Option: Rule 3

Rule 4. Depending on the network configuration, Rule 3 can be amended by Rule 2.

For example, suppose that the network configuration is like the one shown in Figure 2-10. If you add the Marketing zone to the zone filter list for Interface 3.1, the filter behaves differently than in the previous example.

That is, the interface still filters out Network 10-10, because it belongs to the Marketing zone. However, even though Network 20-20 also belongs to the Marketing zone, it is not filtered out because it was learned about on this same interface (conforming to Rule 2).



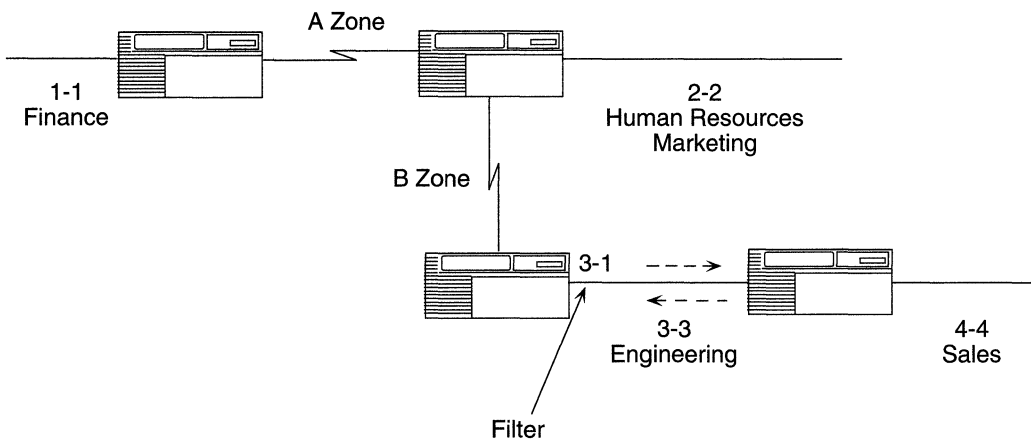
Exclude Zone Filter List	Networks Filtered	Networks not Filtered
Marketing	10-10	20-20, due to Rule 2

Figure 2-10. AppleTalk Zone Filters with the Exclude Option: Rule 4

Zone Filter Rules for the Include Option

Rule 1. The AppleTalk router always advertises its own network information.

For example, if the Include zone filter list shown in Figure 2-11 for Interface 3.1 includes the Human Resources zone, the router would still advertise zones and network information about Network 3-3 out Interface 3.1.

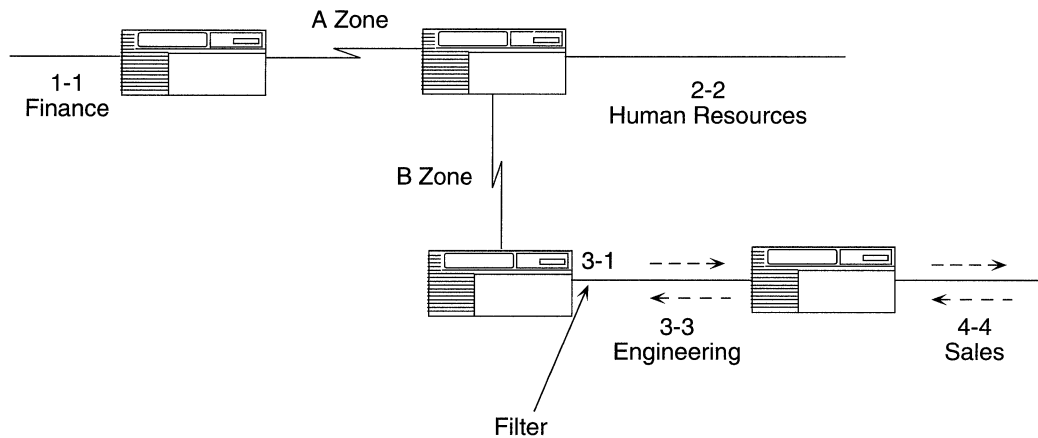


Include Zone Filter List	Networks Advertised	Zones Advertised
Human Resources	2-2 (in Include list)	Human Resources
	3-3 (Rule 1)	Engineering

Figure 2-11. AppleTalk Zone Filters with the Include Option: Rule 1

Rule 2. The AppleTalk router always advertises the network information it learns on an interface back out the interface.

For example, if the Include zone filter list shown in Figure 2-12 for Interface 3.1 includes the Human Resources zone, the router would still advertise zone and network information about Network 4-4 out Interface 3.1.

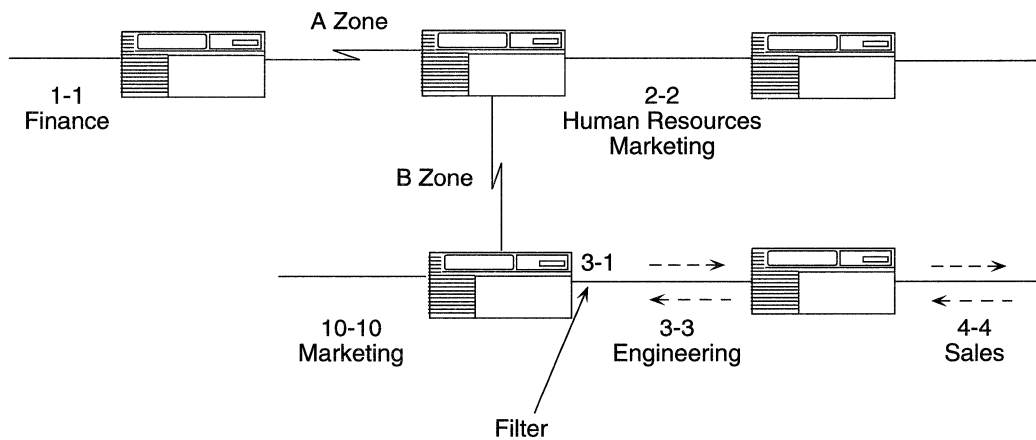


Include Zone Filter List	Networks Advertised	Zones Advertised
Human Resources	2-2 (in Include list)	Human Resources
	3-3 (Rule 1)	Engineering
	4-4 (Rule 2)	Sales

Figure 2-12. AppleTalk Zone Filters with the Include Option: Rule 2

Rule 3. The AppleTalk router advertises all network and zone information for networks that reside in the Include zone list.

For example, if the Include zone filter list for Interface 3.1 includes the Human Resources zone, and Network 2-2 is associated with the Human Resources and Marketing zones, the router would advertise all zones assigned to Network 2-2 out Interface 3.1 (Figure 2-13).



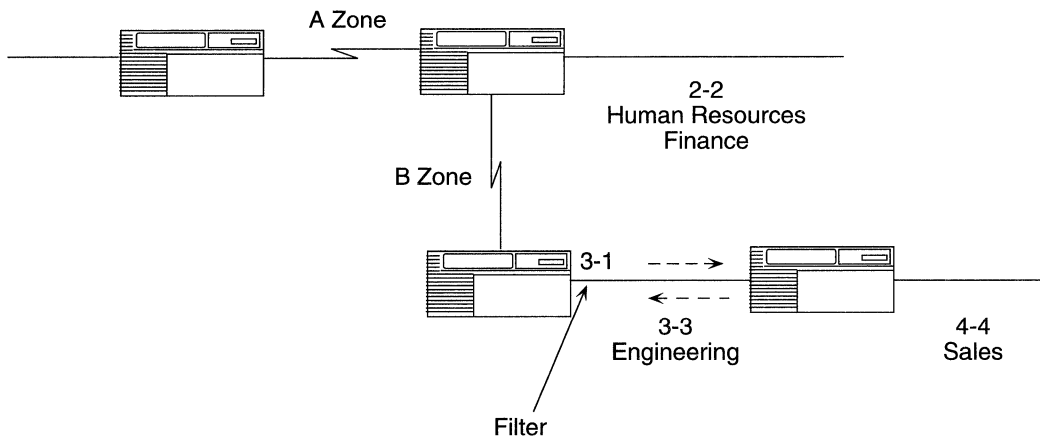
Include Zone Filter List	Networks Advertised	Zones Advertised
Human Resources	2-2 (in Include list)	Human Resources Marketing (Rule 3)
	3-3 (Rule 1)	Engineering
	4-4 (Rule 2)	Sales

Figure 2-13. AppleTalk Zone Filters with the Include Option: Rule 3

Zone Filter Rules for the 5.X Exclude Option

Rule 1. The AppleTalk router always advertises its own network information.

For example, if the 5.X Exclude zone filter list shown in Figure 2-14 for Interface 3.1 includes the Finance and Engineering zones, the router would still advertise zone and network information about Network 3-3 out through Interface 3.1.

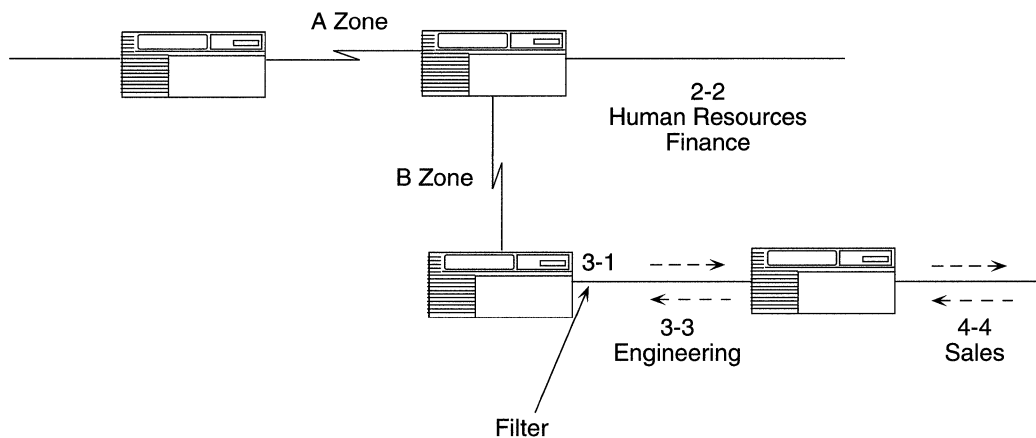


5.X Exclude Zone Filter List	Networks Advertised	Zones Advertised
Finance, Engineering	2-2	Human Resources (not in 5.X Exclude list)
	3-3	Engineering (Rule 1)

Figure 2-14. AppleTalk Zone Filters with the 5.X Exclude Option: Rule 1

Rule 2. The AppleTalk router always advertises the network information it learns on an interface back out the interface.

For example, if the 5.X Exclude zone filter list shown in Figure 2-15 for Interface 3.1 includes the Finance, Engineering, and Sales zones, the router would still advertise zone and network information about Network 4-4 out through Interface 3.1.

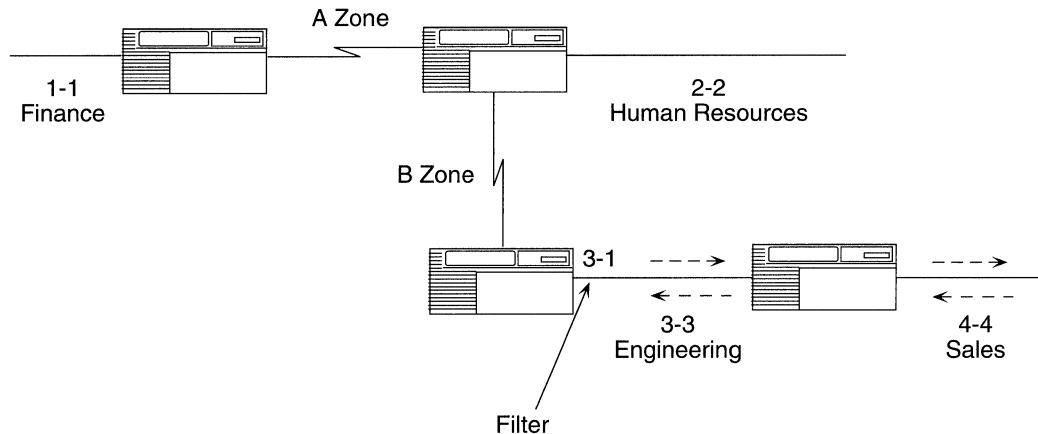


5.X Exclude Zone Filter List	Networks Advertised	Zones Advertised
Finance, Engineering, Sales	2-2	Human Resources (not in 5.X Exclude list)
	3-3	Engineering (Rule 1)
	4-4	Sales (Rule 2)

Figure 2-15. AppleTalk Zone Filters with the 5.X Exclude Option: Rule 2

Rule 3. The AppleTalk router advertises all networks. If the 5.X Exclude zone filter list specifies all of the zones associated with a network, the router would advertise that network with the default zone of the filtering interface.

For example, if the 5.X Exclude zone filter list for Interface 3.1 includes the Finance, Engineering, and Sales zones, the router would still advertise Network 1-1 out Interface 3.1, except that the router would advertise the default zone of Interface 3.1, Engineering, with Network 1.1 (Figure 2-16).



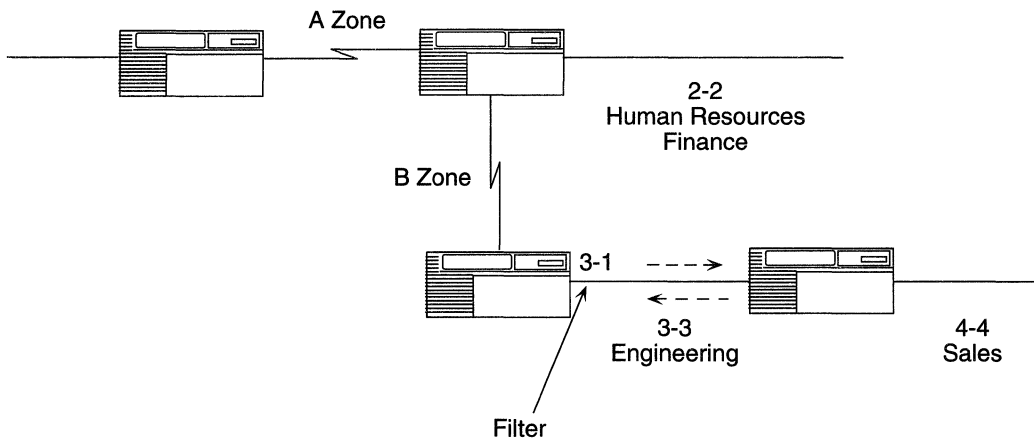
5.X Exclude Zone Filter List	Networks Advertised	Zones Advertised
Finance, Engineering, Sales	2-2	Human Resources (not in 5.X Exclude list)
	3-3	Engineering (Rule 1)
	4-4	Sales (Rule 2)
	1-1	Engineering (Default Zone of Interface 3.1, Rule 3)

Figure 2-16. AppleTalk Zone Filters with the 5.X Exclude Option: Rule 3

Zone Filter Rules for the 5.X Include Option

Rule 1. The AppleTalk router always advertises its own network information.

For example, if the 5.X Include zone filter list shown in Figure 2-17 for Interface 3.1 includes the Human Resources zone, the router would still advertise zone and network information about Network 3-3 out through Interface 3.1.

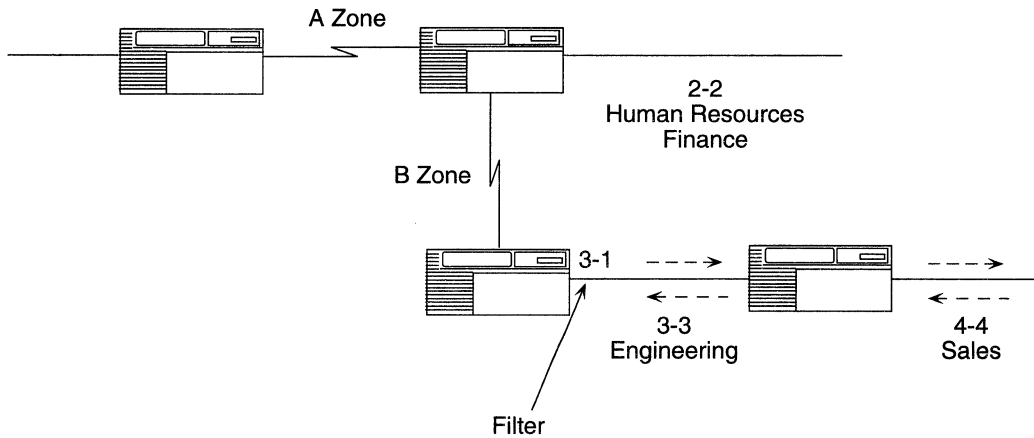


5.X Include Zone Filter List	Networks Advertised	Zones Advertised
Human Resources	2-2	Human Resources (in 5.X Include list)
	3-3	Engineering (Rule 1)

Figure 2-17. AppleTalk Zone Filters with the 5.X Include Option: Rule 1

Rule 2. The AppleTalk router always advertises the network information it learns on an interface back out the interface.

For example, if the 5.X Include zone filter list shown in Figure 2-18 for Interface 3.1 includes the Human Resources zone, the router would still advertise zone and network information about Network 4-4 out Interface 3.1.

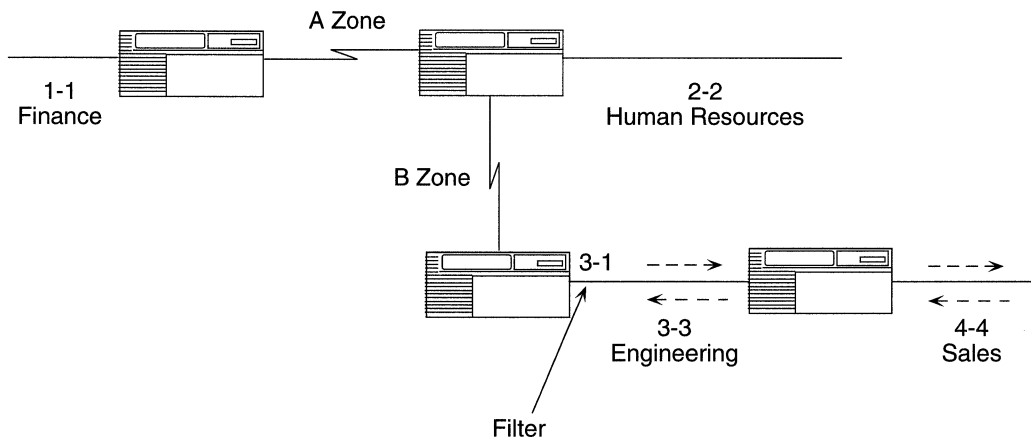


5.X Include Zone Filter List	Networks Advertised	Zones Advertised
Human Resources	2-2	Human Resources (in 5.X Include list)
	3-3	Engineering (Rule 1)
	4-4	Sales (Rule 2)

Figure 2-18. AppleTalk Zone Filters with the 5.X Include Option: Rule 2

Rule 3. The AppleTalk router advertises all networks. If the 5.X Include zone list specifies none of the zones associated with a network, the default zone of the filtering interface is advertised with that network.

For example, if the 5.X Include zone filter list for Interface 3.1 includes the Human Resources zone, the router would still advertise Network 1-1 out through Interface 3.1, except that the router would advertise the default zone of Interface 3.1, Engineering, with Network 1-1 (Figure 2-19).



5.X Include Zone Filter List	Networks Advertised	Zones Advertised
Human Resources	2-2	Human Resources (in 5.X Include list)
	3-3	Engineering (Rule 1)
	4-4	Sales (Rule 2)
	1-1	Engineering (Default Zone of Interface 3.1, Rule 3)

Figure 2-19. AppleTalk Zone Filters with the 5.X Include Option: Rule 3

AppleTalk Network Topology Information

This section describes information specific to AppleTalk network topologies.

Configuring the AppleTalk Router to Source Route over Token Ring Networks

The Wellfleet AppleTalk router supports routing over Token Ring networks that contain one or more Source Routing bridges.

In a Source Routing network, every end station that sends out a frame supplies the frame with the necessary route descriptors so that it can be source routed across the network. Thus, in order for routers to route packets across a Source Routing network, they must act like end stations, supplying route descriptors for each packet before they send the packet out onto the network (Figure 2-20).

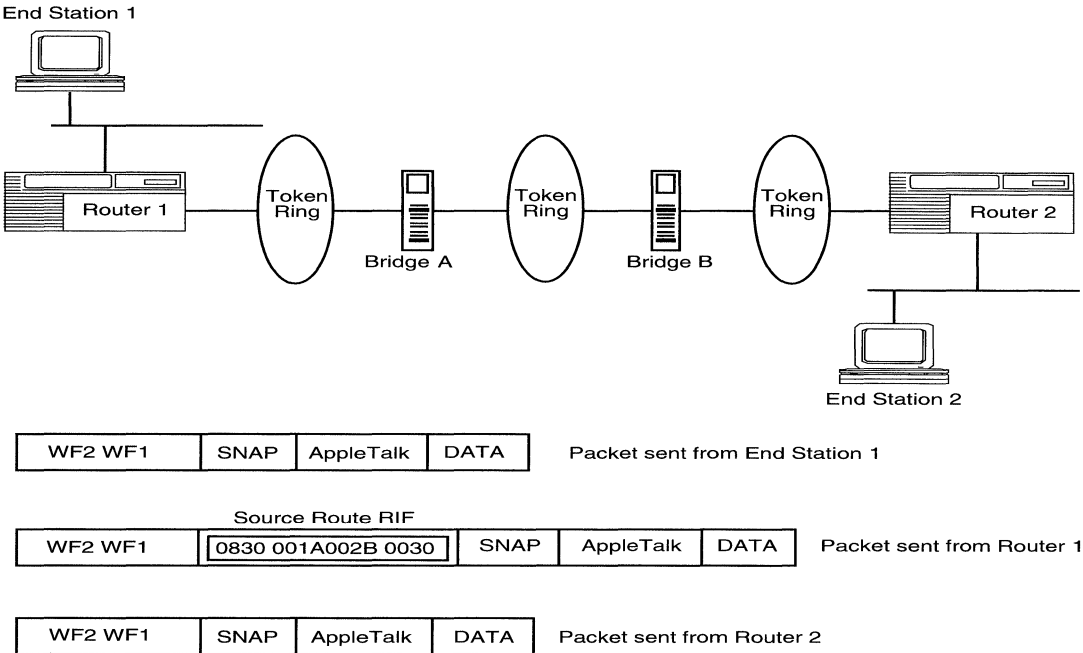


Figure 2-20. AppleTalk Routers Source Routing across a Token Ring Network

With end node support enabled, whenever a Wellfleet AppleTalk router receives a packet and determines that the packet's next hop is located across a Source Routing network, the router does the following:

- Adds the necessary RIF information to the packet's MAC header
- Sends the packet out onto the network where it is source routed toward the next hop

Upon receiving the packet from the Token Ring network, the peer router strips off the RIF field and continues to route the packet toward the destination network address.

You configure source route end node support for each individual routing protocol on a per-circuit basis. See “Editing AppleTalk Interface Parameters” in Chapter 3 for instructions.

Configuring the AppleTalk Router in a Non-Fully Meshed Frame Relay Topology

If an AppleTalk interface connects to a non-fully meshed Frame Relay topology, and you want all of the routers connecting to the Frame Relay network to learn about each other, then you must

- Set the Split Horizon parameter for this interface to Disable.
- Statically configure the Network ID and Node ID for each AppleTalk interface connecting to the Frame Relay network.

A non-fully meshed network is a WAN in which one or more routers do not have logically direct connections to all other routers. Figure 2-21 shows a sample non-fully meshed network with Split Horizon disabled. (A fully meshed network is a WAN in which all routers have a logically direct connection to each other.)

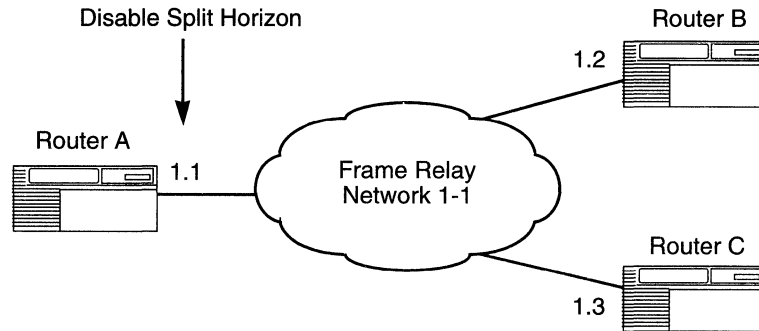


Figure 2-21. AppleTalk Routers in a Non-Fully Meshed Frame Relay Topology

For example, if you enable Split Horizon on Interface 1.1, then Router A learns about Router B and Router C; however, Router B does not learn about Router C (and vice versa). For all routers to learn about each other, you must disable Split Horizon for Interface 1.1, and you must statically configure Network ID and Node ID for Interfaces 1.1, 1.2, and 1.3.

See “Editing AppleTalk Interface Parameters” in Chapter 3 for instructions on how to set the Split Horizon, Network ID, and Node ID parameters.

How Can I Reduce Excess Routing Traffic on a Large AppleTalk Network?

If you are adding Wellfleet AppleTalk routers to a large internet (for example, one that contains more than 200 routers and networks), consider the following network configuration tips to reduce the amount of routing traffic on your network:

- Keep the physical network topology as hierarchical as possible. Using a functional (organizational) hierarchy isolates groups on the network and reduces the amount of excess broadcast traffic.

- ❑ Reduce the number of devices on a single physical network (or bridged network) by dividing the internet into a greater number of networks. This also helps to reduce the amount of traffic that is broadcast to all nodes on the network.
- ❑ Limit the amount of Name Binding Protocol traffic on the network; avoid configuring the same zone on multiple networks. Instead, keep the ratio of zones to networks as close to 1-1 as possible.

Can I Add My Wellfleet AppleTalk Router to a Transitional Network?

You can add the Wellfleet AppleTalk router to a transitional network (one that generates both AppleTalk Phase 1 and AppleTalk Phase 2 traffic). For performance reasons, however, we do not recommend it.

If you choose to add the Wellfleet AppleTalk router to a transition network, you must consider the following configuration requirements:

- ❑ An AppleTalk Phase 1 to Phase 2 transition router must reside on the internet.
- ❑ All defined network ranges must consist of a single number; for example, 1-1 is a valid network range, while 1-5 is invalid.
- ❑ You can only specify a single zone name for each network.

AURP Information

Before configuring AURP on a router, you must configure AppleTalk on at least one of the router's circuits. Once you have configured at least one AppleTalk interface, you can use AURP to create a wide area link between two or more AppleTalk networks.

Unlike other AppleTalk protocols, AURP does not require you to configure any circuits for AURP services. Use AURP to configure the router's interface to another router that is set up for AURP services (known as the *peer IP address*).

When Should I Use AURP?

You may find AURP desirable when faced with one of the following scenarios:

- ❑ You want to link two or more AppleTalk networks across an existing IP internet.
- ❑ You want to reduce the amount of RTMP traffic generated on an AppleTalk network.
- ❑ You have a large AppleTalk network that is approaching the 15-hop AppleTalk limit.

The following sections provide general guidelines for understanding and using some of the most important AURP parameters.

Setting the Update Rate

You should carefully consider how often you want to update your AppleTalk network. A smaller update rate (for example, 10 seconds) causes routers to converge more quickly on a network, making most changes to the network appear quickly in the Chooser application. Though a smaller update rate provides users with quick access to any zones added to a network, it may also prove to be expensive (for example, in a dial-on-demand configuration, or over Frame Relay).

A larger update rate (for example, one hour) causes routers to converge less quickly, making changes to the network appear less quickly in the Chooser application. Zones may still appear in the Chooser even though their associated networks are no longer reachable across the tunnel. Also, new network information does not become accessible until the update occurs. This could prove frustrating for some users.

To change the AURP update rate, select **Protocols**→**AppleTalk**→**AURP**→**Interfaces**, then set the value in the Update Rate field. See Chapter 3 for details.

AURP uses the following packets to update its AppleTalk routing information:

- ❑ Routing Information Update (RI-Upd)
- ❑ Routing Information Request (RI-Req)
- ❑ Routing Information Response (RI-Rsp)
- ❑ Routing Information Acknowledgment (RI-Ack)
- ❑ Zone Information Request (ZI-Req)
- ❑ Zone Information Response (ZI-Rsp)

Setting the Last Heard From Timeout

The AppleTalk router uses the Last Heard From Timeout parameter to periodically check that the other end of the connection is up. If the router does not receive an RI-Upd, RI-Rsp, or ZI-Rsp packet within the Last Heard From Timeout period, it sends a Tickle Request and expects a Tickle Acknowledgment.

If the router does not receive the acknowledgment within the Command Timeout period, the router repeats its Tickle Request up to the Command Retries amount. If the router does not receive an acknowledgment, the connection is closed.

A large Last Heard From Timeout value may postpone the discovery of a failed connection by an exterior router. If you are using AURP to create an AppleTalk wide area network, you may want to increase the value to an hour (3600 seconds) if the WAN is relatively stable. However, if you know a network may be unstable, you may want to decrease this value to as little as 30 seconds to ensure that you are aware of any disruptions in service.

Setting the Hop Count Reduction

Enable hop count reduction only when the diameter of your network is greater than 15 hops.

If you use hop count reduction, make sure you do not create a network loop like the one shown in Figure 2-22. Hop count reduction can only take place across two AppleTalk networks that are linked by an AURP tunnel.

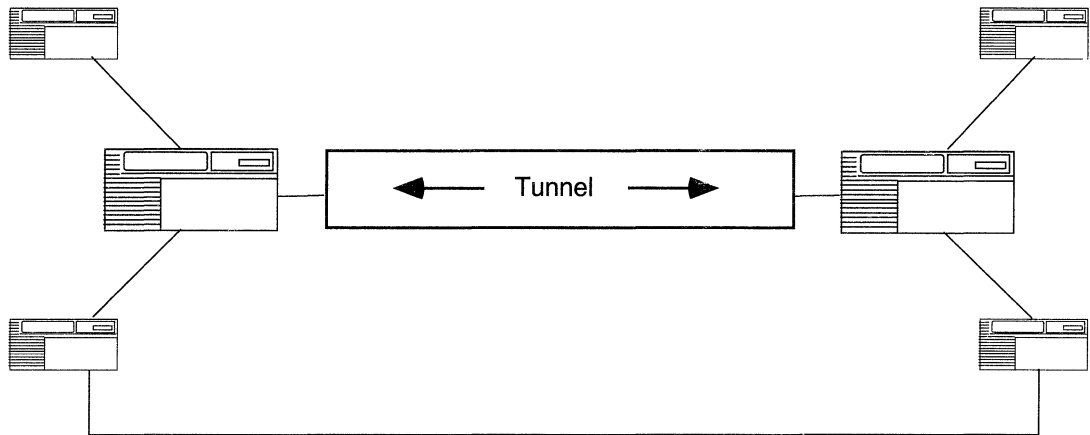


Figure 2-22. Network Loop

Setting the Command Timeout and Command Retries

The Command Timeout specifies the amount of time to wait for an acknowledgment before retrying the command. The Command Retries parameter specifies how many attempts are made before the connection is considered closed. For a typical network (that is, a network that is relatively stable), the recommended Command Timeout value is 3 seconds. If a network is busy or requires long-distance travel, larger values may be required.

Setting Zone Filters

See the section “AppleTalk Zone Information” in this chapter. AURP zone filters work the same way as AppleTalk zone filters.

Setting the Interface Cost

See the section “Interface Costs” in this chapter. The AURP interface cost parameter works the same way as the AppleTalk Interface Cost parameter.

AppleTalk Dial-on-Demand Routing

In addition to supporting standard AURP functionality, Wellfleet software enables users to combine AURP and IP dial-on-demand routing to provide dial-on-demand routing for AppleTalk networks. This service allows the Wellfleet router to activate the physical connection for a circuit only when retransmitting data over the line, thus significantly reducing your line costs.

The dial-on-demand service enables more efficient use of modems. Because modems usually require between 30 seconds and a minute to make a connection, AURP’s default timeout and retry values must be increased if you intend to use a modem.

To enable AppleTalk dial-on-demand routing with Wellfleet software, use Site Manager to modify the following configuration parameters:

1. Configure all the necessary parameters for IP dial-on-demand routing on the WAN interface being used for AppleTalk dial-on-demand routing.
2. Configure the AURP connection(s) for traffic using the WAN interface configured for dial-on-demand routing with the following parameters defined:
 - a. Modify the AppleTalk timeout and retry intervals (the default is three tries with a 3-second interval) to slightly exceed the

connect delay characteristics of the modem being used for dial-on-demand routing.

For example, if the modem takes 45 seconds to connect, set the timeout and retry parameters so that the AURP connection does not time out before the modem connects; for example, eight tries with an 8-second interval between tries (a total of 64 seconds, which exceeds the 45-second modem timeout).

- b. Set the AURP Update Rate timer to a large value to prevent topology change information from initiating a dial-on-demand session.

A small value (for example, 5 minutes) could potentially result in a call every 5 minutes, depending on the stability of the network. A larger value (for example, 24 hours) results in fewer calls due to routing updates, but also greatly increases the amount of time before the peer router (and other routers in its local internet) learns about network changes over the tunnel.

- c. Increase the AURP Last Heard From Timeout interval to a high value to prevent Tickle packets from initiating a dial-on-demand connection. The AURP connection attempts to send a Tickle if it has not heard from the peer within this interval. A Last Heard From Timeout of 24 hours results in (at least) one call per day.

For more information on configuring dial-on-demand services, see *Customizing Dial Services*.

Chapter 3

Editing AppleTalk Parameters

Once you have enabled an AppleTalk interface, you use Site Manager to edit AppleTalk parameters and customize AppleTalk services.

This chapter describes how to use Site Manager to

- ❑ Edit AppleTalk global parameters
- ❑ Edit AppleTalk interface parameters
- ❑ Configure AppleTalk zone lists
- ❑ Change the AppleTalk Default Zone
- ❑ Configure AppleTalk zone filters
- ❑ Select the Name Binding Protocol interface
- ❑ Globally delete AppleTalk
- ❑ Edit AURP parameters

Accessing AppleTalk Parameters

This chapter describes how to edit, or customize, AppleTalk parameters for AppleTalk interfaces configured on the router.

Note: The instructions in this chapter are based on the assumption that you have already configured at least one AppleTalk interface. If you have *not* yet configured an AppleTalk interface, or want to add additional AppleTalk interfaces, see *Configuring Wellfleet Routers*.

You access all AppleTalk parameters from the Configuration Manager window shown in Figure 3-1 (refer to *Configuring Wellfleet Routers* for instructions on accessing this window).

For each AppleTalk parameter, this chapter describes the Wellfleet default setting, all valid setting options, the parameter function, instructions for setting the parameter, and the MIB Object Identification information.

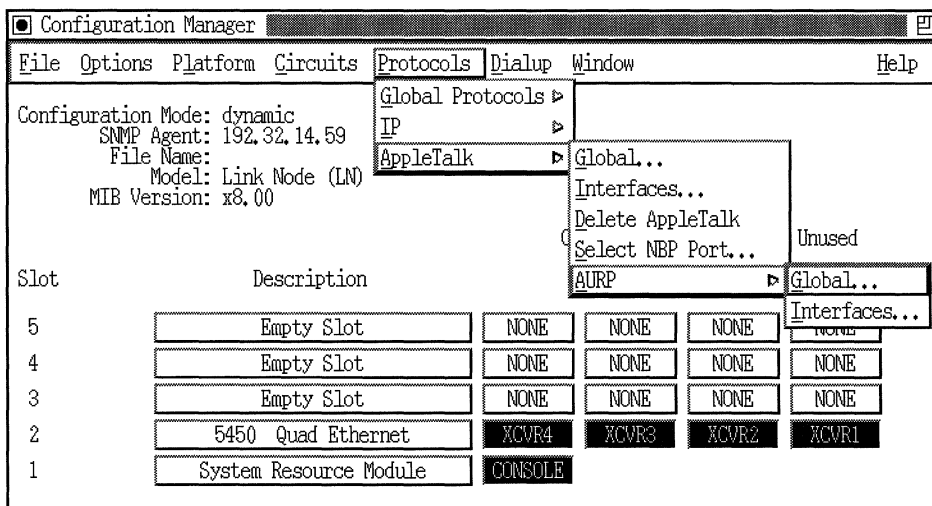


Figure 3-1. Configuration Manager Window

Editing the AppleTalk Global Parameter

To edit the AppleTalk global parameter, begin at the Configuration Manager window and proceed as follows:

1. Select Protocols→AppleTalk→Global.

The AppleTalk Global Parameters window appears (Figure 3-2).

2. Set the Enable parameter to Disable or Enable, using the following parameter description as a guide.
3. Click on the OK button to exit the window and save your changes when you are finished.

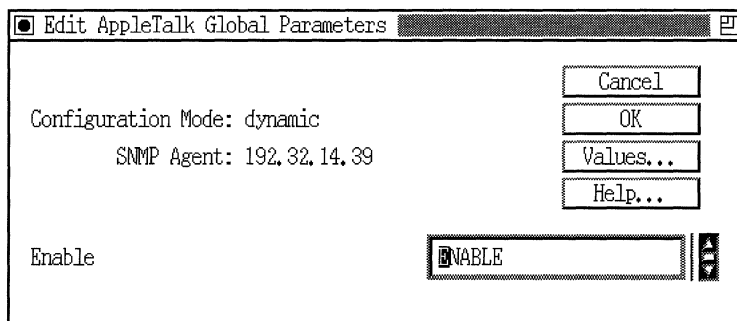


Figure 3-2. AppleTalk Global Parameters Window

Parameter:	Enable
Default:	Enable
Options:	Enable Disable
Function:	Enables or disables AppleTalk on the entire Wellfleet router.
Instructions:	Set to Disable if you want to disable AppleTalk globally.
MIB Object ID:	1.3.6.1.4.1.18.3.5.4.1#2

Editing AppleTalk Interface Parameters

To edit an AppleTalk interface, begin at the Configuration Manager window; then proceed as follows:

1. Select Protocols→AppleTalk→Interfaces to display the AppleTalk Interface Configuration window (Figure 3-3).
2. Click on the interface you want to edit.
3. Edit those parameters you want to change, using the following parameter descriptions as a guide.
4. Click on the Apply button to implement your changes.
5. Click on the Done button to exit the window.

Note: When you reconfigure an interface in dynamic configuration mode, AppleTalk restarts on that interface.

Parameter:	Enable
Default:	Enable
Options:	Enable Disable
Function:	Enables or disables AppleTalk on this interface.
Instructions:	Set to Disable only if you want AppleTalk disabled on this interface (for example, if you are editing the interface's zone list).
MIB Object ID:	1.3.6.1.4.1.18.3.5.4.3.1#2

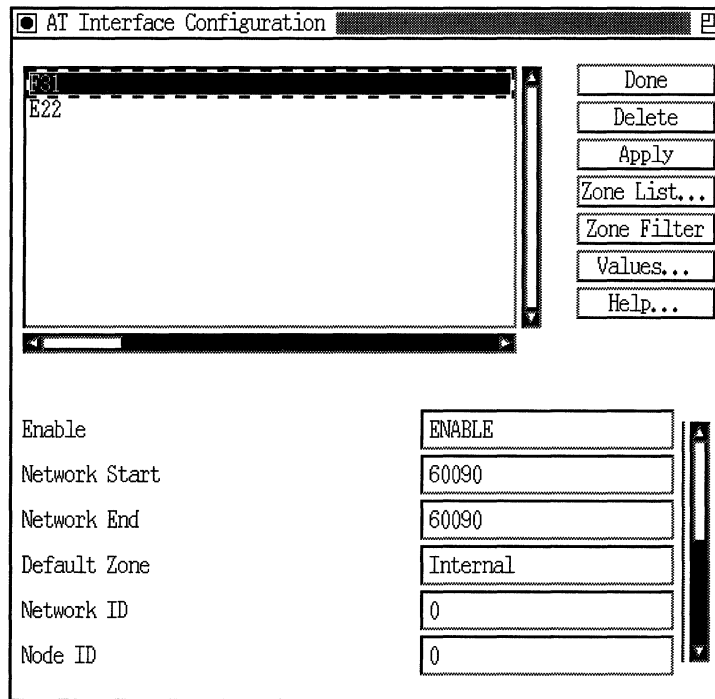


Figure 3-3. AppleTalk Interface Configuration Window

Parameter:	Network Start
Default:	0
Options:	0 to 65,279
Function:	Specifies the lower boundary (minimum) of the range of network numbers that are available for use by nodes on the network to which this interface connects.
	This parameter's setting determines whether this interface functions as a seed or nonseed router.

- Instructions:** To configure this interface as a nonseed router, accept the default, 0.
- To configure this interface as a seed router, specify the Network Start as follows:
- If this is the only seed router on the network, determine the network range for this interface and enter the lower boundary network number here.
 - If there are already seed routers on the network, enter the *same* Network Start value that is configured on all other seed routers.

MIB Object ID: 1.3.6.1.4.1.18.3.5.4.3.1#13

Note: If you specify a Network Start other than the default 0, then (1) the router becomes a seed router automatically, and (2) you must also specify values for the Network End and Default Zone parameters.

Parameter: Network End

Default: 0

Options: 0 to 65,279

Function: Specifies the upper boundary (maximum) of the range of network numbers that are available for nodes to use on the network to which this interface connects.

This parameter is used with the Network Start parameter to help define a seed router. *If you have not specified a Network Start, this parameter is ignored.*

Instructions: If this interface is configured as a nonseed router, then accept the default, 0.

If this interface is configured as a seed router, then specify the Network End as follows:

- If this is the only seed router on the network, determine the network range for this interface and enter the upper boundary network number here.
- If there are already seed routers on the network, enter the *same* Network End value that is configured on all other seed routers.

MIB Object ID: 1.3.6.1.4.1.18.3.5.4.3.1#14

Parameter: Default Zone

Default: None

Options: Any valid zone name

Function: Specifies the name of the Default Zone where all new nodes are assigned when they first start up on this network.

This parameter is used with the Network Start and Network End parameters to help define a seed router. *If you have not specified a Network Start, this parameter is ignored.*

Instructions: If this interface is configured as a nonseed router, then leave this field blank.

If this interface is configured as a seed router, then specify the Default Zone as follows:

- If this is the only seed router on the network, enter any valid Default Zone name.
- If there are already seed routers on the network, enter the *same* Default Zone name configured on all other seed routers.

A valid zone name can consist of up to 32 characters and can include any character except an asterisk (*).

MIB Object ID: 1.3.6.1.4.1.18.3.5.4.3.1#15

Note: To enter nonprintable characters into the Default Zone parameter, type `\xx`, where `xx` is the two-hexadecimal-digit representation of each nonprintable character, as shown in AppleTalk character set mapping. (Refer to the Character Set Mapping table in *Inside AppleTalk*, Second Edition.) The router counts the `\xx` as a single character. If you want to enter a literal backslash (`\`), enter two backslashes (`\\`). You cannot enter nonprintable characters if you are using dynamic configuration mode. For more information about dynamic configuration mode, see *Configuring Wellfleet Routers*.

Parameter: Network ID

Default: 0

Options: 0 to 65,279

Function: Identifies the network number of the network to which this interface connects.

Instructions: We recommend accepting the default, 0. When you accept the default, the router dynamically acquires a Network ID and Node ID for the interface during startup (thus ensuring that the AppleTalk address for this interface is unique within the network).

If you change the default value, make certain that the number you specify is within the correct network range. The router then uses the Network ID that you specify.

MIB Object ID: 1.3.6.1.4.1.18.3.5.4.3.1#12

Note: If the AppleTalk address (Network ID.Node ID) matches that of any other node on the internet, the interface is automatically disabled.

Parameter: Node ID

Default: 0

Options: 0 to 253

Function: Identifies the node number assigned to this interface.

Instructions: We recommend accepting the default, 0. When you accept the default, the router dynamically acquires a Network and Node ID for the interface during startup (thus ensuring that the AppleTalk address for this interface is unique within the network).

If you change the default value, the router uses the Node ID you specify.

MIB Object ID: 1.3.6.1.4.1.18.3.5.4.3.1#11

Parameter: Interface Cost

Default: 0 hops

Options: 0 to 15 hops

Function: Specifies the additional number of hops (cost) added to the hop-count distance of every network advertised.

Instructions: If you want to limit the use of an interface, assign a high cost. If you do not want to limit the use of an interface, assign a low cost.

MIB Object ID: 1.3.6.1.4.1.18.3.5.4.3.1#79

Parameter: Checksum Enable

Default: Disable

Options: Enable | Disable

Function: Enables or disables the calculation of the DDP checksum for packets *originated* by the AppleTalk router on this interface.

With checksumming enabled, the AppleTalk router calculates and includes a 16-bit checksum in the headers of DDP datagrams that it originates. With checksumming disabled, the router inserts a value of 0 into DDP datagrams that it originates.

This parameter has no effect on incoming packets. If the router receives a packet containing a checksum, it verifies the checksum value.

Instructions: We recommend accepting the default value, Disable. If this circuit contains excess noise, you can enable checksumming to ensure packet integrity.

MIB Object ID: 1.3.6.1.4.1.18.3.5.4.3.1#6

Parameter: TR End Station

Default: Disable

Options: Enable | Disable

Function: Specifies whether this interface is enabled for Source Routing end station support.

Instructions: Set to Enable if (1) this interface is a Token Ring circuit and (2) if Source Routing is enabled on the AppleTalk routers in this ring.

MIB Object ID: 1.3.6.1.4.1.18.3.5.4.3.1#7

Parameter: WAN MAC Address

Default: None

Options: Any valid MAC address

Function: Specifies the Frame Relay or SMDS broadcast address for this interface.

Instructions: If this interface is of circuit type Frame Relay or SMDS, enter its broadcast address. Note that the length of the address you specify here must be correct for the circuit type. For example, for a Frame Relay circuit with 2-byte DLCIs, the WAN broadcast address you specify must be 2 bytes long.

MIB Object ID: 1.3.6.1.4.1.18.3.5.4.3.1#10

Parameter: WAN Broadcast Address

Default: None

Options: Any valid broadcast address

Function: Specifies the Frame Relay or SMDS broadcast address for this interface.

Instructions: If this interface is of circuit type Frame Relay or SMDS, enter its broadcast address. Note that the length of the address you specify here must be correct for the circuit type. For example, for a Frame Relay circuit with 2-byte DLCIs, the WAN broadcast address you specify must be 2 bytes long.

MIB Object ID: 1.3.6.1.4.1.18.3.5.4.3.1#80

Parameter:	Enable Split Horizon
Default:	Enable
Options:	Enable Disable
Function:	Specifies whether AppleTalk Split Horizon is enabled or disabled for Frame Relay interfaces.
Instructions:	Accept the default, Enable, unless this AppleTalk interface connects to a non-fully meshed Frame Relay topology. If this interface does connect to a non-fully meshed Frame Relay topology, reset to Disable so that the network does not split at the partial mesh. See the section “Configuring the AppleTalk Router in a Non-Fully Meshed Frame Relay Topology” in Chapter 2 for more information.
MIB Object ID:	1.3.6.1.4.1.18.3.5.4.3.1#81

Configuring AppleTalk Zone Lists

This section describes how to add zones to or delete them from an AppleTalk interface’s zone list.

Note that the instructions in this section tell you to wait at least 10 minutes after you edit an AppleTalk interface’s zone list before you re-enable the interface. The 10-minute waiting period allows the other routers on the network to time out the old network and zone information from their zone information tables.

Note: Because editing an AppleTalk interface’s zone list can affect your network performance, refer to the section “Adding or Removing AppleTalk Zones” in Chapter 2 before proceeding.

Adding Zones to a Zone List

To add a zone to the AppleTalk router's zone list, begin at the Configuration Manager window shown in Figure 3-1; then proceed as follows:

1. Select Protocols→AppleTalk→Interfaces.

The AppleTalk Interface Configuration window appears (Figure 3-3).

2. Set the Enable parameter to Disable.
3. Click on the Apply button.

This disables the AppleTalk interface so that you can edit its zone list.

4. Click on the Zone List button.

The AppleTalk Zone Configuration window appears (Figure 3-4). It lists the zones already configured for the router. You can add or delete zones from this window.

Note: Do *not* add the Default Zone to the interface's zone list.

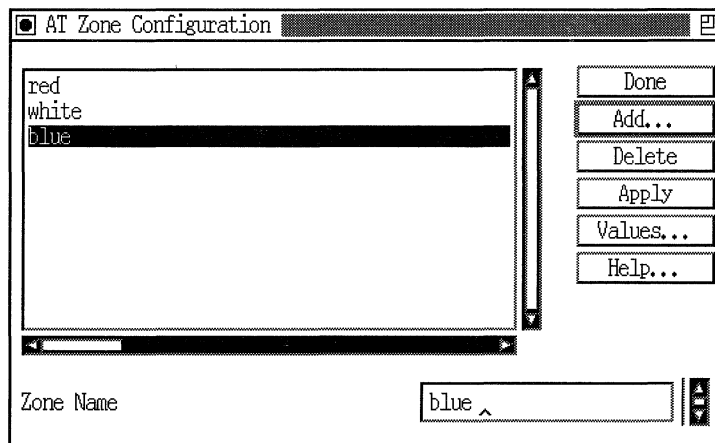


Figure 3-4. AppleTalk Zone Configuration Window

5. Click on the Add button.
6. Specify the zone name at the Zone Name parameter, using the following parameter description as a guide.
7. Click on the OK button.

The AppleTalk Zone Configuration window now lists the zone you added.
8. Click on the Done button to exit the AppleTalk Zone Configuration window.
9. Wait 10 minutes to allow all routers on the network to time out the network and zone information from their zone information tables.
10. Set the Enable parameter to Enable.
11. Click on the Apply button.

This re-enables the AppleTalk interface and implements your changes to the zone list.
12. Click on the Done button to exit the AppleTalk Interface Configuration window.

Parameter:	Zone Name
Default:	None
Options:	Any valid zone name. A valid zone name contains from 1 to 32 characters and can include any character except for the asterisk (*).
Function:	Identifies the other zones (besides the Default Zone) that are specified for this network.
Instructions:	Enter a zone name.
MIB Object ID:	1.3.6.1.4.1.18.3.5.4.4.1#4

Note: To enter nonprintable characters into the Zone Name parameter, type `\xx`, where `xx` is the two-hexadecimal-digit representation of each nonprintable character, as shown in AppleTalk character set mapping. (Refer to the Character Set Mapping table in *Inside AppleTalk*, Second Edition.) The router counts the `\xx` as a single character. If you want to enter a literal backslash (`\`), enter two backslashes (`\\`). You cannot enter nonprintable characters if you are using dynamic configuration mode. For more information about dynamic configuration mode, see *Configuring Wellfleet Routers*.

Deleting Zones from the Zone List

To delete a zone from the AppleTalk router's zone list, begin at the Configuration Manager window shown in Figure 3-1; then proceed as follows:

1. Select Protocols→AppleTalk→Interfaces.

The AppleTalk Interface Configuration window appears (Figure 3-3).

2. Set the Enable parameter to Disable.
3. Click on the Apply button.

This disables the AppleTalk interface so that you can edit its zone list.

4. Click on the Zone List button.

The AppleTalk Zone Configuration window appears (Figure 3-4).

5. Click on the zone you want to delete.
6. Click on the Delete button.

The AppleTalk Zone Configuration window no longer lists the zone you deleted.

7. Click on the Done button to exit the AppleTalk Zone Configuration window.

8. Wait 10 minutes to allow all routers on the network to time out the network and zone information from their zone information tables.
9. Set the Enable parameter to Enable.
10. Click on the Apply button.

This re-enables the AppleTalk interface and implements your changes to the zone list.
11. Click on the Done button to exit the AppleTalk Interface Configuration window.

Changing the AppleTalk Default Zone

When you initially configure an AppleTalk interface, you specify a Default Zone for the interface only if you want it to function as a seed router. If the interface functions as a nonseed router, then you leave the Default Zone parameter field blank.

To change the Default Zone for a seed router interface, begin at the Configuration Manager window shown in Figure 3-1; then proceed as follows:

1. Select Protocols→AppleTalk→Interfaces.

The AppleTalk Interface Configuration window appears (Figure 3-3).
2. Set the Enable parameter to Disable.
3. Click on the Apply button.

This disables the AppleTalk interface so that you can change the default zone.
4. Click on an AppleTalk interface to select it.
5. Specify a new Default Zone at the Default Zone parameter.
6. Click on the Apply button.
7. Click on the Done button to exit the window.

8. Wait 10 minutes to allow all routers on the network to time out the network and zone information from their zone information tables.
9. Set the Enable parameter to Enable.
10. Click on the Apply button.

This re-enables the AppleTalk interface and implements your changes to the zone list.
11. Click on the Done button to exit the AppleTalk Interface Configuration window.

Configuring AppleTalk Zone Filters

This section describes how to add or delete zone filters from an interface's zone filter list.

Note: Any changes you make to the zone filter list may not be immediately apparent to other AppleTalk routers on the network. For example, if you add a new filter, it may take time for other routers to learn about the new network information, or to time out the network information that is no longer being advertised because of the new filter.

Because the way you configure zone filters may affect your network performance, refer to the section "Using AppleTalk Zone Filters" in Chapter 2 before proceeding.

Adding Zones to the Zone Filter List

To add AppleTalk zones to an AppleTalk interface's zone filter list, begin at the Configuration Manager window shown in Figure 3-1; then proceed as follows:

1. Select Protocols→AppleTalk→Interfaces.

The AppleTalk Interface Configuration window appears (Figure 3-3).

2. Click on the Zone Filter button.

The AppleTalk Zone Filter Configuration window appears (Figure 3-5). It lists the zone filters already configured for the router.

3. Click on the Add button.

The AppleTalk Zone Filter autoconfiguration window appears (Figure 3-6).

4. Specify the zone you want to filter at the Zone Name parameter.

The Zone Name parameter is described in the section “Adding Zones to a Zone List” in this chapter.

5. Click on the OK button.

The AppleTalk Zone Filter Configuration window now lists the zone filter you added. The zone filter type automatically defaults to Exclude. See the section “Editing the Zone Filter List” in this chapter for instructions on changing the zone filter type.

6. Click on the Done button to save your changes and exit the window.

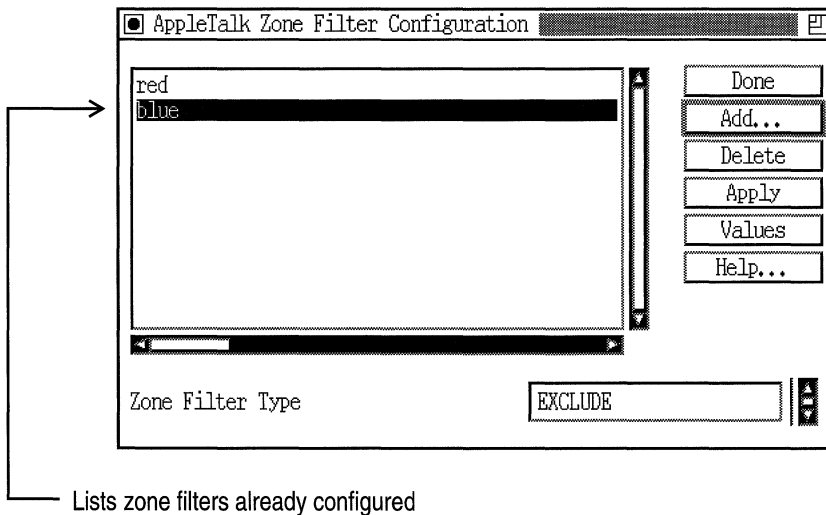


Figure 3-5. AppleTalk Zone Filter Configuration Window

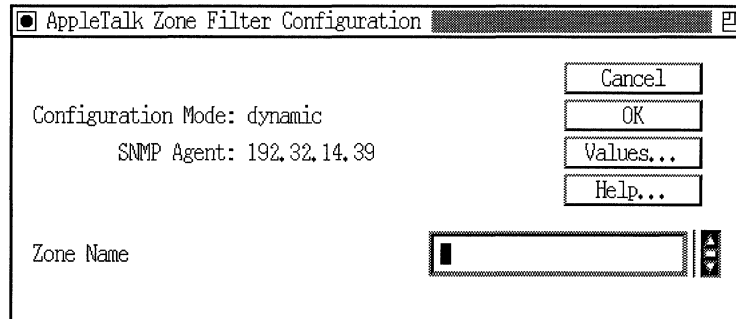


Figure 3-6. AppleTalk Zone Filter Autoconfiguration Window

Editing the Zone Filter List

A zone filter list can be an Exclude zone filter list or an Include zone filter list. Also, you can configure a zone filter list to partially deny or allow zones, using the 5.X Exclude and 5.X Include options.

Note: By default, the zone filter list type is set to Exclude.

When you configure an exclude zone filter list, the interface advertises that it can reach all zones *except* those specified on the list. This type of filter is useful if you want to filter out only a few of the zones that the router knows about.

When you configure an include zone filter list, the interface advertises that it can reach only those zones specified on the list. This type of filter list is useful if you want to filter out most of the zones that the router knows about.

When you configure a zone filter list using the 5.X Include or 5.X Exclude options, the interface advertises that it can reach only those zones you allow on the list. The interface will always advertise the networks associated with the zones in the zone filter list.

For more information about zone filters, see Chapter 2.

To change the zone filter list type, begin at the Configuration Manager window shown in Figure 3-1; then proceed as follows:

1. Select Protocols→AppleTalk→Interfaces.

The AppleTalk Interface Configuration window appears (Figure 3-3).

2. Click on the Zone Filter button.

The AppleTalk Zone Filter Configuration window appears (Figure 3-5). It lists the zone filters already configured for the router. The Zone Filter Type parameter reflects the zone filter type as either exclude or include.

3. Set the Zone Filter Type parameter to Exclude, Include, 5.X Include, or 5.X Exclude, as appropriate.

The Zone Filter Type parameter is described following these instructions.

4. Click on the Apply button to implement your changes.
5. Click on the Done button to exit the AppleTalk Zone Filter Configuration window.

Parameter: Zone Filter Type

Default: Exclude

Options: Include, Exclude, 5.X Include, 5.X Exclude

Function: Specifies the filter action.

If you set this parameter to Exclude, then the router excludes the zones on the zone filter list from its zone information table.

If you set this parameter to Include, then the router includes only the zones on the zone filter lists in its zone information table.

If you set this parameter to 5.X Include, then the router includes only those specified zones in its zone information table. The networks associated with these zones will always be advertised.

If you set this parameter to 5.X Exclude, then the router excludes only those specified zones from its zone information table. The networks associated with these zones will always be advertised.

Instructions: Specify Include, Exclude, 5.X Include, or 5.X Exclude, depending on the filter action you desire.

MIB Object ID: 1.3.6.1.4.1.18.3.5.4.3.1#82

Deleting Zones from the Zone Filter List

To delete AppleTalk zones from an AppleTalk interface's zone filter list, begin at the Configuration Manager window shown in Figure 3-1; then proceed as follows:

1. Select Protocols→AppleTalk→Interfaces.

The AppleTalk Interface Configuration window appears (Figure 3-3).

2. Click on the Zone Filter button.

The AppleTalk Zone Filter Configuration window appears (Figure 3-5). It lists the zone filters already configured for the router.

3. Click on the zone you want to delete.

4. Click on the Delete button.

The AppleTalk Zone Filter Configuration window no longer lists the zone.

5. Click on the Done button to exit the AppleTalk Zone Filter Configuration window.

6. Click on the Done button to exit the AppleTalk Interface Configuration window.

Selecting the Name Binding Protocol Interface

When you enable AppleTalk routing services, NBP uses the *first* AppleTalk interface you configure to advertise the router's name on the network.

To specify a different AppleTalk NBP interface, begin at the Configuration Manager window and proceed as follows:

1. Select Protocols→AppleTalk→Select NBP Port. The system displays the AppleTalk Interfaces window (Figure 3-7).

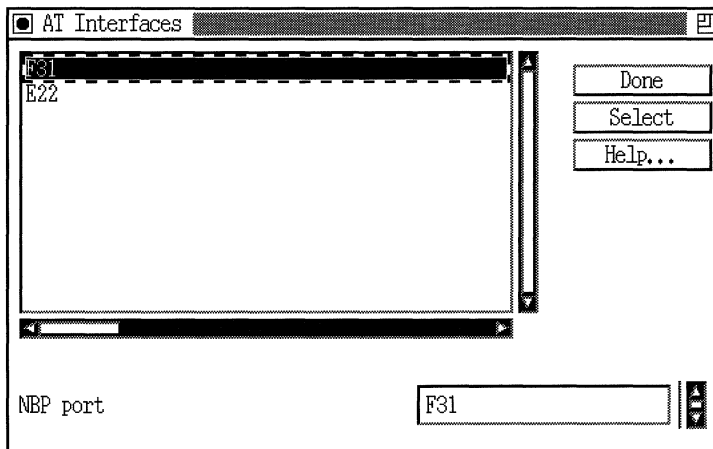


Figure 3-7. AppleTalk Interfaces Window

2. Highlight the AppleTalk interface you want NBP to use to advertise the router's name on the network.
3. Click on the Select button. The interface you selected appears in the NBP port field. For more information about this field, see the parameter description that follows.
4. Click on the Done button to save your changes and exit the window.

Parameter:	NBP Port
Default:	The first AppleTalk interface you configured
Options:	Other configured AppleTalk interfaces
Function:	Indicates the AppleTalk interface you want NBP to use to advertise the router's name on the network.
Instructions:	Accept the default or select a different AppleTalk interface.
MIB Object ID:	1.3.6.1.4.1.18.3.5.4.1#6

Globally Deleting AppleTalk

To delete the AppleTalk routing protocol from all Wellfleet router circuits on which it is currently enabled, begin from the Configuration Manager window shown in Figure 3-1 and proceed as follows:

1. Select Protocols→AppleTalk→Delete AppleTalk.

A window pops up and prompts “Do you REALLY want to delete AppleTalk?”

2. Click on the OK button.

The Configuration Manager window appears. AppleTalk is no longer configured on the Wellfleet router.

Editing AURP Parameters

The following sections describe how to edit AURP global and interface parameters from the AURP Global Parameters window (Figure 3-8) and the AURP Interface Configuration window (Figure 3-9).

Editing AURP Global Parameters

To edit AURP global parameters, begin at the Configuration Manager window and proceed as follows:

1. Select Protocols→AppleTalk→AURP→Global.
The AURP Global Parameters window appears (Figure 3-8).
2. Set the Enable parameter to Disable or Enable, using the following parameter descriptions as a guide.
3. Enter the appropriate IP address (using dotted decimal notation) in the Local IP Address field.

Click on the OK button to exit the window and save your changes when you are finished.

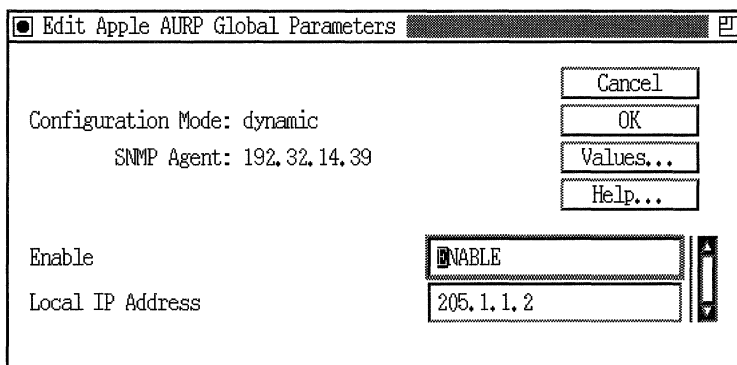


Figure 3-8. AURP Global Parameters Window

Parameter:	Enable
Default:	Enable
Options:	Enable Disable
Function:	Enables or disables AURP on the router.
Instructions:	Set to Disable if you want to globally disable AURP.
MIB Object ID:	1.3.6.1.4.1.18.3.5.4.8#2

Parameter:	Local IP Address
Default:	None
Options:	Any valid 32-bit IP address using dotted decimal notation. For example, 205.1.8.2.
Function:	Identifies an IP interface on the router. This is the IP interface used for AURP.
Instructions:	Enter the IP address of the interface on this router that AURP should use.
MIB Object ID:	1.3.6.1.4.1.18.3.5.4.8#5

Editing AURP Interface Parameters

You use the AURP *interface* parameters to configure an AURP *connection*. To edit an AURP connection, begin at the Configuration Manager window; then proceed as follows:

1. Select Protocols→AppleTalk→AURP→Interfaces to display the AURP Interface Configuration window (Figure 3-9).
2. Click on the interface you want to edit to select it.
3. Edit those parameters you want to change, using the following parameter descriptions as a guide.
4. Click on the Apply button to implement your changes.
5. Click on the Done button to exit the window.

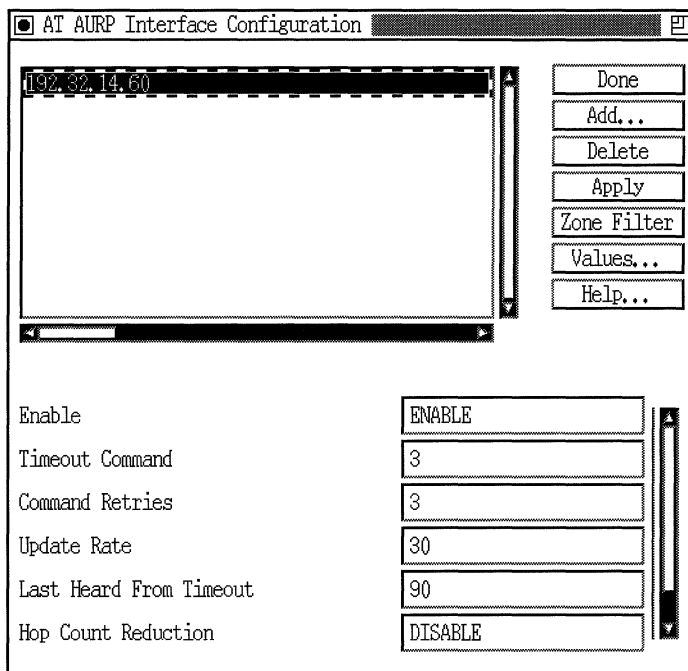


Figure 3-9. AURP Interface Configuration Window

- Parameter:** Enable
- Default:** Enable
- Options:** Enable | Disable
- Function:** Enables or disables AURP on this IP tunnel.
- Instructions:** Set to Enable or Disable to configure AURP for this connection.
- MIB Object ID:** 1.3.6.1.4.1.18.3.5.4.9.1#2

Parameter:	Default Zone
Default:	None
Options:	Any valid zone name
Function:	Specifies the name of the Default Zone used for 5.X Include or 5.X Exclude options.
Instructions:	A valid zone name can consist of up to 32 characters and can include any character except an asterisk (*).
MIB Object ID:	1.3.6.1.4.1.18.3.5.4.3.1#15

Note: To enter nonprintable characters into the Default Zone parameter, type `\xx`, where `xx` is the two-hexadecimal-digit representation of each nonprintable character, as shown in AppleTalk character set mapping. (Refer to the Character Set Mapping table in *Inside AppleTalk*, Second Edition.) The router counts the `\xx` as a single character. If you want to enter a literal backslash (`\`), enter two backslashes (`\\`). You cannot enter nonprintable characters if you are using dynamic configuration mode. For more information about dynamic configuration mode, see *Configuring Wellfleet Routers*.

Parameter:	Command Timeout
Default:	3 seconds
Options:	1 to 1,000 seconds
Function:	Specifies the number of seconds to wait for an acknowledgment before retrying an AURP command.
Instructions:	Specify a value in seconds.
MIB Object ID:	1.3.6.1.4.1.18.3.5.4.9.1#6

Parameter: Command Retries

Default: 3

Options: 1 to 100

Function: Specifies the number of attempts at sending an AURP command.

Instructions: Specify a value for the number of retries.

MIB Object ID: 1.3.6.1.4.1.18.3.5.4.9.1#7

Parameter: Update Rate

Default: 30 seconds

Options: 10 to 604,800 seconds (one week)

Function: Specifies the rate (in seconds) at which routing table updates are sent out on this connection.

Instructions: Specify a value that is a multiple of ten. Refer to the following table for a list of popular values in seconds:

5 minutes	300 seconds
30 minutes	1,800 seconds
1 hour	3,600 seconds
8 hours	28,800 seconds
1 day	86,400 seconds
1 week	604,800 seconds

MIB Object ID: 1.3.6.1.4.1.18.3.5.4.9.1#8

Parameter: Last Heard From Timeout

Default: 90 seconds

Options: 30 to 31,536,000 seconds (one year)

Function: Specifies the number of seconds to wait for an RI-Rsp, RI-Upd, or ZI-Rsp before sending a Tickle request.

Instructions: Specify a value that is a multiple of ten. Refer to the following table for a list of popular values in seconds:

5 minutes	300 seconds
30 minutes	1,800 seconds
1 hour	3,600 seconds
8 hours	28,800 seconds
1 day	86,400 seconds
1 week	604,800 seconds
1 month	2,419,200 seconds

MIB Object ID: 1.3.6.1.4.1.18.3.5.4.9.1#9

Parameter: **Remote AURP IP Address**

Default: None

Options: Any valid 32-bit IP address using dotted decimal notation.

Function: Identifies the peer's IP address for the AURP connection.

Instructions: Enter an IP address using dotted decimal notation.

MIB Object ID: 1.3.6.1.4.1.18.3.5.4.9.1#14

Parameter: **Hop Count Reduction**

Default: Disable

Options: Enable | Disable

Function: Enables or disables hop count reduction.

Instructions: Set to Enable to enable hop count reduction. Set to Disable to disable hop count reduction.

MIB Object ID: 1.3.6.1.4.1.18.3.5.4.9.1#10

Parameter:	Interface Cost
Default:	0 hops
Options:	0 to 15 hops
Function:	Specifies the additional number of hops (cost) added to the hop-count distance of every network advertised.
Instructions:	If you want to limit the use of an interface, assign a high cost. If you do not want to limit the use of an interface, assign a low cost. See the “Interface Costs” section in Chapter 2 for more information.
MIB Object ID:	1.3.6.1.4.1.18.3.5.4.9.1#11

Editing the AURP Zone Filter List

AURP zone filter lists work the same way as regular AppleTalk zone filter lists. For information on how to configure zone filter lists, see the section “Configuring AppleTalk Zone Filters” in this chapter. Refer to the following AURP-specific zone parameters.

Parameter:	Zone Filter Type
Default:	Exclude
Options:	Exclude, Include, 5.X Exclude, 5.X Include
Function:	Controls zone filtering on this AURP connection.
Instructions:	<p>If you set this parameter to Exclude, then the router excludes the zones on the zone filter list from its zone information table.</p> <p>If you set this parameter to Include, then the router includes only the zones on the zone filter lists in its zone information table.</p> <p>If you set this parameter to 5.X Include, then the router includes only those specified zones in its</p>

zone information table. The networks associated with these zones will always be advertised.

If you set this parameter to 5.X Exclude, then the router excludes only those specified zones from its zone information table. The networks associated with these zones will always be advertised.

MIB Object ID: 1.3.6.1.4.1.18.3.5.4.9.1#5

Note: If you delete all the zones listed in the Zone Filter window and then leave the Zone Filter Type value set to Include, AURP no longer advertises any zones. You must set the value back to the default, Exclude.

Parameter: Zone Name

Default: None

Options: Any valid zone name. A valid zone name contains from 1 to 32 characters and can include any character except for the asterisk (*).

Function: Identifies the zone name that should be excluded or included (depending on what you specified for the Zone Filter Type parameter).

Instructions: Enter an appropriate zone name.

MIB Object ID: 1.3.6.1.4.1.18.3.5.4.7.1#6

Index

A

- adding
 - zone filters, 3-17, 3-21
 - zones, 3-13
- address
 - broadcast, 3-11
 - dynamic, 1-1
 - format, 1-2, 3-8
 - hardware, 1-5
 - MAC, 2-2
 - mapping, 1-5, 1-13
 - peer IP, 2-32
 - protocol, 1-5
 - special, 1-9
 - structure, 1-2
- AEP. *See* AppleTalk Echo Protocol
- aging, network, 2-10
- AppleTalk Control Protocol, 2-2
- AppleTalk Echo Protocol, 1-14
- AppleTalk parameters
 - accessing from Site Manager, 3-2
 - AURP, 3-23 to 3-31
 - Checksum Enable, 3-10
 - Command Retries, 3-28
 - Command Timeout, 3-27
 - Default Zone, 3-7, 3-27
 - Enable, 3-3 to 3-4, 3-24, 3-26
 - Enable Split Horizon, 3-12
 - Hop Count Reduction, 3-29
 - Interface Cost, 3-9, 3-30
 - Last Heard From Timeout, 3-28
 - Local IP Address, 3-25
 - NBP Port, 3-23
 - Network End, 3-6
 - Network ID, 3-8
 - Network Start, 3-5
 - Node ID, 3-9
 - Remote AURP IP Address, 3-29
 - TR End Station, 3-10
 - Update Rate, 3-28
 - WAN Broadcast Address, 3-11
 - WAN MAC Address, 3-11
 - Zone Filter Type, 3-20, 3-30
 - Zone Name, 3-14, 3-31
- AppleTalk Phase 1, 1-5, 2-32
- AppleTalk Phase 2, 1-14, 2-32
- AppleTalk Update-Based Routing Protocol
 - dial-on-demand, 2-33
 - specification, 1-20
- AppleTalk Update-based Routing Protocol, 3-31
 - avoiding network loops, 2-35
 - Command Retries, 2-35, 3-28
 - Command Timeout, 2-35, 3-27
 - connection, 2-32
 - Hop Count Reduction, 2-35, 3-29
 - Interface Cost, 2-36, 3-30
 - Last Heard from Timeout, 2-34, 3-28
 - packet, 1-18
 - parameters, 3-23
 - Remote AURP IP Address, 3-29
 - Routing Information packets, 2-34
 - Tickle request, 2-34, 2-37
 - Update Rate, 2-33, 3-28

Wellfleet implementation, 1-14
Zone Filter Type, 3-30
Zone Name, 3-31
ATCP. *See* AppleTalk Control Protocol
AURP. *See* AppleTalk Update-based
Routing Protocol

B

bandwidth, 1-14
buffering updates, 1-19

C

Character Set Mapping table, 3-8, 3-27
Chooser, 1-13, 1-16, 2-11, 2-33
circuit costs, 2-8
Configuration Manager, 3-2
configuring
AURP, 2-32 to 2-36
dial-on-demand, 2-36 to 2-37
Frame Relay topology, 2-30
seed routers, 3-5 to 3-7
Source Routing over Token Ring, 2-29
zone filters, 3-17
converging, 2-33

D

Datagram Delivery Protocol, 1-8 to 1-9,
3-10
datagram format, 1-2
DDP Header, 1-20
DDP. *See* Datagram Delivery Protocol
Default Zone, 1-4, 1-12, 3-7, 3-16, 3-27

deleting
AppleTalk globally, 3-23
zone filters, 3-17, 3-21
zones from zone lists, 3-15
Dial-on-Demand, 2-33, 2-36 to 2-37
diameter, network, 2-35, 3-30
Domain Header, 1-17, 1-18
Domain Identifier, 1-15

E

end stations, 2-29
entity, 1-14
EtherTalk, 1-5
exterior routers, 1-15

F

FDDI. *See* Fiber Distributed Data Interface
Fiber Distributed Data Interface, 1-5
Frame Relay, 2-2, 2-30

G

global parameters, 3-3, 3-24
globally deleting AppleTalk, 3-23

H

hexadecimal symbol, 3-15
hierarchy, network, 2-31
hop count reduction, 1-19 to 1-20, 2-35,
3-29
hop limit, 1-14, 1-19, 2-33

I

Inside AppleTalk, 1-20, 3-8, 3-15, 3-27
Interface Cost, 2-7, 2-8, 2-36, 3-30
interface parameters, 3-4 to 3-12, 3-25 to 3-30
Internet Protocol, 1-15

L

laser printer, 1-14
Last Heard From Timeout, 2-34, 3-28
Link Access protocols, 1-5
LocalTalk, 1-5
loop, network, 2-35

M

MAC header, 2-30

N

Name Binding Protocol, 1-14, 3-22 to 3-23
 packets, 1-13
NBP. *See* Name Binding Protocol
network
 diagram, 1-3
 division of, 2-32
 extended, 1-2 to 1-3, 2-4
 fully meshed, 2-30
 nonextended, 1-2, 2-2
 topology, 2-29 to 2-32
 transition, 2-32
Network ID, 1-8, 2-30, 3-8
Node ID, 1-8, 2-30, 3-9
noise, circuit, 3-10
nonprintable characters, 3-8, 3-15, 3-27

nonseed routers, 1-4, 2-6, 3-5 to 3-6, 3-16

P

packets
 AURP, 1-18
 DDP, 1-9
 NBP, 1-13
 Routing Information, 2-34
 RTMP, 1-10
 ZIP, 1-11 to 1-12
parameters. *See* AppleTalk parameters
Point-to-Point Protocol, 2-2, 2-2 to 2-3
probing, 1-6
protocols
 AppleTalk Address Resolution, 1-5
 AppleTalk Control, 2-2
 AppleTalk Echo, 1-14
 AppleTalk Updated-based Routing, 1-14
 Datagram Delivery, 1-8, 1-9
 Internet, 1-15
 Link Access, 1-5
 list, AppleTalk, 1-5
 Name Binding, 1-14
 Point-to-Point, 2-2 to 2-3
 Routing Table Maintenance, 1-10
 Switched Multimegabit Data Services, 2-2
 User Datagram, 1-17
 WAN Broadcast Address, 2-2
 WAN MAC Address, 2-2
 Zone Information, 1-12

R

Routing Table Maintenance Protocol, 1-10, 1-19
routing tables, 1-9, 3-10, 1-19

RTMP. *See* Routing Table Maintenance Protocol

S

security, 1-14, 1-16, 2-11
seed routers, 1-4, 2-2, 2-4, 2-6, 2-10, 3-5 to 3-6, 3-16
Site Manager. *See also* Windows
sockets, 1-9
Source Routing, 2-29, 3-10
Split Horizon, 2-30, 3-12
static configuration, 1-8
Switched Multimegabit Data Services, 2-2
synchronous encapsulation, 1-5

T

Tickle request, 2-34, 2-37, 3-28
timing out, network, 3-12, 3-17
Token Ring, 2-29, 3-10
TokenTalk, 1-5
traffic, routing, 2-31
tunnel
 connected fully, 1-15 to 1-16
 connected partially, 1-15 to 1-16
 packet forwarded across, 1-17 to 1-18

U

UDP. *See* User Datagram Protocol
Update Rate, 1-19, 2-33, 3-28
Update-based Routing Table Maintenance, 1-19
User Datagram Protocol, 1-17

W

WAN media, 2-2
windows
 AppleTalk Global Parameters, 3-3
 AppleTalk Interface Configuration, 2-4, 2-6, 3-5
 AURP Global Parameters, 3-24
 AURP Interface Configuration, 3-24
 Configuration Manager, 3-2
 Interfaces, 3-22. *See also* Site Manager
 Zone Configuration, 3-13, 3-14
 Zone Filter Autoconfiguration, 3-19
 Zone Filter Configuration, 3-18

Z

ZIP. *See* Zone Information Protocol
zone filter list
 Exclude, 3-19 to 3-20
 Include, 3-19 to 3-20
 5.X Exclude, 3-19 to 3-20
 5.X Include, 3-19 to 3-20
zone filters, 2-36
 adding, 3-17, 3-21
 configuring, 3-17
 deleting, 3-17, 3-21
 description, 2-12
 rules, 2-16
Zone Information Protocol, 1-11 to 1-12
 storm, 2-13
zones
 adding, 2-9
 default zone, 3-16
 default zone lists, 1-4, 1-11
 naming, 3-7, 3-27, 3-31
 removing, 2-9