

Installing

# **Remote Access Concentrator Software for Windows and Windows NT**

Marketing Release 5.1

Part No. 118356-A Rev. A  
September 1997



## **Copyright © 1997 Bay Networks, Inc.**

All rights reserved. Printed in the USA. September 1997.

The information in this document is subject to change without notice. The statements, configurations, technical data, and recommendations in this document are believed to be accurate and reliable, but are presented without express or implied warranty. Users must take full responsibility for their applications of any products specified in this document. The information in this document is proprietary to Bay Networks, Inc.

The software described in this document is furnished under a license agreement and may only be used in accordance with the terms of that license. A summary of the Software License is included in this document.

## **Trademarks**

Optivity and Bay Networks are registered trademarks and Remote Annex, Quick2Config, System 5000, Bay Networks Press, and the Bay Networks logo are trademarks of Bay Networks, Inc.

Microsoft, MS, MS-DOS, Win32, Windows, and Windows NT are registered trademarks of Microsoft Corporation.

All other trademarks and registered trademarks are the property of their respective owners.

## **Restricted Rights Legend**

Use, duplication, or disclosure by the United States Government is subject to restrictions as set forth in subparagraph (c)(1)(ii) of the Rights in Technical Data and Computer Software clause at DFARS 252.227-7013.

Notwithstanding any other license agreement that may pertain to, or accompany the delivery of, this computer software, the rights of the United States Government regarding its use, reproduction, and disclosure are as set forth in the Commercial Computer Software-Restricted Rights clause at FAR 52.227-19.

## **Statement of Conditions**

In the interest of improving internal design, operational function, and/or reliability, Bay Networks, Inc. reserves the right to make changes to the products described in this document without notice.

Bay Networks, Inc. does not assume any liability that may occur due to the use or application of the product(s) or circuit layout(s) described herein.

Portions of the code in this software product are Copyright © 1988, Regents of the University of California. All rights reserved. Redistribution and use in source and binary forms of such portions are permitted, provided that the above copyright notice and this paragraph are duplicated in all such forms and that any documentation, advertising materials, and other materials related to such distribution and use acknowledge that such portions of the software were developed by the University of California, Berkeley. The name of the University may not be used to endorse or promote products derived from such portions of the software without specific prior written permission.

SUCH PORTIONS OF THE SOFTWARE ARE PROVIDED “AS IS” AND WITHOUT ANY EXPRESS OR IMPLIED WARRANTIES, INCLUDING, WITHOUT LIMITATION, THE IMPLIED WARRANTIES OF MERCHANTABILITY AND FITNESS FOR A PARTICULAR PURPOSE.

In addition, the program and information contained herein are licensed only pursuant to a license agreement that contains restrictions on use and disclosure (that may incorporate by reference certain limitations and notices imposed by third parties).

## Bay Networks, Inc. Software License Agreement

**NOTICE:** Please carefully read this license agreement before copying or using the accompanying software or installing the hardware unit with pre-enabled software (each of which is referred to as “Software” in this Agreement). BY COPYING OR USING THE SOFTWARE, YOU ACCEPT ALL OF THE TERMS AND CONDITIONS OF THIS LICENSE AGREEMENT. THE TERMS EXPRESSED IN THIS AGREEMENT ARE THE ONLY TERMS UNDER WHICH BAY NETWORKS WILL PERMIT YOU TO USE THE SOFTWARE. If you do not accept these terms and conditions, return the product, unused and in the original shipping container, within 30 days of purchase to obtain a credit for the full purchase price

**1. License Grant.** Bay Networks, Inc. (“Bay Networks”) grants the end user of the Software (“Licensee”) a personal, nonexclusive, nontransferable license: a) to use the Software either on a single computer or, if applicable, on a single authorized device identified by host ID, for which it was originally acquired; b) to copy the Software solely for backup purposes in support of authorized use of the Software; and c) to use and copy the associated user manual solely in support of authorized use of the Software by Licensee. This license applies to the Software only and does not extend to Bay Networks Agent software or other Bay Networks software products. Bay Networks Agent software or other Bay Networks software products are licensed for use under the terms of the applicable Bay Networks, Inc. Software License Agreement that accompanies such software and upon payment by the end user of the applicable license fees for such software.

**2. Restrictions on use; reservation of rights.** The Software and user manuals are protected under copyright laws. Bay Networks and/or its licensors retain all title and ownership in both the Software and user manuals, including any revisions made by Bay Networks or its licensors. The copyright notice must be reproduced and included with any copy of any portion of the Software or user manuals. Licensee may not modify, translate, decompile, disassemble, use for any competitive analysis, reverse engineer, distribute, or create derivative works from the Software or user manuals or any copy, in whole or in part. Except as expressly provided in this Agreement, Licensee may not copy or transfer the Software or user manuals, in whole or in part. The Software and user manuals embody Bay Networks’ and its licensors’ confidential and proprietary intellectual property. Licensee shall not sublicense, assign, or otherwise disclose to any third party the Software, or any information about the operation, design, performance, or implementation of the Software and user manuals that is confidential to Bay Networks and its licensors; however, Licensee may grant permission to its consultants, subcontractors, and agents to use the Software at Licensee’s facility, provided they have agreed to use the Software only in accordance with the terms of this license.

**3. Limited warranty.** Bay Networks warrants each item of Software, as delivered by Bay Networks and properly installed and operated on Bay Networks hardware or other equipment it is originally licensed for, to function substantially as described in its accompanying user manual during its warranty period, which begins on the date Software is first shipped to Licensee. If any item of Software fails to so function during its warranty period, as the sole remedy Bay Networks will at its discretion provide a suitable fix, patch, or workaround for the problem that may be included in a future Software release. Bay Networks further warrants to Licensee that the media on which the Software is provided will be free from defects in materials and workmanship under normal use for a period of 90 days

from the date Software is first shipped to Licensee. Bay Networks will replace defective media at no charge if it is returned to Bay Networks during the warranty period along with proof of the date of shipment. This warranty does not apply if the media has been damaged as a result of accident, misuse, or abuse. The Licensee assumes all responsibility for selection of the Software to achieve Licensee's intended results and for the installation, use, and results obtained from the Software. Bay Networks does not warrant a) that the functions contained in the software will meet the Licensee's requirements, b) that the Software will operate in the hardware or software combinations that the Licensee may select, c) that the operation of the Software will be uninterrupted or error free, or d) that all defects in the operation of the Software will be corrected. Bay Networks is not obligated to remedy any Software defect that cannot be reproduced with the latest Software release. These warranties do not apply to the Software if it has been (i) altered, except by Bay Networks or in accordance with its instructions; (ii) used in conjunction with another vendor's product, resulting in the defect; or (iii) damaged by improper environment, abuse, misuse, accident, or negligence.

THE FOREGOING WARRANTIES AND LIMITATIONS ARE EXCLUSIVE REMEDIES AND ARE IN LIEU OF ALL OTHER WARRANTIES EXPRESS OR IMPLIED, INCLUDING WITHOUT LIMITATION ANY WARRANTY OF MERCHANTABILITY OR FITNESS FOR A PARTICULAR PURPOSE.

Licensee is responsible for the security of its own data and information and for maintaining adequate procedures apart from the Software to reconstruct lost or altered files, data, or programs.

**4. Limitation of liability.** IN NO EVENT WILL BAY NETWORKS OR ITS LICENSORS BE LIABLE FOR ANY COST OF SUBSTITUTE PROCUREMENT; SPECIAL, INDIRECT, INCIDENTAL, OR CONSEQUENTIAL DAMAGES; OR ANY DAMAGES RESULTING FROM INACCURATE OR LOST DATA OR LOSS OF USE OR PROFITS ARISING OUT OF OR IN CONNECTION WITH THE PERFORMANCE OF THE SOFTWARE, EVEN IF BAY NETWORKS HAS BEEN ADVISED OF THE POSSIBILITY OF SUCH DAMAGES. IN NO EVENT SHALL THE LIABILITY OF BAY NETWORKS RELATING TO THE SOFTWARE OR THIS AGREEMENT EXCEED THE PRICE PAID TO BAY NETWORKS FOR THE SOFTWARE LICENSE.

**5. Government Licensees.** This provision applies to all Software and documentation acquired directly or indirectly by or on behalf of the United States Government. The Software and documentation are commercial products, licensed on the open market at market prices, and were developed entirely at private expense and without the use of any U.S. Government funds. The license to the U.S. Government is granted only with restricted rights, and use, duplication, or disclosure by the U.S. Government is subject to the restrictions set forth in subparagraph (c)(1) of the Commercial Computer Software—Restricted Rights clause of FAR 52.227-19 and the limitations set out in this license for civilian agencies, and subparagraph (c)(1)(ii) of the Rights in Technical Data and Computer Software clause of DFARS 252.227-7013, for agencies of the Department of Defense or their successors, whichever is applicable.

**6. Use of Software in the European Community.** This provision applies to all Software acquired for use within the European Community. If Licensee uses the Software within a country in the European Community, the Software Directive enacted by the Council of European Communities Directive dated 14 May, 1991, will apply to the examination of the Software to facilitate interoperability. Licensee agrees to notify Bay Networks of any such intended examination of the Software and may procure support and assistance from Bay Networks.

**7. Term and termination.** This license is effective until terminated; however, all of the restrictions with respect to Bay Networks' copyright in the Software and user manuals will cease being effective at the date of expiration of the Bay Networks copyright; those restrictions relating to use and disclosure of Bay Networks' confidential information shall continue in effect. Licensee may terminate this license at any time. The license will automatically terminate if Licensee fails to comply with any of the terms and conditions of the license. Upon termination for any reason, Licensee will immediately destroy or return to Bay Networks the Software, user manuals, and all copies. Bay Networks is not liable to Licensee for damages in any form solely by reason of the termination of this license.

**8. Export and Re-export.** Licensee agrees not to export, directly or indirectly, the Software or related technical data or information without first obtaining any required export licenses or other governmental approvals. Without limiting the

foregoing, Licensee, on behalf of itself and its subsidiaries and affiliates, agrees that it will not, without first obtaining all export licenses and approvals required by the U.S. Government: (i) export, re-export, transfer, or divert any such Software or technical data, or any direct product thereof, to any country to which such exports or re-exports are restricted or embargoed under United States export control laws and regulations, or to any national or resident of such restricted or embargoed countries; or (ii) provide the Software or related technical data or information to any military end user or for any military end use, including the design, development, or production of any chemical, nuclear, or biological weapons.

**9. General.** If any provision of this Agreement is held to be invalid or unenforceable by a court of competent jurisdiction, the remainder of the provisions of this Agreement shall remain in full force and effect. This Agreement will be governed by the laws of the state of California.

Should you have any questions concerning this Agreement, contact Bay Networks, Inc., 4401 Great America Parkway, P.O. Box 58185, Santa Clara, California 95054-8185.



LICENSEE ACKNOWLEDGES THAT LICENSEE HAS READ THIS AGREEMENT, UNDERSTANDS IT, AND AGREES TO BE BOUND BY ITS TERMS AND CONDITIONS. LICENSEE FURTHER AGREES THAT THIS AGREEMENT IS THE ENTIRE AND EXCLUSIVE AGREEMENT BETWEEN BAY NETWORKS AND LICENSEE, WHICH SUPERSEDES ALL PRIOR ORAL AND WRITTEN AGREEMENTS AND COMMUNICATIONS BETWEEN THE PARTIES PERTAINING TO THE SUBJECT MATTER OF THIS AGREEMENT. NO DIFFERENT OR ADDITIONAL TERMS WILL BE ENFORCEABLE AGAINST BAY NETWORKS UNLESS BAY NETWORKS GIVES ITS EXPRESS WRITTEN CONSENT, INCLUDING AN EXPRESS WAIVER OF THE TERMS OF THIS AGREEMENT.



## About This Guide

Before You Begin . . . . .	xiii
Conventions . . . . .	xiv
Ordering Bay Networks Publications . . . . .	xv
Bay Networks Customer Service . . . . .	xv
How to Get Help . . . . .	xvi

## Chapter 1

### Overview, Requirements and Online Help

Supported Platforms . . . . .	1-2
Requirements for Server Tools . . . . .	1-2
Security Authentication . . . . .	1-3
Log On Privileges . . . . .	1-3
Requirements for NA and Quick2Config Annex . . . . .	1-4
RACs . . . . .	1-5
Using the RAC Software Online Help System . . . . .	1-5
Starting Online Help . . . . .	1-5
Moving Around Online Help . . . . .	1-6
Exiting Online Help . . . . .	1-6

## Chapter 2

### Installing Remote Access Concentrator Software

Installing the Setup Program . . . . .	2-1
Making Installation Diskettes . . . . .	2-3
Starting the Setup Program . . . . .	2-6
Installing NA . . . . .	2-8
No Previous Version . . . . .	2-8
Previous Version Found . . . . .	2-10
Loading NA . . . . .	2-11
Installing Server Tools . . . . .	2-12
No Previous Version . . . . .	2-12
Previous Version Found . . . . .	2-15
Choosing Remote Access Concentrators . . . . .	2-17
Installing Quick2Config Annex . . . . .	2-21
No Previous Version . . . . .	2-21
Previous Version Found . . . . .	2-23
Loading the Programs . . . . .	2-24
Getting Started with RAC Software . . . . .	2-26



Figure 2-1. Welcome Dialog Box . . . . .	2-2
Figure 2-2. Select Operation Dialog Box . . . . .	2-3
Figure 2-3. Make Floppies Dialog Box . . . . .	2-4
Figure 2-4. Choose Location Dialog Box . . . . .	2-5
Figure 2-5. Choose Directory Dialog Box . . . . .	2-6
Figure 2-6. Install Software Dialog Box . . . . .	2-7
Figure 2-7. Choose Destination Location Dialog Box . . . . .	2-8
Figure 2-8. Choose Directory Dialog Box . . . . .	2-9
Figure 2-9. Overwrite or Install Dialog Box . . . . .	2-10
Figure 2-10. Setup Progress Icons . . . . .	2-11
Figure 2-11. Release Notes Dialog Box . . . . .	2-11
Figure 2-12. Server Tools Choose Destination Location Dialog Box . . . . .	2-13
Figure 2-13. Choose Directory Dialog Box . . . . .	2-14
Figure 2-14. Server Tools Installation Options Dialog Box . . . . .	2-16
Figure 2-15. Select Remote Annex Image Dialog Box . . . . .	2-18
Figure 2-16. Geographic Locations . . . . .	2-19
Figure 2-17. Server Tools Options Dialog Box . . . . .	2-20
Figure 2-18. Release Notes Dialog Box . . . . .	2-20
Figure 2-19. Choose Destination Location Dialog Box . . . . .	2-21
Figure 2-20. Choose Directory Dialog Box . . . . .	2-22
Figure 2-21. Overwrite or Install Dialog Box . . . . .	2-23
Figure 2-22. Setup Progress Icons . . . . .	2-24
Figure 2-23. Release Notes Dialog Box . . . . .	2-25
Figure 2-24. Setup Complete Message Box . . . . .	2-25





## *Tables*

Table 1-1. Supported Platforms. . . . .	1-2
Table 1-2. Workstation Hardware and Software Requirements. . . . .	1-4



# About This Guide

Read this guide if you are using Remote Access Network Software for Windows to configure and manage Bay Networks® Remote Access Concentrators (RACs). This software includes:

- Remote Annex Server Tools for Microsoft® Windows NT® version 3.1
- NA utility 3.1
- Quick2Config Annex version 3.1

You should be familiar with:

- IBM compatible PC terminology and operation
- Windows NT 3.51, Windows NT 4.0, or Windows 95

If you want	Go to
Information about the products being installed, the system resources, and the online help available	<a href="#">Chapter 1</a>
To install NA, Server Tools, and Quick2Config Annex	<a href="#">Chapter 2</a>







## Before You Begin

Before using this guide, you must:

- Provision your lines through your telco service provider
- Install the Remote Access Concentrator

## Conventions

This manual uses the following printing conventions:

Convention:	Represents:
<code>special type</code>	In examples, <code>special type</code> indicates system output.
<b>special type</b>	Bold <b>special type</b> indicates user input.
	In command examples, this notation indicates that pressing  enters the default value.
<b>bold</b>	Bold indicates commands, pathnames, or filenames that must be entered as displayed.
<i>italics</i>	In the context of commands and command syntax, lowercase italics indicate variables for which the user supplies a value.
[ ]	In command dialog, square brackets indicate default values. Pressing  selects this value. Square brackets appearing in command syntax indicate optional arguments.
{ }	In command syntax, braces indicate that one, and only one, of the enclosed value must be entered.
	In command syntax, this character separates the different options available for a parameter.
	Notes provide important information.
	Warnings inform you about conditions that can have adverse effects on processing.
	Cautions notify you about dangerous conditions.



## Ordering Bay Networks Publications

To purchase additional copies of this document or other Bay Networks publications, order by part number from Bay Networks Press™ at the following numbers:

- Phone--U.S./Canada: 888-422-9773
- Phone--International: 510-490-4752
- FAX--U.S./Canada and International: 510-498-2609

The Bay Networks Press catalog is available on the World Wide Web at [support.baynetworks.com/Library/GenMisc](http://support.baynetworks.com/Library/GenMisc). Bay Networks publications are available on the World Wide Web at [support.baynetworks.com/Library/tpubs](http://support.baynetworks.com/Library/tpubs).

## Bay Networks Customer Service

You can purchase a support contract from your Bay Networks distributor or authorized reseller, or directly from Bay Networks Services. For information about, or to purchase a Bay Networks service contract, either call your local Bay Networks field sales office or one of the following numbers:

Region	Telephone number	Fax number
United States and Canada	800-2LANWAN; then enter Express Routing Code (ERC) 290, when prompted, to purchase or renew a service contract  508-916-8880 (direct)	508-916-3514
Europe	33-4-92-96-69-66	33-4-92-96-69-96
Asia/Pacific	61-2-9927-8888	61-2-9927-8899
Latin America	561-988-7661	561-988-7550

Information about customer service is also available on the World Wide Web at [support.baynetworks.com](http://support.baynetworks.com).

## How to Get Help

If you purchased a service contract for your Bay Networks product from a distributor or authorized reseller, contact the technical support staff for that distributor or reseller for assistance.

If you purchased a Bay Networks service program, call one of the following Bay Networks Technical Solutions Centers:

Technical Solutions Center	Telephone number	Fax number
Billerica, MA	800-2LANWAN	508-916-3514
Santa Clara, CA	800-2LANWAN	408-495-1188
Valbonne, France	33-4-92-96-69-68	33-4-92-96-69-98
Sydney, Australia	61-2-9927-8800	61-2-9927-8811
Tokyo, Japan	81-3-5402-0180	81-3-5402-0173



# Chapter 1

## Overview, Requirements and Online Help

This chapter provides an overview of Remote Access Concentrator (RAC) Software for Windows, and the requirements for installing the software. The chapter also describes how to use online help.

Remote Access Concentrator Software for Windows includes three modules:

### Server Tools

**Remote Annex Server Tools for Windows NT** allows you to boot and configure RACs in a Windows NT network. The software includes the expedited remote procedure call daemon (**erpcd**), which runs on the host server and on request from the RAC, downloads operational code and other files. The Server Tools also enable you to use the Windows NT domains to authenticate and authorize RAC users.

### NA Command Line Interface

The **Network Administrator Utility (NA)** enables you to display and configure operating characteristics of a RAC and its ports. The utility also enables you to remotely boot the RAC, upload the RAC operating image before a boot, and broadcast administrative messages to ports on a RAC. The utility can be installed with the Server Tools on the host server and on other Windows platforms on the network.

### Quick2Config Annex

The **Quick2Config Annex** application provides a Microsoft Windows<sup>®</sup> based user interface that you can use to configure, manage and monitor remote access servers in a networked environment. Quick2Config Annex is compatible with the Optivity<sup>®</sup> network management products from Bay Networks. Using the Quick2Config Annex application you can:

- Configure a RAC or group of RACs with an easy-to-use graphical interface
- Retrieve status and statistical information from a RAC or RACs
- Discover RACs on the network

## Supported Platforms

[Table 1-1](#) lists the platforms on which the various components of the RAC software can operate. Note that there can be multiple instances of NA and Quick2Config Annex on the same Windows NT network.

Table 1-1. Supported Platforms

Platform	Server Tools	NA Utility	Quick2Config Annex
Windows NT Server 3.51 or 4.0	Yes	Yes	Yes
Windows NT Workstation 3.51 or 4.0		Yes	Yes
Windows 95		Yes	Yes

## Requirements for Server Tools

Before you install Remote Annex Server Tools for Windows NT, make sure you have the following:

- Windows NT Server version 3.51 or 4.0, configured to support TCP/IP protocol
- Administrative privileges on the server
- At least 10 MB of free disk space on the NTFS drive
- One Windows NT Server client license per RAC
- PC with an Intel 486 (or higher) CPU with 32 MB RAM
- CD ROM drive to install the product

Remote Annex Server Tools for Windows NT requires RAC Software Release 11.1 or a subsequent release. The CD-ROM includes the appropriate RAC software release.

## Security Authentication

The RAC software has third-party security authentication tools available from Security Dynamics (SecurID) and RADIUS. Refer to the following sections if you plan to use security authentication software on the server.

### SecurID

If SecurID authentication is being used, the **sdconf.rec** file must be copied to the Windows NT **%SystemRoot%\system32** directory on the server. This is done through the SD\_Admin function provided in the SecurID software. The SecurID administrator should copy this file over to the server before continuing with the installation. The system can authenticate users only if this file is copied to the server.

### RADIUS

If RADIUS authentication is being used, all the necessary files are copied to the server during installation.

## Log On Privileges

If you install Remote Annex Server Tools for Windows NT on a primary domain controller, all users must have the right to log on locally. The system cannot authenticate users who do not have this privilege.

To allow users to log onto the primary domain controller:

1. **Choose** User Manager > User Rights **to open the User Rights Window.**
2. **In the Right field, select** Log on locally.

The **Grant To** box displays the names of all groups currently allowed to log on locally.

**3. Edit the list using Add and Remove.**

To add groups or individual users, press **Add** and select individual or group names from the **Add Users and Groups** dialog box.

To delete users or groups, highlight a name and click on **Remove**.

## Requirements for NA and Quick2Config Annex

The NA utility and the Quick2Config Annex application can be installed on client platforms as well as on the server. [Table 1-2](#) lists the minimum hardware and software requirements for installing and running this software on a workstation.

Table 1-2. Workstation Hardware and Software Requirements

Workstation Hardware/ Software	Requirements
Computer	100% IBM compatible; 80386 or higher; 33 MHz or higher DEC Alpha (with Windows NT 4.0 only)
Monitor	Windows compatible VGA or Super VGA adapter and display (640 by 480 or higher)
RAM	8 MB (minimum)
Hard disk	Approximately 6 MB of free space for Quick2Config Annex Approximately 1 MB of free space for NA
Mouse	Microsoft compatible mouse
Operating systems	Windows NT Server 3.51 or 4.0 Windows NT Workstation 3.51 or 4.0 Windows 95
CD-ROM drive	Quick2Config Annex and NA software are supplied on CD-ROM

## RACs

Quick2Config Annex supports:

- Remote Access Concentrator models running Release 14.1 or later
- Remote Annex models 2000, 4000, 5390, 5391 and 6100 running Release 11.2 or later
- Annex 3 and Micro Annex XL Communications Servers running Release 10.0 or later

## Using the RAC Software Online Help System

Both the Quick2Config Annex installation and the application itself include online help. Use the help system to view help topics that describe windows, displays, menu items, toolbar buttons, fields and procedures. In addition, you can find technical support and online services information in your help system.

### Starting Online Help

How you start online help depends on whether or not you are in installation help or application help.

### Installation Help

Press F1 while in a dialog box to get help information about installing Quick2Config Annex.

## Application Help

To start the Quick2Config Annex application help system:

- Choose Help > Contents.  
Displays the Quick2Config Annex help contents window, which lists the main help topics.
- Press the F1 key after selecting a tab or click on the Help button on each tab.  
Displays information about the contents of the tab. Click on the underlined text to get additional information about a specific field on the tab.
- Click on the arrow/question mark button, drag it to a menu and click on a command.  
Displays help information for the selected command.

## Moving Around Online Help

To move around the help system, use the toolbar at the top of the help window. From the toolbar you can jump to the Contents page, search for a help topic, go back to the previous help topic, view a history of the help topics selected, or browse backward and forward.

## Exiting Online Help

To exit the Quick2Config Annex application help system:

- Choose Exit from the Help File menu or toolbar.
- Click on the window menu icon in the upper left-hand corner of the help window and choose Close, or press Alt-F4.
- Double-click on the window menu icon.



# Chapter 2

## Installing Remote Access Concentrator Software

This chapter describes use of the Setup program to install Remote Access Concentrator Software for Windows. The installation example in this chapter loads NA, Server Tools and Quick2Config Annex on a host running either Windows NT Server 3.51 or Windows NT Server 4.0. The chapter also covers installing NA and Quick2Config Annex on Windows NT Workstations and Windows 95 systems.



If you are installing RAC Software for Windows from a Remote Annex Software for UNIX CD-ROM, the CD-ROM does not include the Server Tools.

Before installing the RAC software, make sure the hardware and software meet or exceed the minimum requirements described in [Chapter 1](#).

### Installing the Setup Program

The Remote Access Concentrator Software for Windows is provided on a CD-ROM along with an integrated setup program.



Before you install the Remote Access Concentrator Software, you should close all other Windows programs.

Remote Annex Server Tools for Windows requires Remote Access Concentrator Software Release 14.1 or a subsequent release. The CD ROM includes the appropriate RAC software release.

To install the RAC software:

- 1. Insert the CD in your CD-ROM drive.**
- 2. Use either Program Manager or File Manager to run:**

```
[CD-ROM Drive]:\Disk1\setup
```

Setup opens a Welcome dialog box ([Figure 2-1](#)).

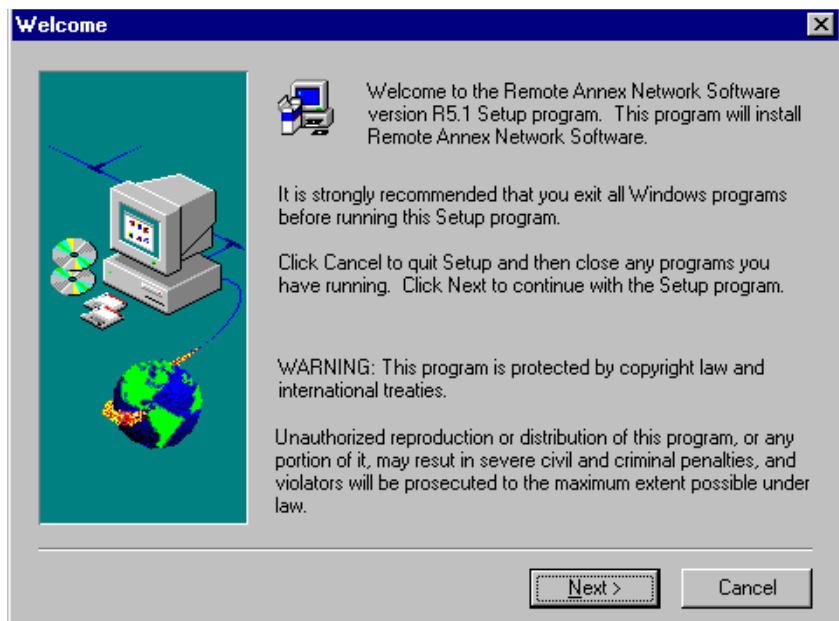


Figure 2-1. Welcome Dialog Box

3. **Read the instructions in this dialog box before continuing.**
4. **Click on Cancel if you need to close any Windows programs or Next to continue the installation.**

If you continue, Setup opens a window for choosing either software installation or making diskette copies of the Setup program ([Figure 2-2](#)).

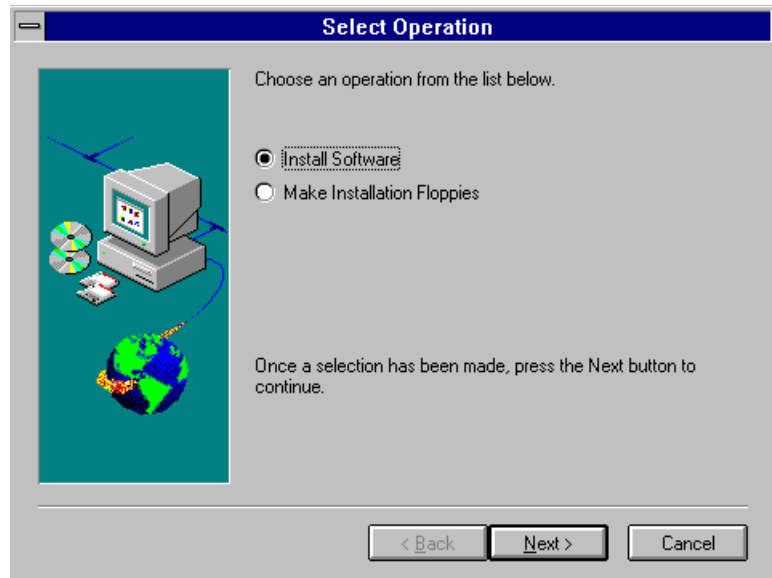


Figure 2-2. Select Operation Dialog Box

## Making Installation Diskettes

The Setup program allows you to make diskette copies of NA and Quick2Config Annex. This option enables you to install the software on client platforms that do not have CD-ROM drives.

To make diskette copies:

1. **Choose** Make Installation Floppies.
2. **Click on** Next.

Setup opens the Make Floppies dialog box ([Figure 2-3](#)).

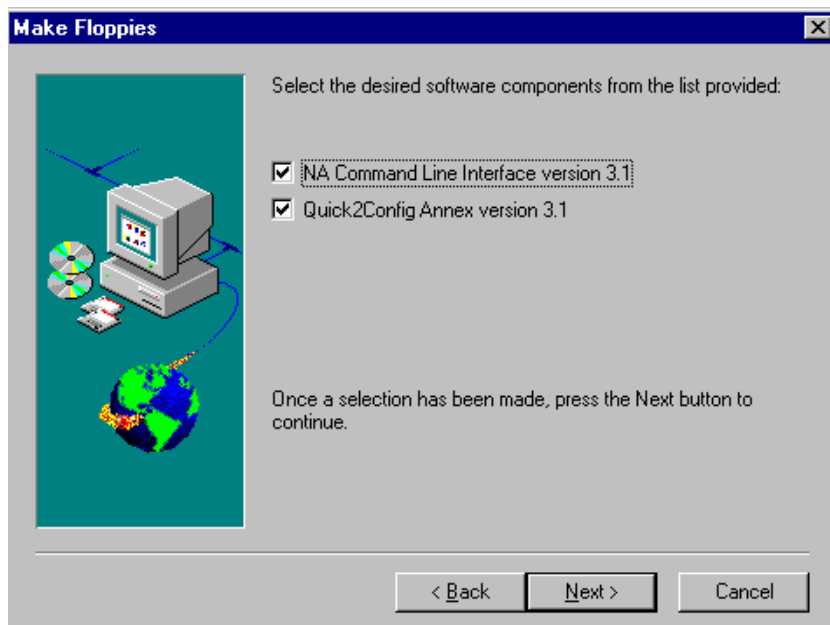


Figure 2-3. Make Floppies Dialog Box

The dialog box opens with NA and Quick2Config Annex selected.

1. **Click on the checkbox to the left of the selection to clear it if you do not want to copy one of the listed components.**
2. **Click on Next to continue.**

The Choose Location dialog box opens ([Figure 2-4](#)) with **A:** selected as the default path.

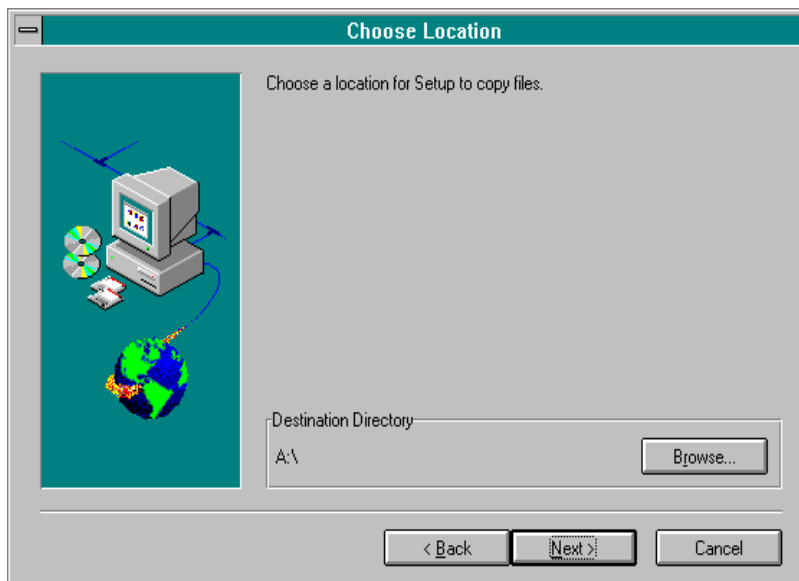


Figure 2-4. Choose Location Dialog Box

3. **Click on Next to accept the default destination drive.**
4. **If you want to change the path, click on Browse to select a new directory.**

Setup opens a standard Windows Choose Directory dialog box so you can select the new location ([Figure 2-5](#)).

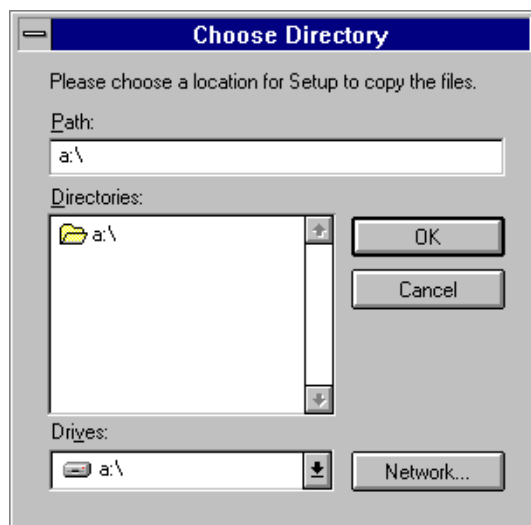


Figure 2-5. Choose Directory Dialog Box

5. **Use the dialog box to make your selection and click on OK.**  
Setup closes the dialog box and substitutes the new path name in the Choose Location dialog box.
6. **Click on Next to copy the Setup program to the selected location.**

## Starting the Setup Program

You start the software installation from the Select Operation dialog box ([Figure 2-2](#)).

To continue the installation:

1. **Choose Next.**  
Setup opens the Install Software dialog box which lists the three software modules that can be installed on the Windows NT Server platform ([Figure 2-6](#)).

Setup displays the dialog box with each of the components selected.

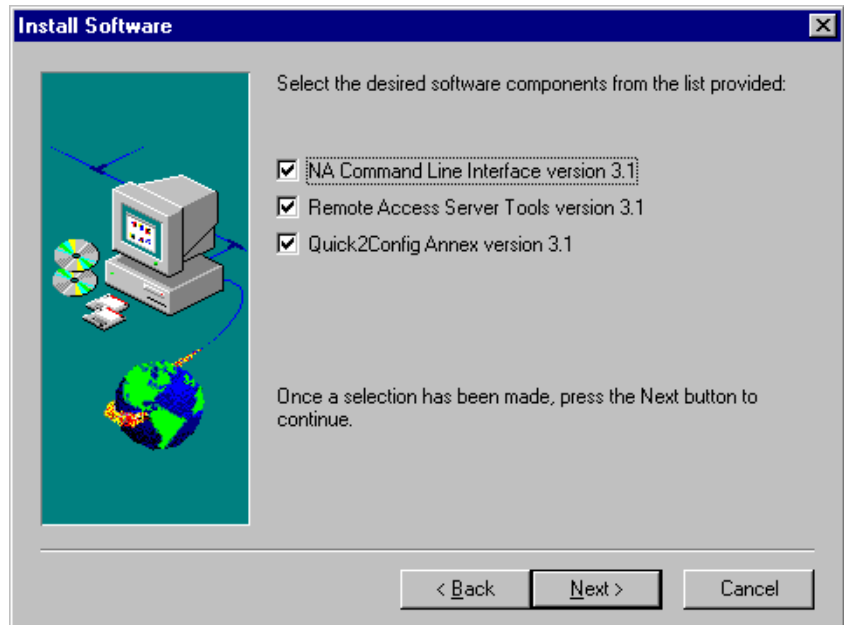


Figure 2-6. Install Software Dialog Box

2. **Click on any item to deselect installation of the module.**
3. **Choose Next to continue the installation.**

If you are not installing NA, skip to [Installing Server Tools on page 2-12](#).

If you are installing only Quick2Config Annex, skip to [Installing Quick2Config Annex on page 2-21](#).

## Installing NA

Before installing each software component, Setup scans the Windows NT Server platform for previously installed versions.

### No Previous Version

If Setup does not find a previous version of NA, the program displays the Choose Destination Location dialog box (Figure 2-7).

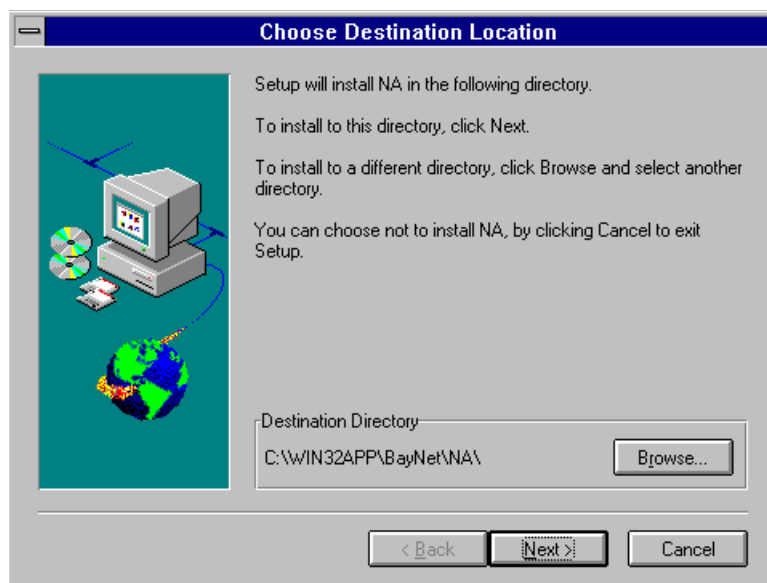


Figure 2-7. Choose Destination Location Dialog Box

The dialog box displays the default directory selection for the platform you are using:

Windows NT    **C:\WIN32APP\BayNet\NA**

Windows 95    **C:\Program Files\BayNet\NA**



- 1. To install in the default directory, click on Next.**

Setup begins copying the software to the selected directory. Skip to [Loading NA on page 2-11](#).

- 2. If you want to install in a different directory, click on Browse to select a new directory.**

Setup opens a standard Windows Choose Directory dialog box so you can select the new location ([Figure 2-8](#)).

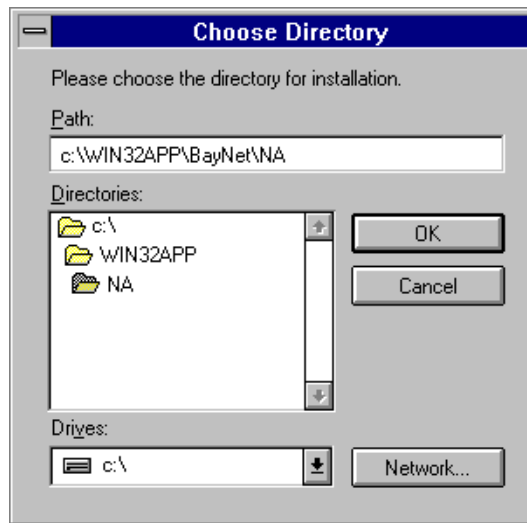


Figure 2-8. Choose Directory Dialog Box

- 3. Use the dialog box to make your selection and click on OK.**

Setup closes the dialog box and substitutes the new path name in the Choose Destination Location dialog box.

- 4. Click on Next to install in the new directory.**

Setup begins copying the software to the selected directory. Skip to [Loading NA on page 2-11](#).

## Previous Version Found

If the program discovers a previous version of NA, it opens a dialog box to give you a choice between overwriting the existing version or installing the software in a separate directory ([Figure 2-9](#)).

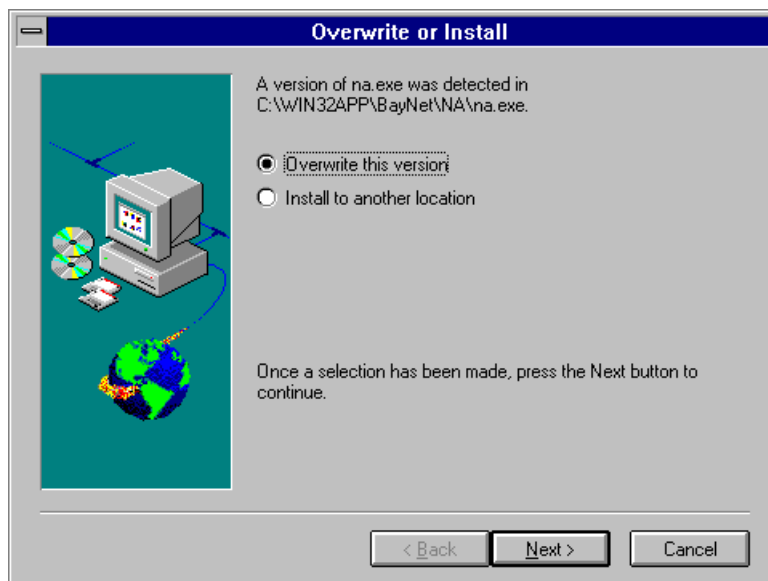


Figure 2-9. Overwrite or Install Dialog Box

To replace the current version:

1. **Choose** Overwrite this version **and click on** Next.

Setup installs the software in the same directory as the previous version. Skip to [Loading NA on page 2-11](#).

To install the software to another directory:

1. **Select** Install to another location **and click on** Next.

Setup displays the Choose Destination Location dialog box ([Figure 2-7](#)).

**2. Use the dialog box to make your selection and click on OK.**

Setup closes the dialog box and substitutes the new path name in the Choose Destination Location dialog box.

**3. Click on Next to install in the new directory.**

## Loading NA

As Setup loads the software, it displays gauge icons and a dialog box to mark the progress of the installation (Figure 2-10).

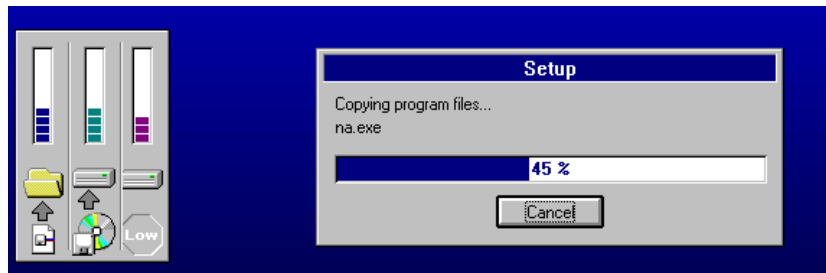


Figure 2-10. Setup Progress Icons

After copying the appropriate files and modifying program groups, Setup displays the release notes dialog box shown in Figure 2-11.

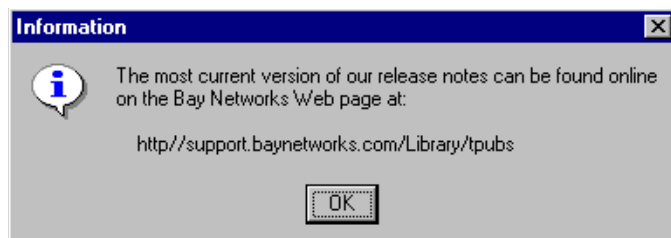


Figure 2-11. Release Notes Dialog Box

**4. Click OK to continue.**

Setup begins installation of the next selected module. If you are not installing Server Tools, skip to [Installing Quick2Config Annex on page 2-21](#).

## Installing Server Tools

If you opted to install Server Tools, the Setup program scans the Windows NT Server for previous versions of the software.

### No Previous Version

If Setup did not find a previous version of the Server Tools, the program displays the Choose Destination Location dialog box ([Figure 2-12](#)).

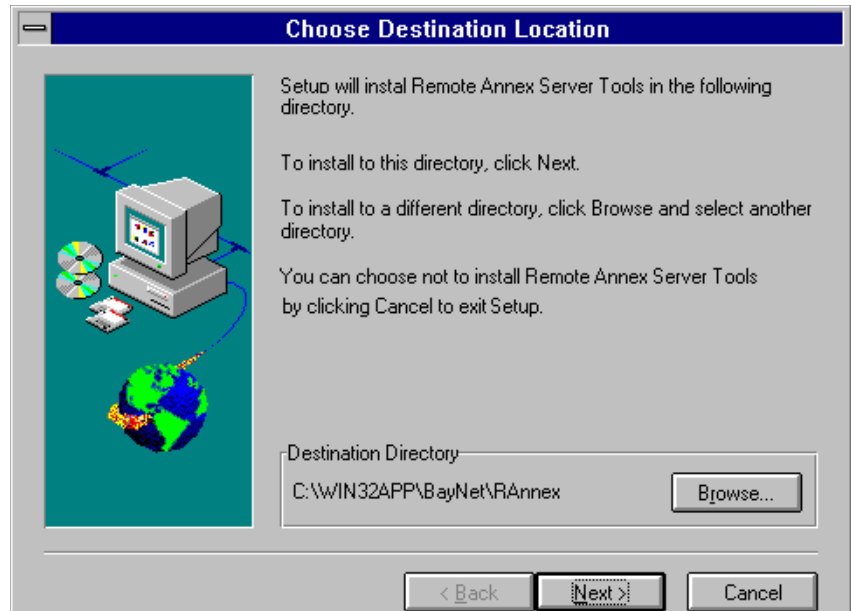


Figure 2-12. Server Tools Choose Destination Location Dialog Box

The dialog box displays a default directory selection for the software component:

**C:\WIN32APP\BayNet\RAAnnex**

1. **To install the Server Tools in the default directory, click on Next.**  
Setup begins installation of the Server Tools. Skip to [Choosing Remote Access Concentrators on page 2-17](#).
2. **If you want to install in a different directory, click on Browse.**  
Setup opens a standard Windows Choose Directory dialog box so you can select the new location ([Figure 2-13](#)).

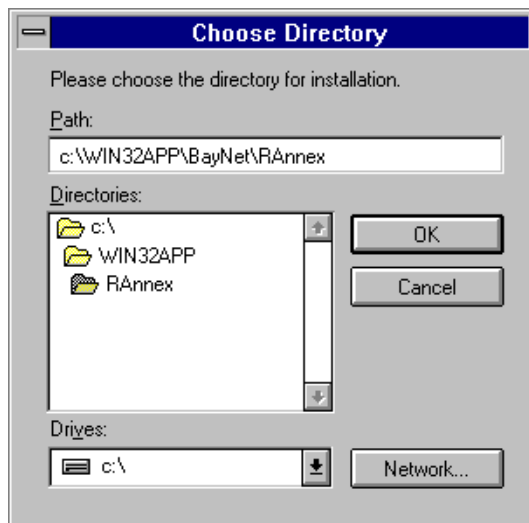


Figure 2-13. Choose Directory Dialog Box

3. **Use the dialog box to make your selection and click on OK.**  
Setup closes the dialog box and substitutes the new path name.
4. **Click on Next to accept the directory shown in the Choose Destination Location dialog box.**  
Setup begins installation of the Server Tools. Skip to [Choosing Remote Access Concentrators on page 2-17](#).

## Previous Version Found

If a previous version of the Server Tools is found, Setup provides three choices:

- **Overwrite the existing version** with the new software. This action replaces the options set in the previous version of the Server Tools with defaults settings in the new software.
- **Install the new software in a different directory.** This action gives you two versions of the Server Tools.



You may want to maintain prior versions of the Server Tools and the RAC images for certain applications. Refer to the Release Notes that accompanied the software to identify potential effects of the current version on your applications.

- **Upgrade the previous version** with the new software. This choice updates the software but preserves the settings configured with the previous Server Tools.

Setup opens a dialog box to choose between overwriting the software or upgrading it ([Figure 2-14](#)). Note that selecting the Overwrite option is the first step in installing the software in a different directory.

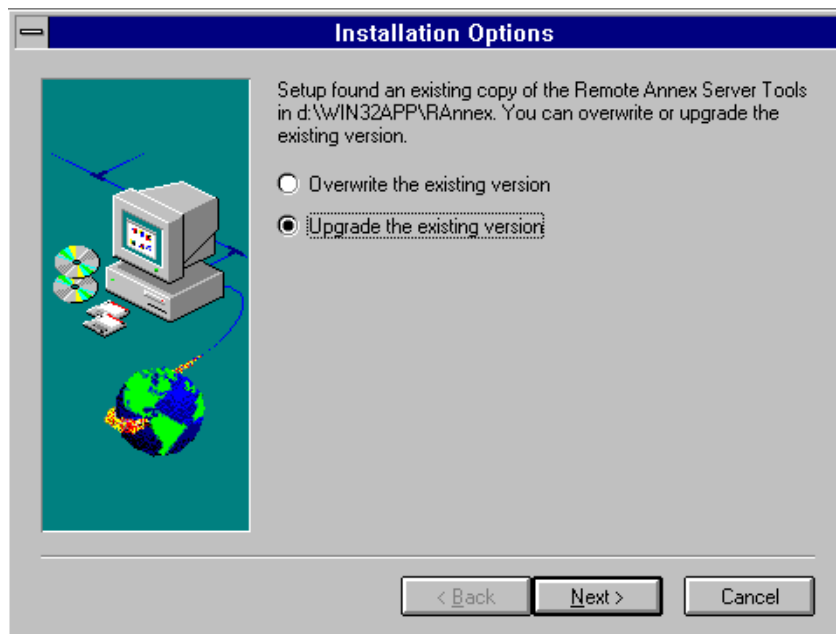


Figure 2-14. Server Tools Installation Options Dialog Box

To install the Server Tools in the same directory, but save the existing RAC settings:

1. **Select** Upgrade the existing version **and click on Next.**  
Setup begins installation of the Server Tools. Skip to [Choosing Remote Access Concentrators on page 2-17](#).

To install the Server Tools in the same directory with the default RAC settings:

1. **Select** Overwrite the existing version **and click on Next.**  
Setup opens the Choose Destination Location dialog box ([Figure 2-12](#)) so you can choose to install the software in the same directory as the previous version, or select a new directory.



**2. Click on Next.**

Setup begins installation of the Server Tools. Skip to [Choosing Remote Access Concentrators](#).

To install the Server Tools in a different directory:

**1. Choose** Overwrite the existing version **and click on Next.**

Setup opens the Choose Destination Location dialog box ([Figure 2-12](#)) so you can select a new directory.

**2. Click on Browse.**

Setup opens a standard Windows Choose Directory dialog box so you can select the new location ([Figure 2-13](#)).

**3. Use the dialog box to make your selection and click on OK.**

Setup closes the dialog box and substitutes the new path name in the Choose Destination Location dialog box.

**4. Click on Next to install in the new directory.**

Setup begins installing the software to the selected directory.

## Choosing Remote Access Concentrators

When Setup installs the Annex Server Tools, it opens the Select Remote Annex Product to Install window ([Figure 2-15](#)).

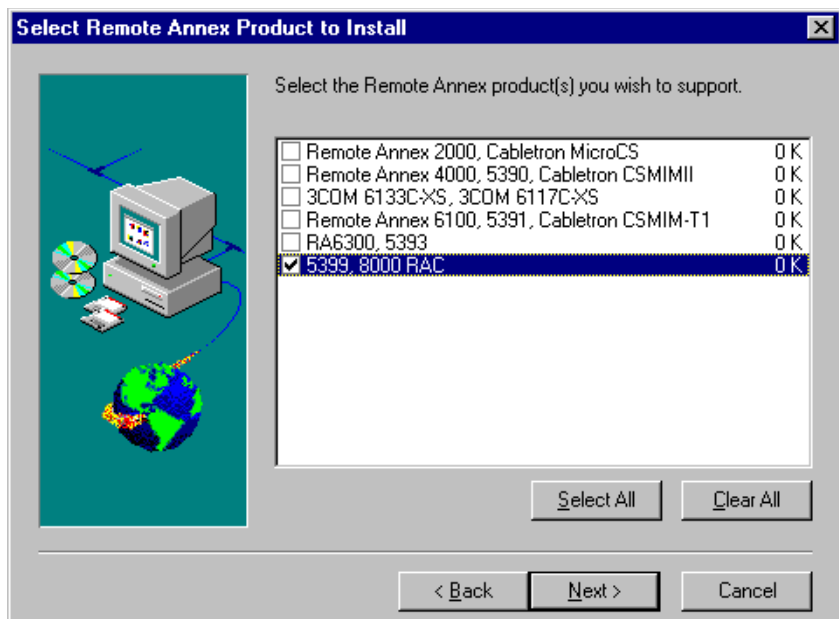


Figure 2-15. Select Remote Annex Image Dialog Box

1. Use Select All or Clear All to select or deselect the entire list.
2. Double-click on an item to toggle its selection ON or OFF.
3. Click on Next when you have made your selections.
4. Select the geographic location(s) that applies to your site (Figure 2-16).

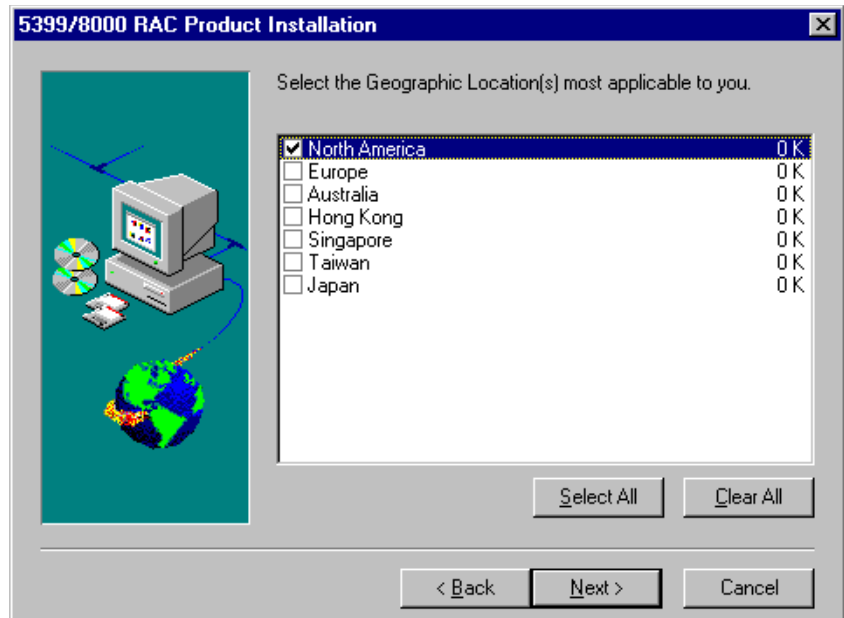


Figure 2-16. Geographic Locations

Setup will install the appropriate images for the product(s) and geographic location(s) checked in the dialog boxes. After installing the image files, Setup opens the Server Tools Options dialog box ([Figure 2-17](#)).

For detailed instructions on using the Server Tools Options windows, refer to the *Remote Annex Server Tools for Windows NT User Guide*.

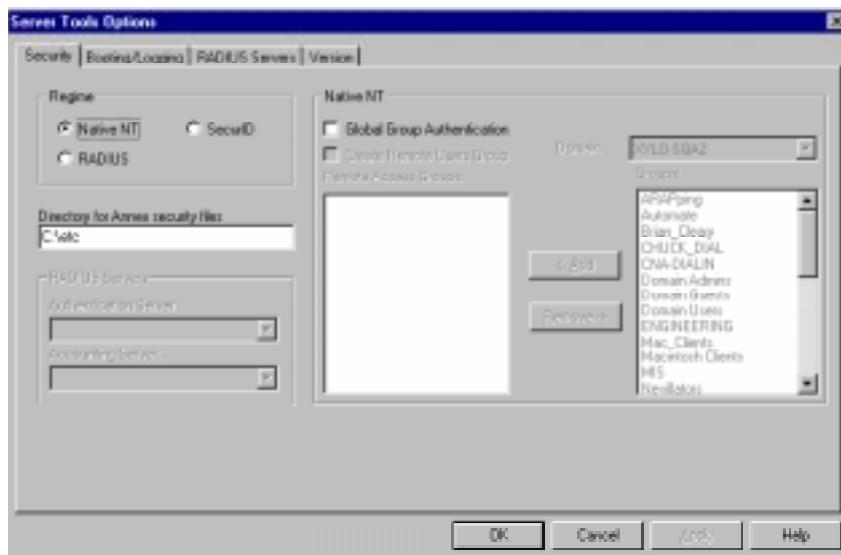


Figure 2-17. Server Tools Options Dialog Box

**5. After setting the options, choose OK.**

The program displays the release notes dialog box shown in [Figure 2-18](#).

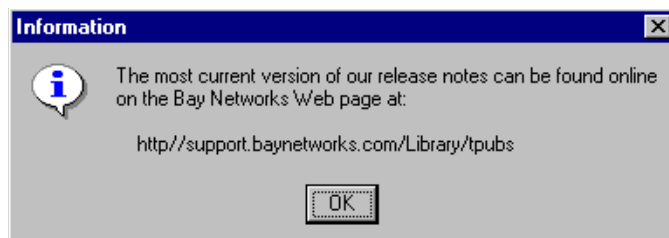


Figure 2-18. Release Notes Dialog Box

**6. Click on OK.**

Setup displays an information dialog box informing you that *all services have started*.

## Installing Quick2Config Annex

If you select Quick2Config Annex installation, the Setup program scans the Windows NT Server for previous versions of the software.

### No Previous Version

If the program does not find a previous version, Setup displays the Choose Destination Location dialog box (Figure 2-19).

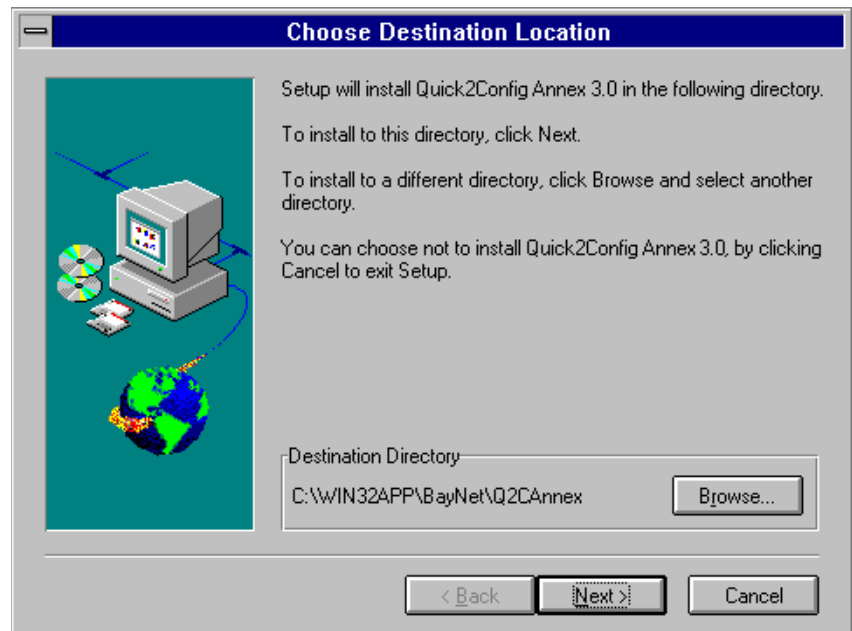


Figure 2-19. Choose Destination Location Dialog Box

The dialog box displays the default directory selection for the platform you are using:

Windows NT **C:\WIN32APP\BayNet\Q2CAnnex**

Windows 95 **C:\Program Files\BayNet\Q2CAnnex**

**1. To install in the default directory, click on Next.**

Setup begins copying the software to the selected directory. Skip to [Loading the Programs on page 2-24](#).

**2. If you want to install in a different directory, click on Browse to select a new directory.**

Setup opens a standard Windows Choose Directory dialog box so you can select the new location ([Figure 2-20](#)).

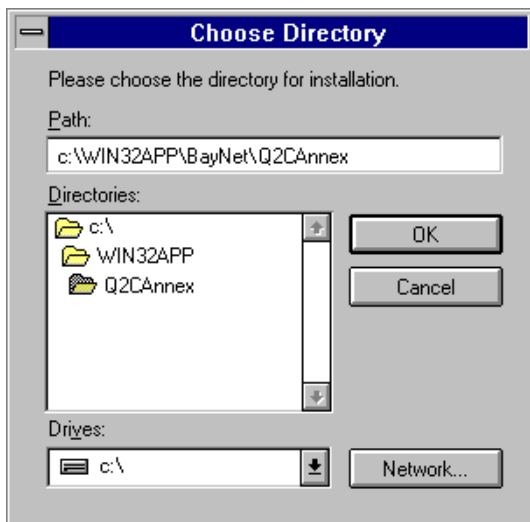


Figure 2-20. Choose Directory Dialog Box

**3. Use the dialog box to make your selection and click on OK.**

Setup closes the dialog box and substitutes the new path name in the Choose Destination Location dialog box.

**4. Click on Next to install in the new directory.**

Setup begins copying the software to the selected directory. Skip to [Loading the Programs on page 2-24](#).

## Previous Version Found

If Setup discovers a previous version of Quick2Config Annex, the program opens a dialog box to give you a choice between overwriting the existing version or installing the software in a separate directory ([Figure 2-21](#)).

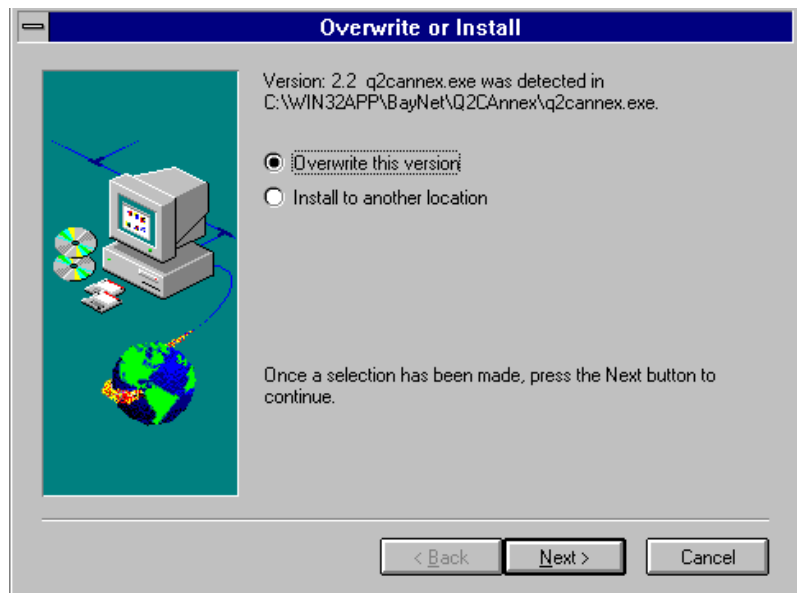


Figure 2-21. Overwrite or Install Dialog Box

To replace the current version:

**1. Choose Overwrite this version and click on Next.**

Setup installs the software in the same directory as the previous version. Skip to [Loading the Programs on page 2-24](#).

To install Quick2Config Annex in different directory:

1. **Choose** Install to another location **and click on** Next.  
Setup displays the Choose Directory dialog box ([Figure 2-20](#)).
2. **Use the dialog box to make your selection and click on** OK.  
Setup closes the dialog box and substitutes the new path name in the Choose Directory dialog box.
3. **Click on** Next **to install in the new directory**.

## Loading the Programs

As Setup loads the software, it displays gauge icons to mark the progress of the installation ([Figure 2-22](#)).

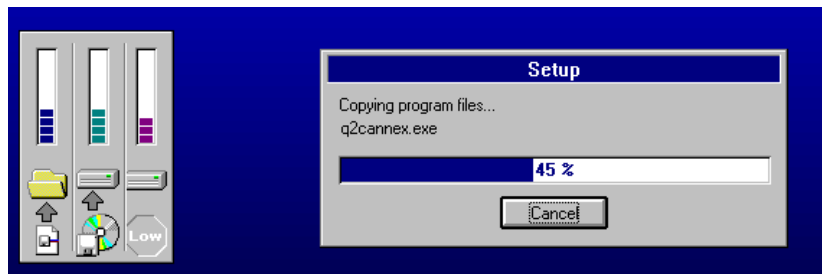


Figure 2-22. Setup Progress Icons

Setup copies the appropriate files and modifies program groups.



When you install Quick2Config Annex, Setup adds an application-related section to your *win.ini* file with path information.

When the process is complete, the program displays the release notes dialog box shown in [Figure 2-23](#).



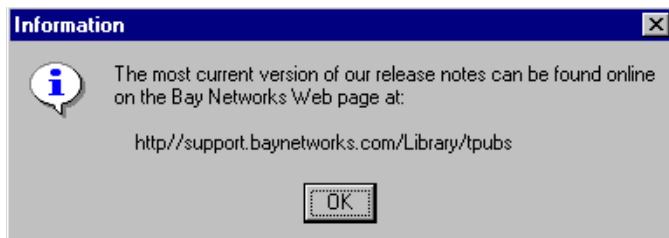


Figure 2-23. Release Notes Dialog Box

**1. Click OK to continue.**

Setup displays the Setup Complete message box (Figure 2-24).

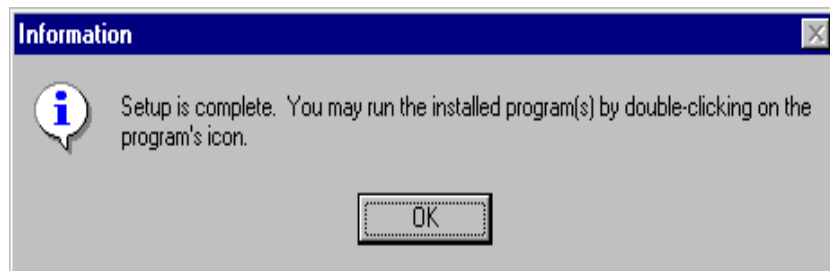


Figure 2-24. Setup Complete Message Box

**2. Click on OK to exit the Setup program.**

## Getting Started with RAC Software

To start any of the software modules, click on the appropriate icon in the Bay Networks program group.

For information on how to select an authentication tool and for detailed instructions on using the Server Tools Options windows, refer to *Using Remote Access Concentrator Server Tools for Windows NT*<sup>®</sup>.

For information on using the NA utility, refer to *Managing Remote Access Concentrators Using Command Line Interfaces*.

Click on the Q2C Annex icon in the Bay Networks program group to start Quick2Config Annex. Refer to the online help system included with the Quick2Config Annex application for instructions on using Quick2Config Annex. In addition, refer to online help system for basic configuration examples.

If you need technical assistance, refer to the information about Bay Networks Technical Response Centers in the help system.