

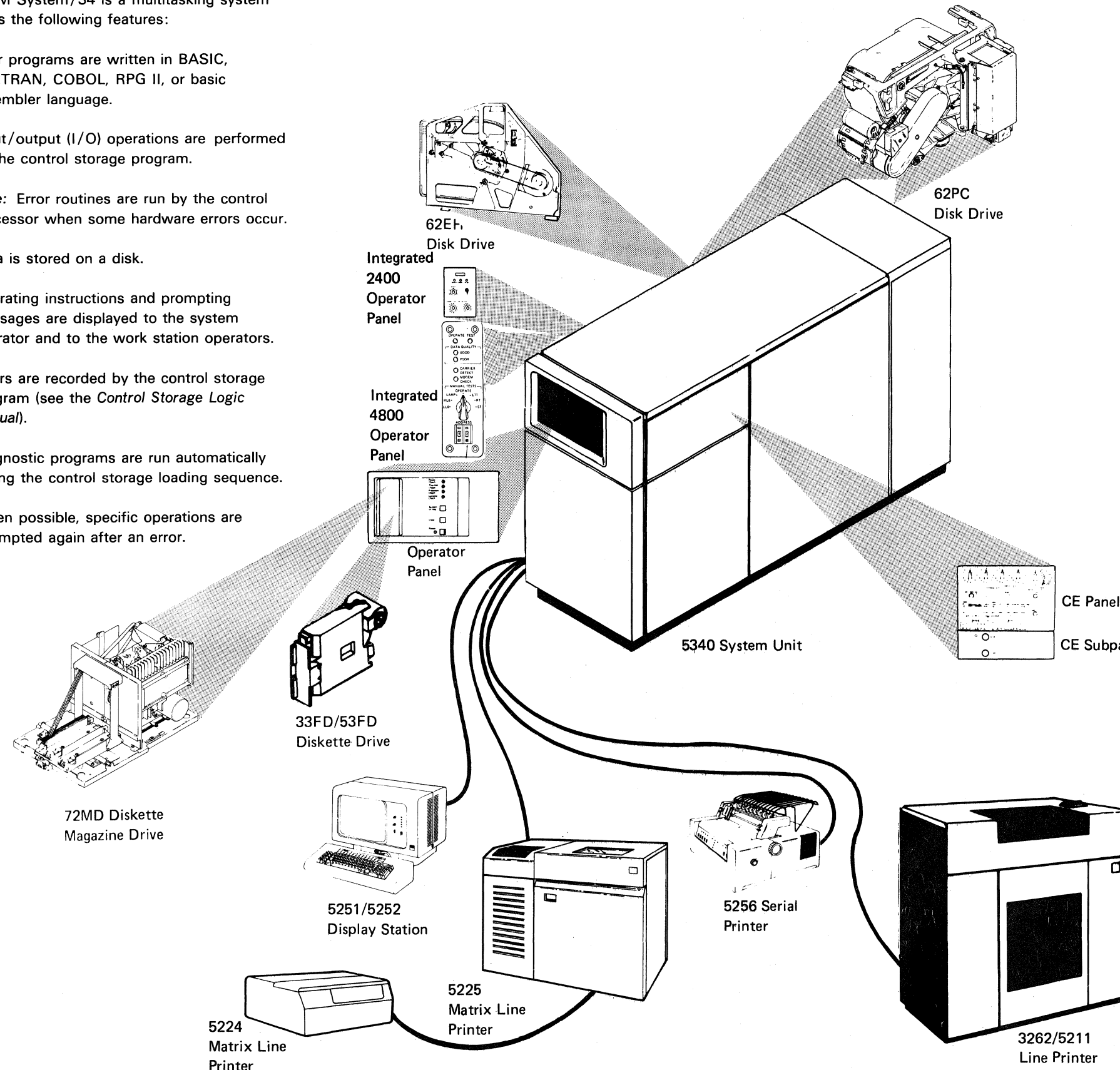
Introduction to IBM System/34

The IBM System/34 is a multitasking system and has the following features:

- User programs are written in BASIC, FORTRAN, COBOL, RPG II, or basic assembler language.
 - Input/output (I/O) operations are performed by the control storage program.
- Note: Error routines are run by the control processor when some hardware errors occur.
- Data is stored on a disk.
 - Operating instructions and prompting messages are displayed to the system operator and to the work station operators.
 - Errors are recorded by the control storage program (see the *Control Storage Logic Manual*).
 - Diagnostic programs are run automatically during the control storage loading sequence.
 - When possible, specific operations are attempted again after an error.

System/34 is made up of the following devices:

- 5340 System Unit—The processing unit executes main storage instructions and control storage instructions under control of the main storage processor (MSP) and the control processor (CP).
- Operator Panel—The operator panel has the switches to turn power on and off, and to start the initial program load (IPL) sequence. The operator panel also contains the System In Use, Console Check, Processor Check, Thermal Check, and Power Check lights.
- CE Panel and CE Subpanel—The panels contain lights and switches that the customer engineer uses during maintenance.
- 62EH/62PC Disk Drive(s)—The 62EH disk drive(s) have a storage area of 8.6 megabytes, 13.2 megabytes, or 27.1 megabytes. The 62PC disk drive(s) have a storage area of 63.9 megabytes, 128.4 megabytes, or 257.4 megabytes. The disk stores user programs, large data files, and the System Support Program Product (SSP).
- 33FD/53FD/72MD Diskette Drive—The diskettes on the diskette drive supply input and output data. The diskettes store user programs, data files, and some diagnostic programs.
- 5251/5252 Display Station(s)—Each display station is a separately attached device that includes a keyboard and a display screen. The operator uses the keyboard to enter data, to control various system functions, and to control work station operations. The display screen shows data as it is entered, program-generated messages to the operator, and other information needed by the operator.
- 3262/5211 Line Printer—The line printer is a separately attached device that prints information from the system. The 3262 Line Printer can print 132 print positions per line at a rate of 650 lines per minute. The 5211 Line Printer can print 132 print positions per line and either 160 (Model 1) or 300 (Model 2) lines per minute.
- 5224 Matrix Line Printer—The matrix line printer is a separately attached device that prints information from the system. The 5224 Matrix Line Printer can print at either 140 (Model 1) or 240 (Model 2) lines per minute at 10 characters per inch. The print speed is either 95 (Model 1) or 175 (Model 2) lines per minute at 15 characters per inch.
- 5225 Matrix Line Printer—The matrix line printer is a separately attached device that prints information from the system. The 5225 Matrix Line Printer can print up to 198 print positions per line at 15 characters per inch or 132 print positions per line at 10 characters per inch. The print speed is between 90 and 560 lines per minute.
- 5256 Serial Printer—The serial printer is a separately attached device that prints information from the system. The serial printer can print 132 print positions per line at a speed of 40, 80, or 120 characters per second.
- Data Communications Adapters—MLCA and/or the first and second communications adapters are features that permit communication with a remote location. Data communications also supports binary synchronous communications (BSC) or synchronous data link control (SDLC).

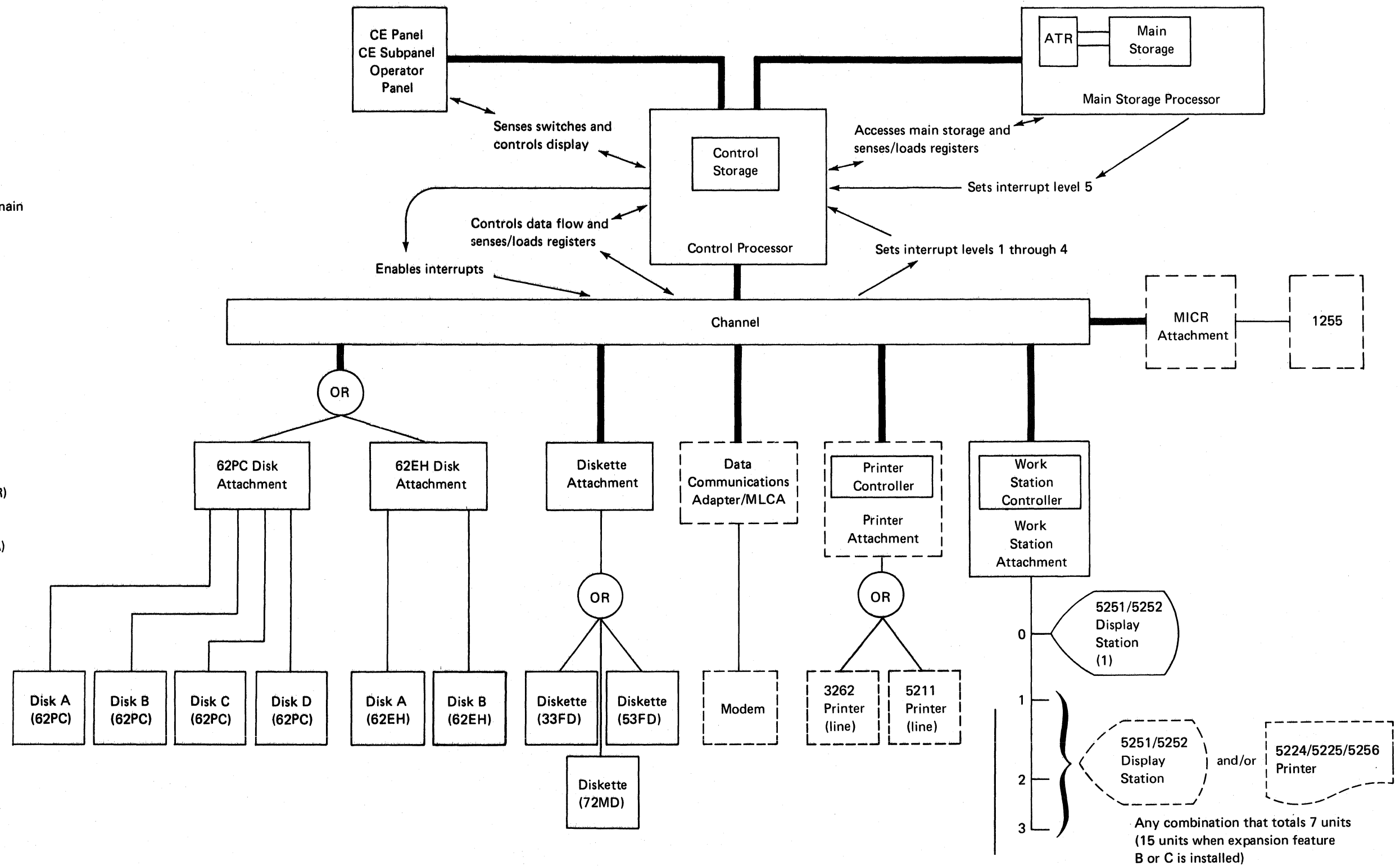


The processing unit (5340 System Unit) contains the following:

- CE panel and subpanel
- Channel/port
- Control processor and associated control storage
- Disk drive and attachment
- Diskette drive and attachment
- Main storage processor and associated main storage
- Operator panel
- Printer attachment
- Power supplies
- Work station attachment

The following features, if installed, are also contained in the processing unit.

- Data communications adapter
- Magnetic ink character recognition (MICR) attachment
- Multiline communications adapter (MLCA)



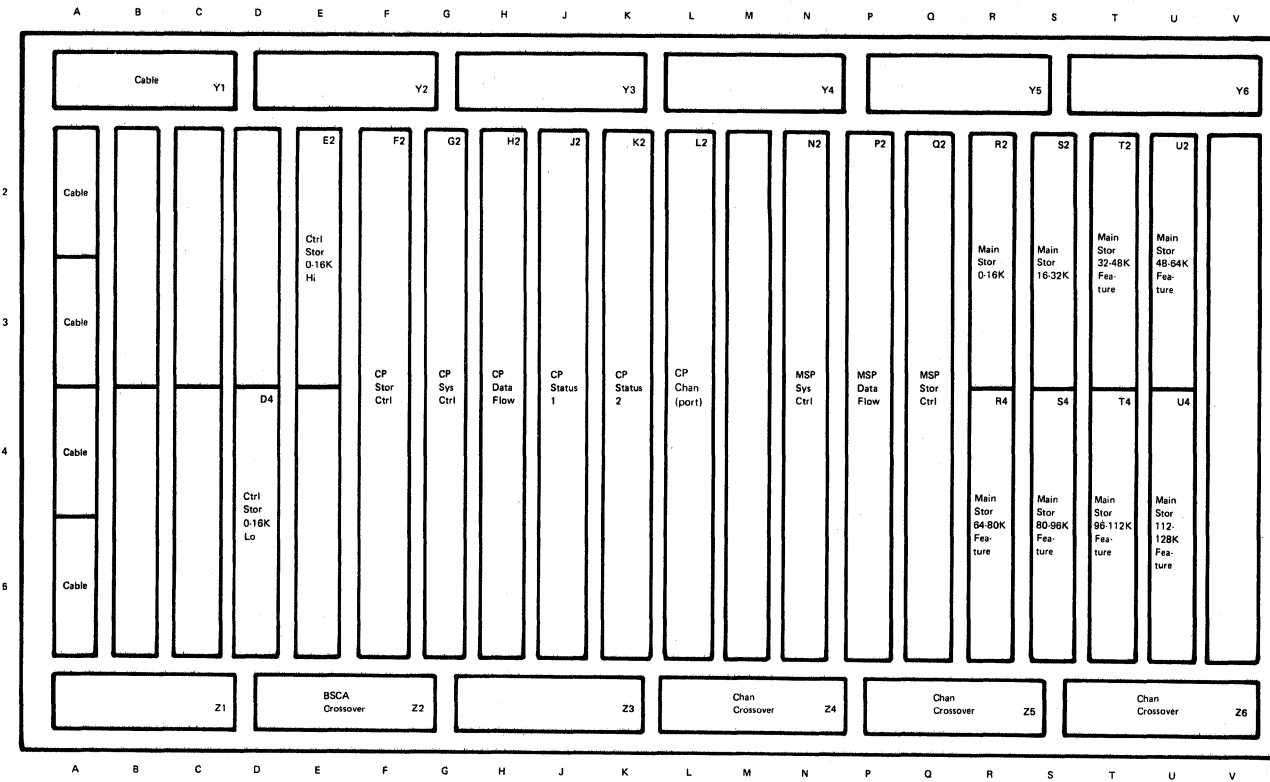
----- Indicates features.

Card Locations for the A-A1 Board

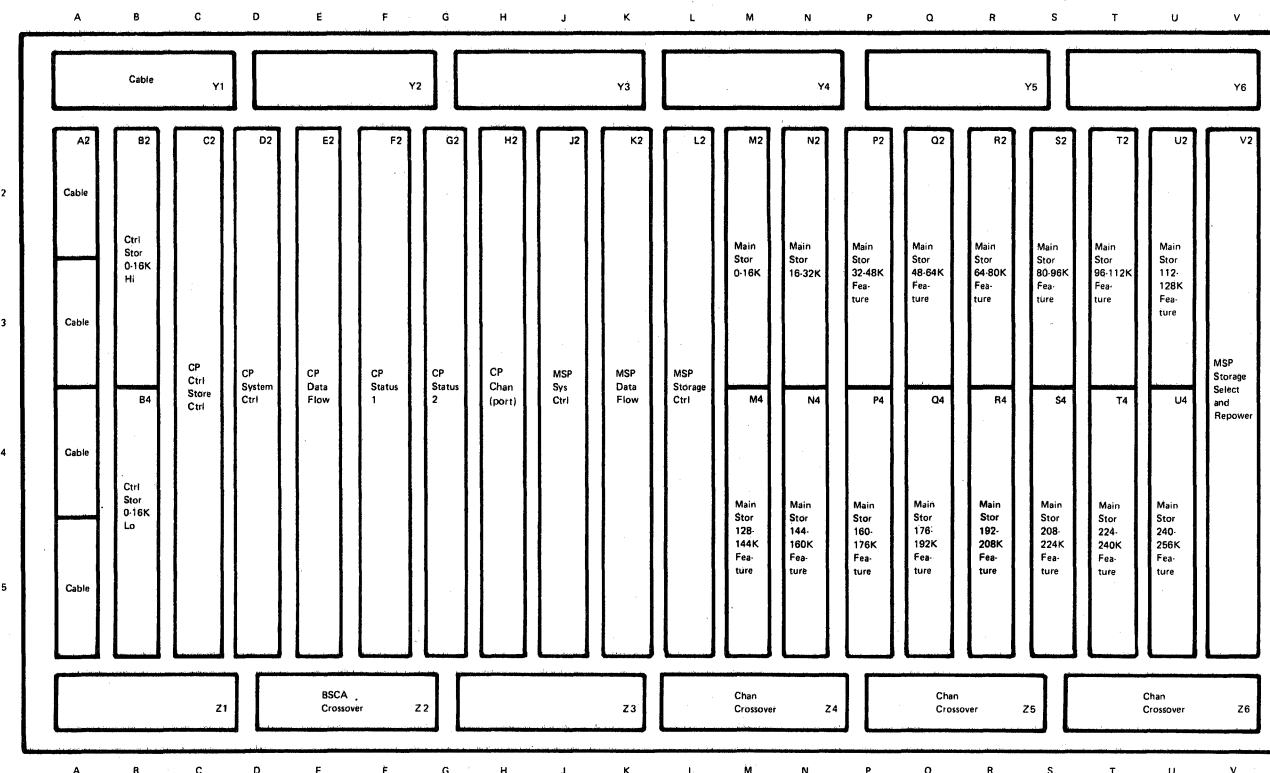
The A-A1 board has two levels of board and card arrangements. Either level board uses the control storage and main store memory cards and the six control processor cards. Since board socket positions differ, references for level 1 or level 2 board/card arrangements are shown. However, the main storage processor cards differ for each board level, and therefore, the cards cannot be swapped.

To determine if the A-A1 board/cards in the 5340 System unit are level 1 or level 2, check card location B2. If a card is in the B2 location, a level 2 board and cards are installed.

A-A1 Board Level 1



A-A1 Board Level 2



This page intentionally left blank.

