

8V

+ C9

+ C10

CR9

CR10

K1

CR1

K2

CR2

K3

CR3

J2

R8

R9

R10

R11

R12

C1

C2

R13

C3

C4

R14

R15

R16

R17

R18

R19

CR4

CR5

CR6

C5

C6

C7

C8

R20

R21

R22

R23

R24

5A

5B

CR7

R25

R26

R27

R28

R29

R30

R31

R32

R33

R34

J3

THE SPEAKEASY™  
from Thinker Toys™

Copyright 1977  
G. MORROW

+ GROUND

R38

R39

16V

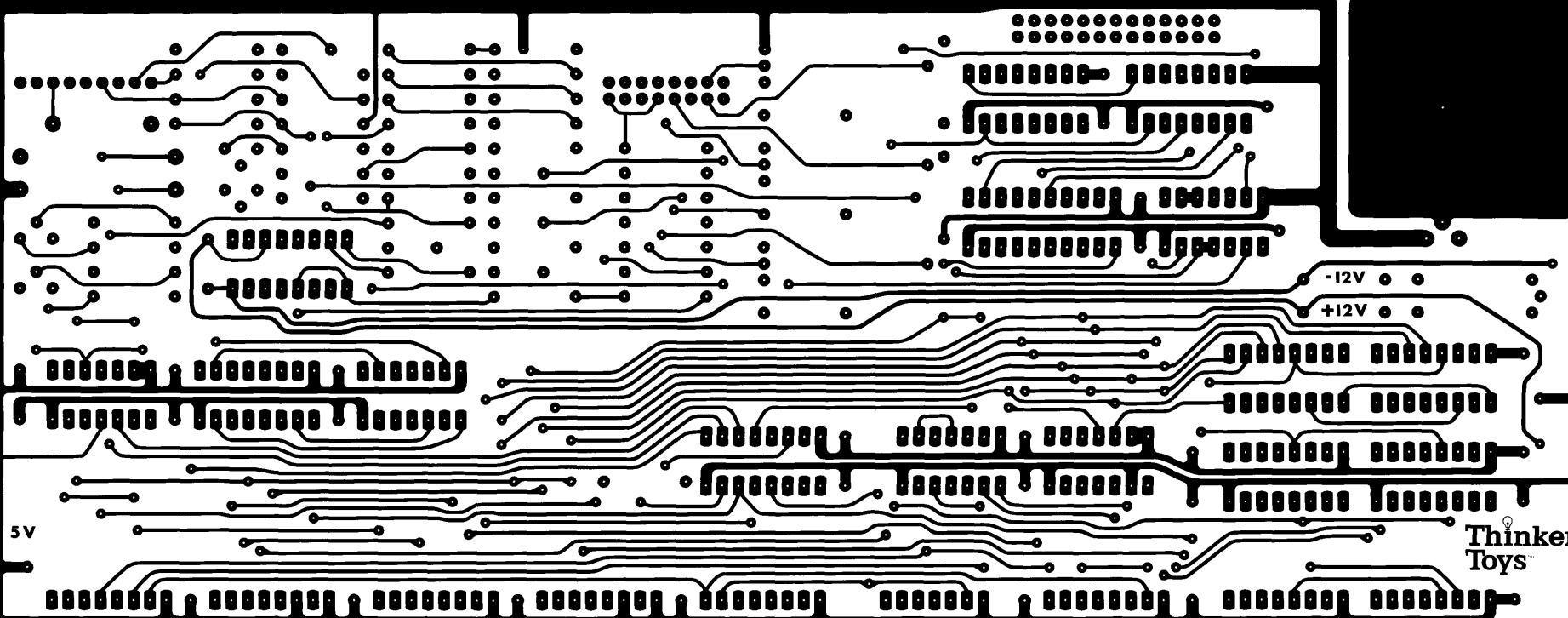
XRDY

PRDY

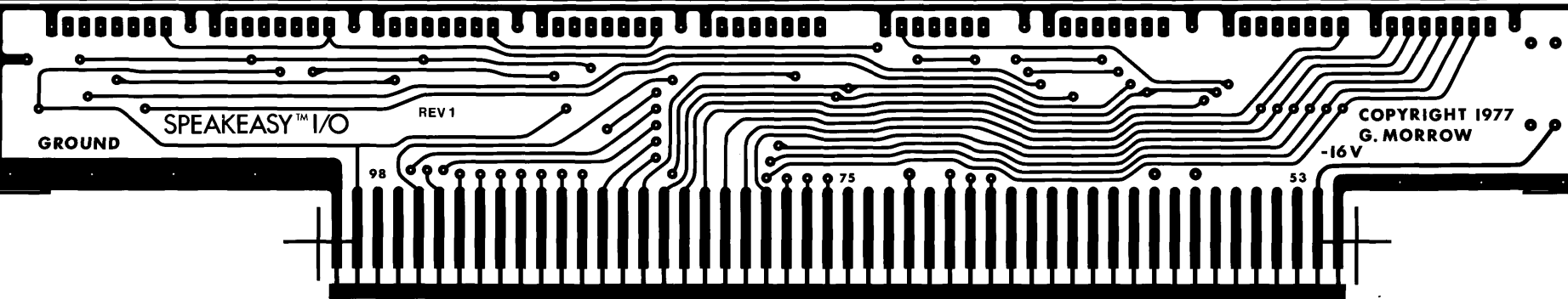
25

49

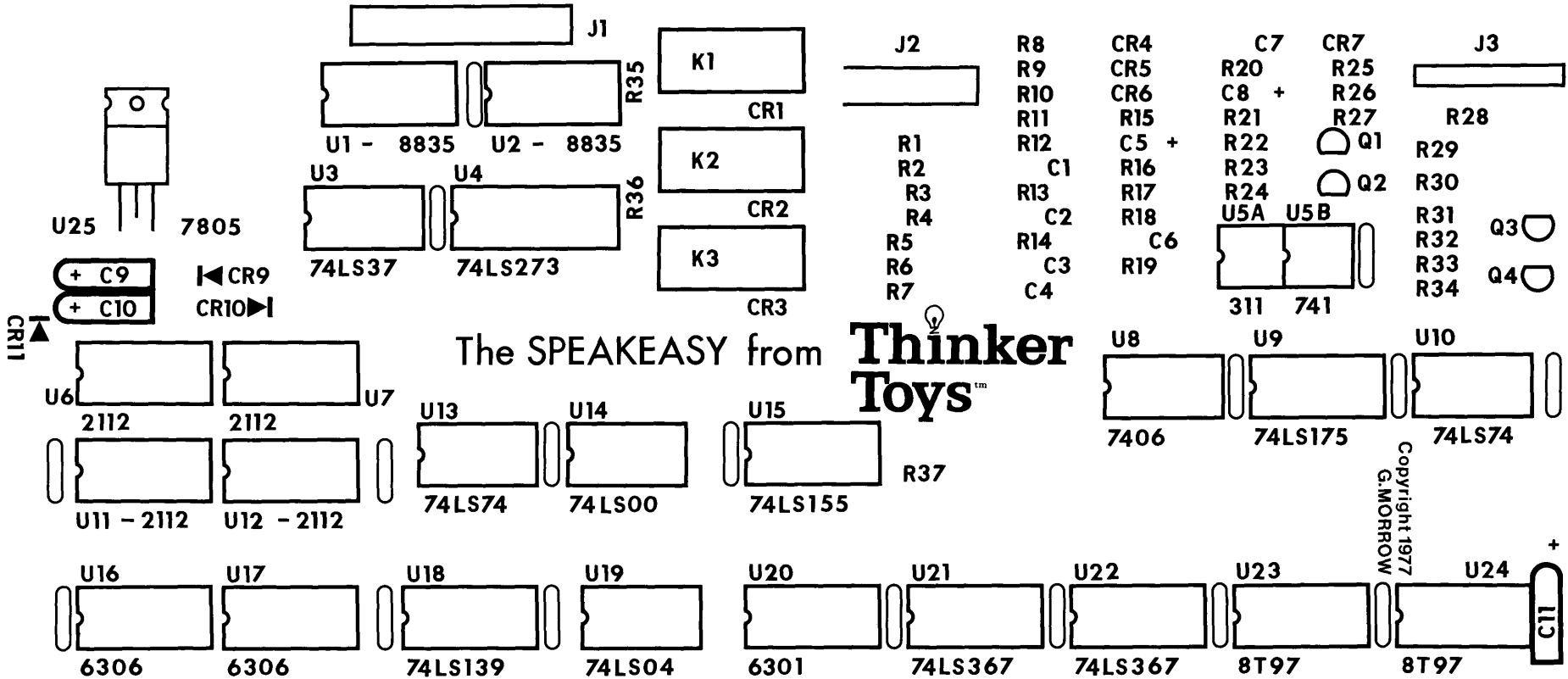




Thinker  
Toys



REDUCE TO 10.000" ± .005"



The SPEAKEASY from **Thinker Toys™**

Copyright 1977  
G.MORROW

○ = C12-C28, DISC BYPASS CAPS.



R39  
R38

REV I

COMPLEMENT SIDE

SPEAKEASY - 2X (RR) 3-18-78 BM

REV I - 5-25-78 BM a1-4 added