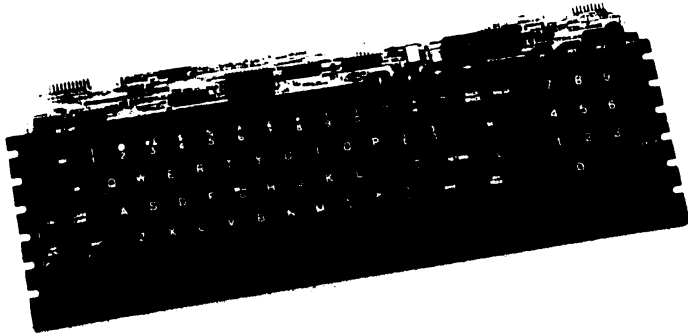


MODEL L2207	KEYBOARD
83 KEY VT100	



**STANDARD FEATURES**

- Low-Profile Solid-State Switches
- Durable 2-Shot Molded Keytops
- N-Key Rollover
- 5 VDC Operation
- Rigid Frame Mounting
- 5 Year Switch Warranty
- Sculptured Keytops
- Off-The-Shelf Availability
- TTL Level Serial Input/Output (300 Baud)

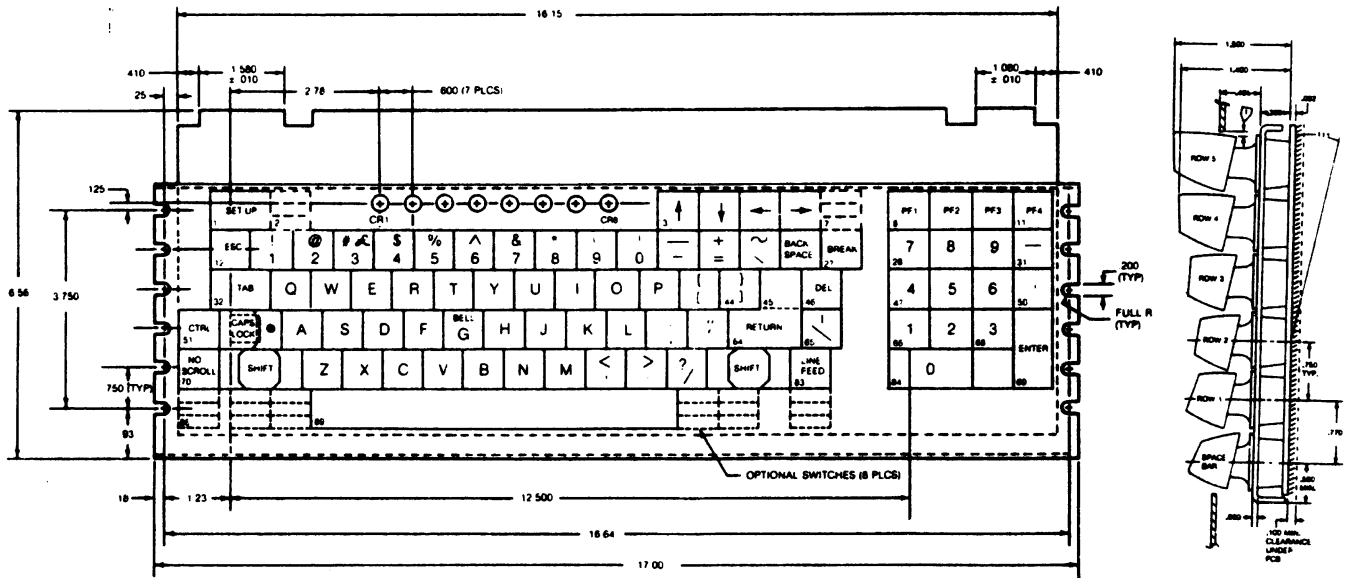
**OPTIONAL FEATURES**

- 9 Additional Keys
- Parallel Data Output
- Card-Edge or Header Connector
- Minimum Interface

**DESCRIPTION:**

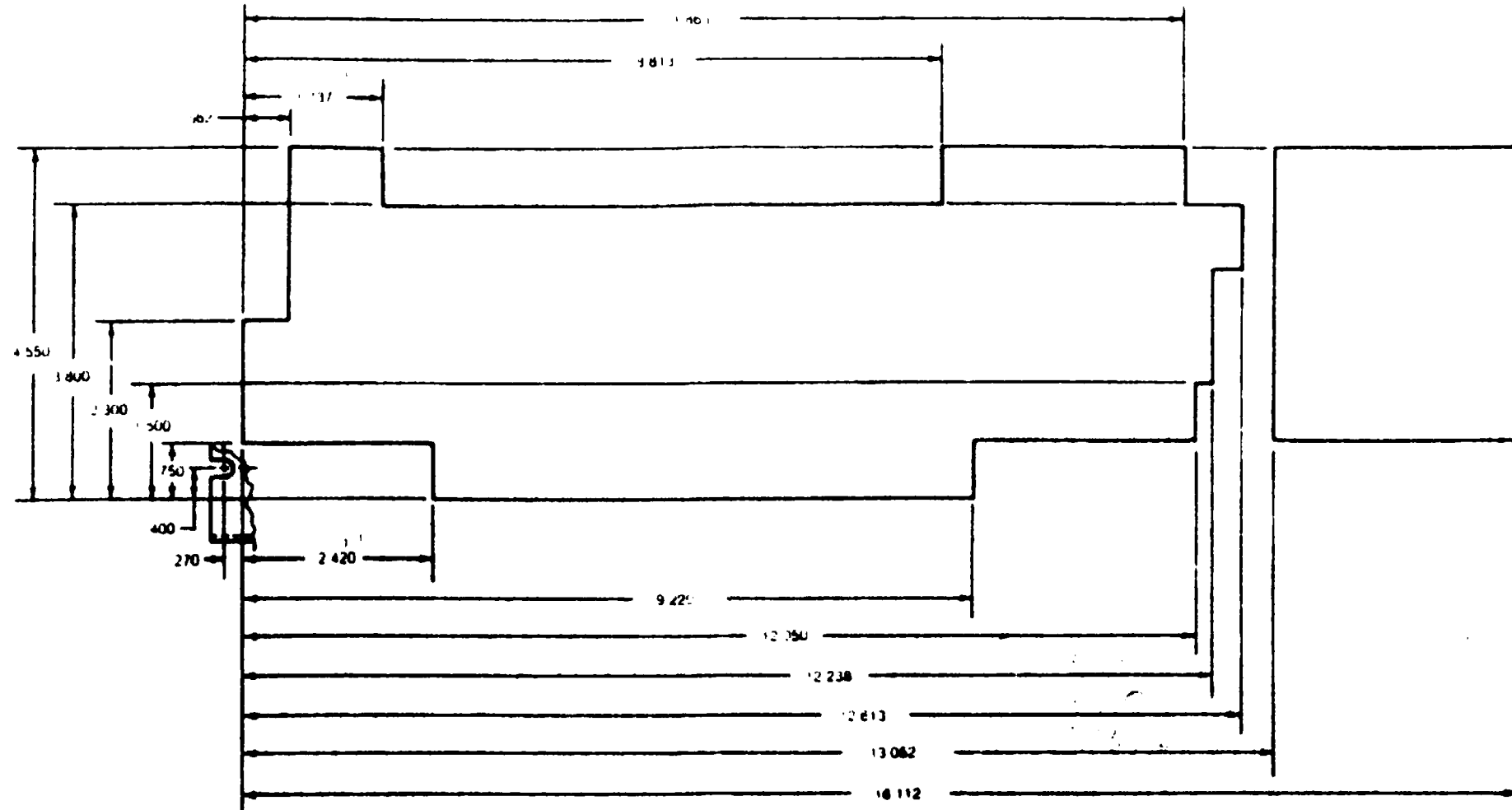
The Model L2207 offers the popular key layout for a detachable, serial interface terminal keyboard. An on-board microcomputer provides features not found on any other keyboard. The simple four-wire serial port provides four modes of key data and allows the terminal to actuate the LED indicators and an audible device which beeps or clicks as instructed.

Key Tronic sales representatives are located worldwide to assist you with your unique keyboard requirements. They have pricing, delivery, and part number information on all of our standard designs, and can also work with you to specify a low-cost custom keyboard if required.



83 KEY VT100

## ENCLOSURE CUTOUT



## ASCII CODE TABLE

Key	Unshift	Shift	Control	Control & Shift	Key	Unshift	Shift	Control	Control & Shift
1	/ FE	FE	FE	FE	47	D0	D0	D0	D0
2	F0	F0	F0	F0	48	D1	D1	D1	D1
3	F1	F1	F1	F1	49	D2	D2	D2	D2
4	F2	F2	F2	F2	50	D3	D3	D3	D3
5	F3	F3	F3	F3	51	CONTROL			
6	F4	F4	F4	F4	52	CAPS LOCK			
7	F5	F5	F5	F5	53	a	A	SOH	SOH
8	F6	F6	F6	F6	54	s	S	DC3	DC3
9	F7	F7	F7	F7	55	d	D	EOT	EOT
10	F8	F8	F8	F8	56	l	F	ACK	ACK
11	F9	F9	F9	F9	57	g	G	BEL	BEL
12	ESC	ESC	ESC	ESC	58	h	H	BS	BS
13	1	!	1	!	59	k	J	LF	LF
14	2	@	NUL	NUL	60	k	K	VT	VT
15	3	#	E5	E5	61	l	L	FF	FF
16	4	\$	4	\$	62	:	:	:	:
17	5	%	5	%	63	.	.	.	.
18	6	&	6	&	64	CR	CR	CR	CR
19	7	&	7	&	65			FS	FS
20	8	*	8	*	66	CO	CO	CO	CO
21	9	(	9	(	67	C1	C1	C1	C1
22	0	)	0	)	68	C2	C2	C2	C2
23	-	_	US	US	69	C3	C3	C3	C3
24	=	+	=	+	70	BO	BO	BO	BO
25	\	~	\	~	71	SHIFT			
26	BS	BS	BS	BS	72	z	Z	SUB	SUB
27	E0	E0	E0	E0	73	x	X	CAN	CAN
28	E1	E1	E1	E1	74	c	C	ETX	ETX
29	E2	E2	E2	E2	75	v	V	SYN	SYN
30	E3	E3	E3	E3	76	b	B	STX	STX
31	E4	E4	E4	E4	77	n	N	SO	SO
32	HT	HT	HT	HT	78	m	M	CR	CR
33	q	Q	DC1	DC1	79	.	<	.	<
34	w	W	ETB	ETB	80	.	>	.	>
35	e	E	ENQ	ENQ	81	/	?	/	?
36	r	R	DC2	DC2	82	SHIFT			
37	i	I	DC4	DC4	83	OA	OA	OA	OA
38	y	Y	EM	EM	84	B1	B1	B1	B1
39	u	U	NAK	NAK	85	B2	B2	B2	B2
40	i	I	HT	HT	86	A0	A0	A0	A0
41	o	O	SI	SI	87	A1	A1	A1	A1
42	p	P	DLE	DLE	88	A2	A2	A2	A2
43	{	{	ESC	ESC	89	SP	SP	SP	SP
44	}	}	GS	GS	90	A3	A3	A3	A3
45	D4	D6	D4	D6	91	A4	A4	A4	A4
46	DEL	DEL	DEL	DEL	92	A5	A5	A5	A5

## ELECTRICAL DATA:

Input Power + 5 VDC @ 500 ma. max.  
 Data Output 8 Bit ASCII  
 (+ Logic, - Logic Optional)  
 Serial Output 1 Start Bit, 8 Data Bits,  
 1 Stop Bit  
 (+ Logic, 300 Baud)  
 Parallel Data Strobe Pulsed  
 (+ Logic)

## MECHANICAL DATA:

Key Total Travel 0.171 in.  
 (4.34 mm)  
 Key Actuating Force 2.0 oz  
 (57 gr.)  
 Keytop Color Ink Brown  
 (Cyclocac 82741)  
 Switch Reliability 100 Million MCBF

## CONNECTOR DETAIL:

### Serial Port:

PIN	FUNCTION
1	+ 5 VDC
2	Output
3	Ground
4	Chassis Ground
6	Input

### Parallel Port (Card-Edge/Header):

PIN	FUNCTION	PIN	FUNCTION
1/1	+ 5 VDC	A/2	Ground
3/4	B0	F/10	Clicker
4/5	B1	H/12	LED 1 & 2
5/6	B2	J/13	LED 3
6/7	B3	K/17	LED 4
7/11	B4	L/18	LED 5
8/14	B5	M/19	LED 6
9/15	B6	N/22	LED 7
10/16	B7	P/24	LED 8
14/25	Strobe	R/26	Chassis Ground

## RECOMMENDED CONNECTOR:

Serial Port: Amp 1-87175-3 or equiv.  
 Parallel Card-Edge: Amp 88373-4  
 (.100 in. centers) or equiv.  
 Parallel Header (Optional): Berg 65846-019  
 or equiv.

## ORDERING INFORMATION:

When ordering, refer to Key Tronic part number 65-02207-001. For pricing and availability, consult our nearest representative located in principal cities, worldwide.



Principal Cities Worldwide

P.O. BOX 14687 SPOKANE, WA 99214 USA  
 TELEPHONE 509-928-8000 TWX 510 773-1885

## SERIAL INPUT DATA:

Data Bit	Audible Data	LED Data
B 0	0	1
B 1	Short Beep (1)	LED 1 & 2 (complements)
B 2	Long Beep (1)	LED 3
B 3	Clicker Disable (1) or Clicker enable (0)	LED 4
B 4	N/A	LED 5
B 5	N/A	LED 6
B 6	N/A	LED 7
B 7	N/A	LED 8

